



Datasheet for ABIN2482748
anti-SLC1A1 antibody (AA 1-524) (Atto 488)



[Go to Product page](#)

3 Images

Overview

Quantity:	100 µg
Target:	SLC1A1
Binding Specificity:	AA 1-524
Reactivity:	Human
Host:	Mouse
Clonality:	Monoclonal
Conjugate:	This SLC1A1 antibody is conjugated to Atto 488
Application:	Western Blotting (WB), Immunoprecipitation (IP), Immunocytochemistry (ICC), Immunofluorescence (IF)

Product Details

Immunogen:	Fusion protein amino acids 1-524 (full length) of human EAAC1
Clone:	S180-41
Isotype:	IgG1
Specificity:	Detects ~60 kDa.
Cross-Reactivity:	Human, Rat
Purification:	Protein G Purified

Target Details

Target:	SLC1A1
---------	--------

Target Details

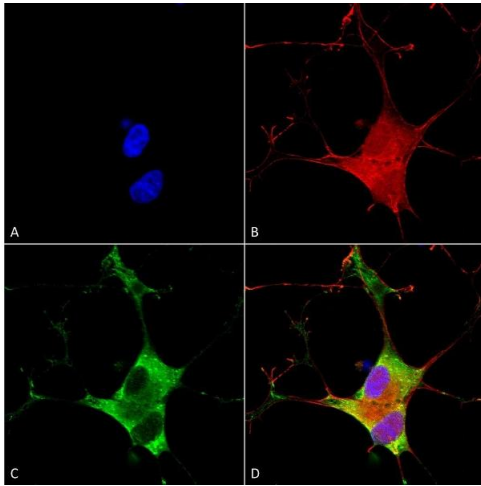
Alternative Name:	EAAT3 (SLC1A1 Products)
Background:	SLC1A1/EAAT3/EAAC1, a member of this transporter family, is expressed throughout the body, particularly in brain, intestine, liver, heart and kidney. Functional defects of the SLC1A1 gene are found in patients of dicarboxylicamino aciduria.
Gene ID:	6505
NCBI Accession:	NP_004161
UniProt:	P43005
Pathways:	Dicarboxylic Acid Transport

Application Details

Application Notes:	<ul style="list-style-type: none">• WB (1:1000)• ICC/IF (1:100)• optimal dilutions for assays should be determined by the user.
Comment:	5 µg of ABIN2482748 was sufficient for immunoprecipitation of EAAC1 from 50 µg of rat brain lysate.
Restrictions:	For Research Use only

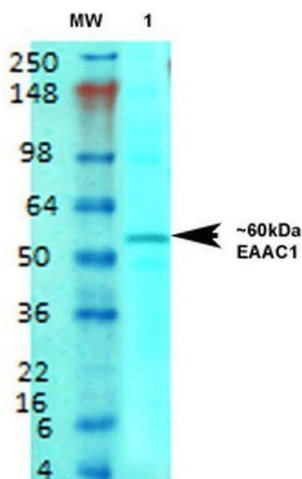
Handling

Format:	Liquid
Concentration:	1 mg/mL
Buffer:	PBS pH 7.4, 50 % glycerol, 0.09 % sodium azide, Storage buffer may change when conjugated
Preservative:	Sodium azide
Precaution of Use:	This product contains Sodium azide: a POISONOUS AND HAZARDOUS SUBSTANCE which should be handled by trained staff only.
Storage:	4 °C
Storage Comment:	Conjugated antibodies should be stored at 4°C



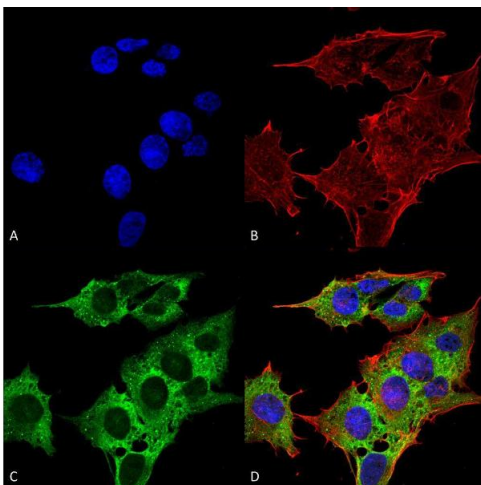
Immunocytochemistry

Image 1. Immunocytochemistry/Immunofluorescence analysis using Mouse Anti-EAAC1 Monoclonal Antibody, Clone S180-41 (ABIN2482748). Tissue: Neuroblastoma cells (SH-SY5Y). Species: Human. Fixation: 4 % PFA for 15 min. Primary Antibody: Mouse Anti-EAAC1 Monoclonal Antibody (ABIN2482748) at 1:100 for overnight at 4 °C with slow rocking. Secondary Antibody: AlexaFluor 488 at 1:1000 for 1 hour at RT. Counterstain: Phalloidin-iFluor 647 (red) F-Actin stain, Hoechst (blue) nuclear stain at 1:800, 1.6 mM for 20 min at RT. (A) Hoechst (blue) nuclear stain. (B) Phalloidin-iFluor 647 (red) F-Actin stain. (C) EAAC1 Antibody (D) Composite.



Western Blotting

Image 2. Western Blot analysis of Rat brain membrane lysate showing detection of EAAT3 protein using Mouse Anti-EAAT3 Monoclonal Antibody, Clone S180-41 . Primary Antibody: Mouse Anti-EAAT3 Monoclonal Antibody at 1:1000.



Immunofluorescence (fixed cells)

Image 3. Immunocytochemistry/Immunofluorescence analysis using Mouse Anti-EAAC1 Monoclonal Antibody, Clone S180-41 . Tissue: Neuroblastoma cell line (SK-N-BE). Species: Human. Fixation: 4% Formaldehyde for 15 min at RT. Primary Antibody: Mouse Anti-EAAC1 Monoclonal Antibody at 1:100 for 60 min at RT. Secondary Antibody: Goat Anti-Mouse ATTO 488 at 1:200 for 60 min at RT. Counterstain: Phalloidin Texas Red F-Actin stain; DAPI (blue) nuclear stain at 1:1000, 1:5000 for 60 min at RT, 5 min at RT. Localization: Cytoplasm, Membrane . Magnification:

60X.