

Datasheet for ABIN2483098

anti-SCN9A antibody (AA 1751-1946) (FITC)

5 Images

[Go to Product page](#)

Overview

| | |
|----------------------|------------------------------------------------------------------------------------------------------------------------------------------------------|
| Quantity: | 100 µg |
| Target: | SCN9A |
| Binding Specificity: | AA 1751-1946 |
| Reactivity: | Human |
| Host: | Mouse |
| Clonality: | Monoclonal |
| Conjugate: | This SCN9A antibody is conjugated to FITC |
| Application: | Immunohistochemistry (IHC), Western Blotting (WB), Immunofluorescence (IF), Immunoprecipitation (IP), Immunocytochemistry (ICC), Antibody Array (AA) |

Product Details

| | |
|-------------------|-------------------------------------------------------------------|
| Immunogen: | Fusion protein amino acids 1751-1946 (C-terminus) of human Nav1.7 |
| Clone: | N68-6 (Formerly S68-6) |
| Isotype: | IgG1 |
| Specificity: | Detects ~230 kDa. No cross-reactivity against other Nav channels. |
| Cross-Reactivity: | Hamster, Human, Mouse, Rat |
| Purification: | Protein G Purified |

Target Details

| | |
|---------|-------|
| Target: | SCN9A |
|---------|-------|

Target Details

| | |
|-------------------|------------------------------------------------------------------------------------------------------------------------------------------------------------------------------------------------------------------------------------------------------------------------------------------------------------------------------------------------------------------------------------------------------------------------------------------------------------------------------------------------------------------------------------------------------------------------------------------------------------------------------------------------------------------------------------------------------------|
| Alternative Name: | Nav1.7 (SCN9A Products) |
| Background: | Nav1.7 is a voltage-gated sodium channel and plays a critical role in the generation and conduction of action potentials and is thus important for electrical signaling by most excitable cells. Therapeutically, the association of pain insensitivity with the loss of function of a certain sodium channel may have implications. Since Nav1.7 is not present in cardiac muscle or neurons in the central nervous system, blockers of Nav1.7 will not have direct action on these cells and thus can have less side effects than current pain medications. By performing more studies, there is a possibility to develop a new generation of drugs that can reduce the pain intensity in animals (1-3). |
| Gene ID: | 6335 |
| NCBI Accession: | NP_002968 |
| UniProt: | Q15858 |

Application Details

| | |
|--------------------|--------------------------------------------------------------------------------------------------------------------------------------------------------------------------------------------------------------------------|
| Application Notes: | <ul style="list-style-type: none">• WB (1:1000)• IHC (1:1000)• ICC/IF (1:100)• optimal dilutions for assays should be determined by the user. |
| Comment: | 1 µg/ml of ABIN2483098 was sufficient for detection of Nav1.7 in 10 µg of HEK-293 cell lysate transiently expressing Nav1.7 by colorimetric immunoblot analysis using Goat anti-mouse IgG:HRP as the secondary antibody. |
| Restrictions: | For Research Use only |

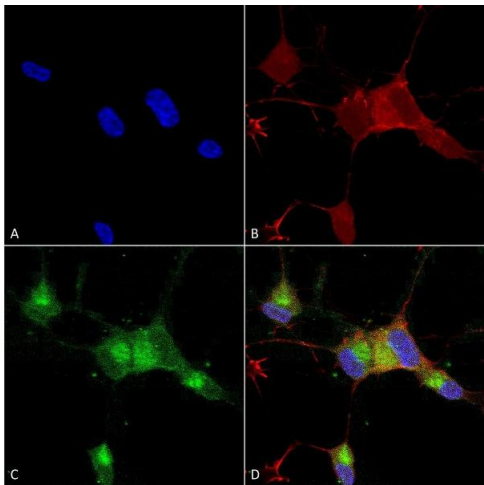
Handling

| | |
|--------------------|------------------------------------------------------------------------------------------------------------------------|
| Format: | Liquid |
| Concentration: | 1 mg/mL |
| Buffer: | PBS pH 7.4, 50 % glycerol, 0.09 % sodium azide, Storage buffer may change when conjugated |
| Preservative: | Sodium azide |
| Precaution of Use: | This product contains Sodium azide: a POISONOUS AND HAZARDOUS SUBSTANCE which should be handled by trained staff only. |
| Storage: | 4 °C |

Handling

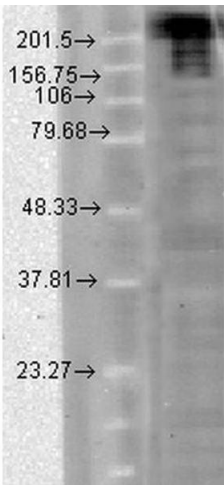
Storage Comment: Conjugated antibodies should be stored at 4°C

Images



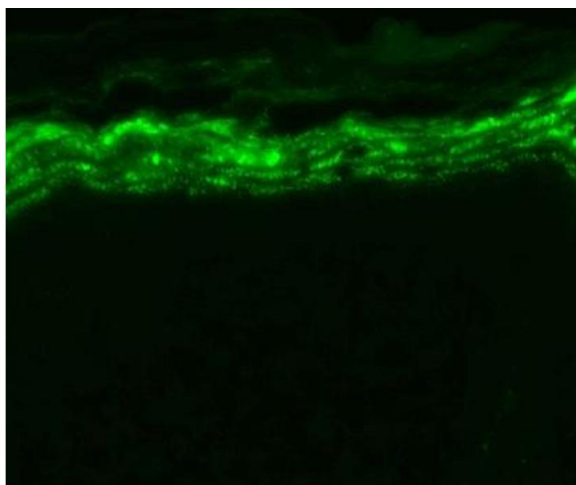
Immunocytochemistry

Image 1. Immunocytochemistry/Immunofluorescence analysis using Mouse Anti-Nav1.7 Monoclonal Antibody, Clone N68/6 (ABIN2483098). Tissue: Neuroblastoma cells (SH-SY5Y). Species: Human. Fixation: 4 % PFA for 15 min. Primary Antibody: Mouse Anti-Nav1.7 Monoclonal Antibody (ABIN2483098) at 1:100 for overnight at 4 °C with slow rocking. Secondary Antibody: AlexaFluor 488 at 1:1000 for 1 hour at RT. Counterstain: Phalloidin-iFluor 647 (red) F-Actin stain, Hoechst (blue) nuclear stain at 1:800, 1.6 mM for 20 min at RT. (A) Hoechst (blue) nuclear stain. (B) Phalloidin-iFluor 647 (red) F-Actin stain. (C) Nav1.7 Antibody (D) Composite.



Western Blotting

Image 2. Western Blot analysis of hamster CHO cells showing detection of Nav1.7 Sodium Channel protein using Mouse Anti-Nav1.7 Sodium Channel Monoclonal Antibody, Clone S68-6 . Load: 15 µg. Block: 1.5% BSA for 30 minutes at RT. Primary Antibody: Mouse Anti-Nav1.7 Sodium Channel Monoclonal Antibody at 1:1000 for 2 hours at RT. Secondary Antibody: Sheep Anti-Mouse IgG: HRP for 1 hour at RT.



Immunohistochemistry

Image 3. Immunohistochemistry analysis using Mouse Anti-Nav1.7 Sodium Channel Monoclonal Antibody, Clone S68-6 . Tissue: backskin. Species: Mouse. Fixation: Bouin's Fixative and paraffin-embedded. Primary Antibody: Mouse Anti-Nav1.7 Sodium Channel Monoclonal Antibody at 1:100 for 1 hour at RT. Secondary Antibody: FITC Goat Anti-Mouse (green) at 1:50 for 1 hour at RT.

Please check the [product details page](#) for more images. Overall 5 images are available for ABIN2483098.