



[Go to Product page](#)

Datasheet for ABIN2483189

anti-Notch1 antibody (AA 20-216) (Atto 390)

3 Images

Overview

Quantity:	100 µg
Target:	Notch1 (NOTCH1)
Binding Specificity:	AA 20-216
Reactivity:	Mouse
Host:	Mouse
Clonality:	Monoclonal
Conjugate:	This Notch1 antibody is conjugated to Atto 390
Application:	Western Blotting (WB), Immunofluorescence (IF), Immunocytochemistry (ICC)

Product Details

Immunogen:	Fusion protein amino acids 20-216 (extracellular N-terminus, EGF-like domains 1-5) of mouse Notch1
Clone:	S253-32
Isotype:	IgG1
Specificity:	Detects >270 kDa. Does not cross-react with Notch 2 or Notch3.
Cross-Reactivity:	Human, Mouse, Rat
Purification:	Protein G Purified

Target Details

Target:	Notch1 (NOTCH1)
---------	-----------------

Target Details

Alternative Name: Notch1 ([NOTCH1 Products](#))

Background: Notch is synthesized in the endoplasmic reticulum as an inactive form which is proteolytically cleaved by a furin-like convertase (S1 cleavage) in the trans-golgi network before it reaches the plasma membrane to yield an active, ligand-accessible form. Cleavage results in a C-terminal fragment N(TM) and a N-terminal fragment N(EC). Following ligand binding, it is cleaved (S2 cleavage) by TNF-alpha converting enzyme (TACE) to yield a membrane-associated intermediate fragment called Notch extracellular truncation (NEXT). This fragment is then cleaved by presenilin-dependent gamma-secretase (S3 cleavage) to release the intracellular domain (NICD) from the membrane.

Gene ID: 18128

NCBI Accession: [NP_032740](#)

UniProt: [Q01705](#)

Pathways: [Notch Signaling](#), [Stem Cell Maintenance](#), [Regulation of Muscle Cell Differentiation](#), [Tube Formation](#), [Skeletal Muscle Fiber Development](#)

Application Details

Application Notes:

- WB (1:1000)
- optimal dilutions for assays should be determined by the user.

Comment: 1 µg/ml of ABIN2483189 was sufficient for detection of Notch1 in 20 µg of rat brain membrane lysate and assayed by colorimetric immunoblot analysis using goat anti-mouse IgG:HRP as the secondary antibody.

Restrictions: For Research Use only

Handling

Format: Liquid

Concentration: 1 mg/mL

Buffer: PBS pH 7.4, 50 % glycerol, 0.09 % sodium azide, Storage buffer may change when conjugated

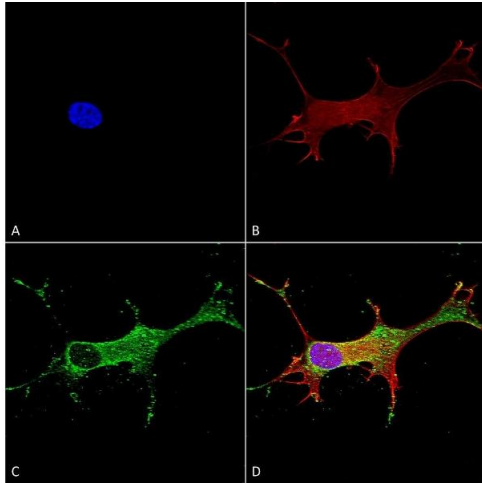
Preservative: Sodium azide

Precaution of Use: This product contains Sodium azide: a POISONOUS AND HAZARDOUS SUBSTANCE which should be handled by trained staff only.

Storage: 4 °C

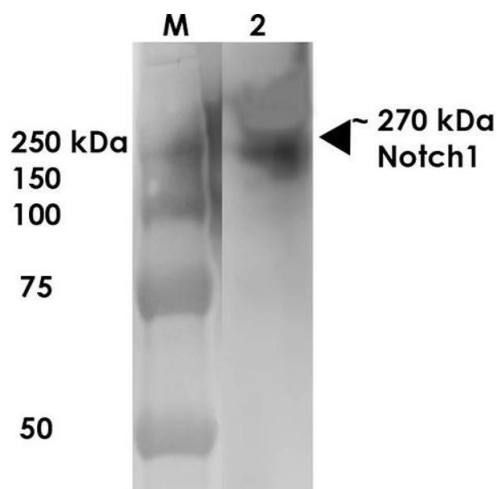
Storage Comment: Conjugated antibodies should be stored at 4°C

Images



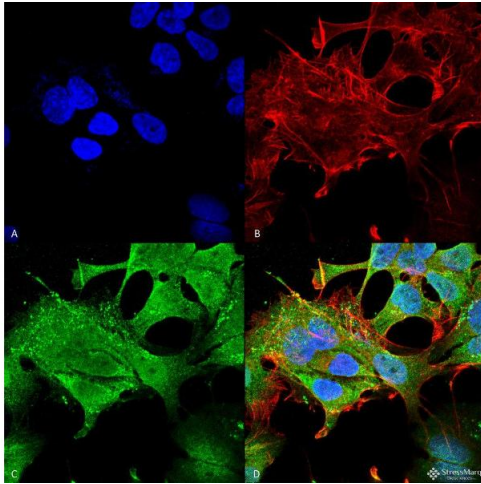
Immunocytochemistry

Image 1. Immunocytochemistry/Immunofluorescence analysis using Mouse Anti-Notch1 Monoclonal Antibody, Clone S253-32 (ABIN2483189). Tissue: Neuroblastoma cells (SH-SY5Y). Species: Human. Fixation: 4 % PFA for 15 min. Primary Antibody: Mouse Anti-Notch1 Monoclonal Antibody (ABIN2483189) at 1:50 for overnight at 4°C with slow rocking. Secondary Antibody: AlexaFluor 488 at 1:1000 for 1 hour at RT. Counterstain: Phalloidin-iFluor 647 (red) F-Actin stain, Hoechst (blue) nuclear stain at 1:800, 1.6 mM for 20 min at RT. (A) Hoechst (blue) nuclear stain. (B) Phalloidin-iFluor 647 (red) F-Actin stain. (C) Notch1 Antibody (D) Composite.



Western Blotting

Image 2. Western Blot analysis of Rat Brain Membrane showing detection of ~270 kDa Notch1 protein using Mouse Anti-Notch1 Monoclonal Antibody, Clone S253-32. Lane 1: MW Ladder. Lane 2: Rat Brain Membrane (10 µg). Load: 10 µg. Block: 5% milk. Primary Antibody: Mouse Anti-Notch1 Monoclonal Antibody at 1:1000 for 1 hour at RT. Secondary Antibody: Goat Anti-Mouse IgG: HRP at 1:200 for 1 hour at RT. Color Development: TMB solution for 10 min at RT. Predicted/Observed Size: ~270 kDa.



Immunofluorescence (fixed cells)

Image 3. Immunocytochemistry/Immunofluorescence analysis using Mouse Anti-Notch1 Monoclonal Antibody, Clone S253-32 . Tissue: Neuroblastoma cell line (SK-N-BE). Species: Human. Fixation: 4% Formaldehyde for 15 min at RT. Primary Antibody: Mouse Anti-Notch1 Monoclonal Antibody at 1:100 for 60 min at RT. Secondary Antibody: Goat Anti-Mouse ATTO 488 at 1:100 for 60 min at RT. Counterstain: Phalloidin Texas Red F-Actin stain; DAPI (blue) nuclear stain at 1:1000, 1:5000 for 60min RT, 5min RT. Localization: Cell Membrane, Nucleus. Magnification: 60X. (A) DAPI (blue) nuclear stain (B) Phalloidin Texas Red F-Actin stain (C) Notch1 Antibody (D) Composite.