

Datasheet for ABIN2483376  
**anti-LRP4 antibody (AA 26-350) (Atto 390)**[Go to Product page](#)

## 4 Images

## Overview

Quantity:	100 µg
Target:	LRP4
Binding Specificity:	AA 26-350
Reactivity:	Mouse
Host:	Mouse
Clonality:	Monoclonal
Conjugate:	This LRP4 antibody is conjugated to Atto 390
Application:	Western Blotting (WB), Immunocytochemistry (ICC), Immunofluorescence (IF)

## Product Details

Immunogen:	Fusion protein amino acids 26- 350 (extracellular N-terminus) of mouse LTP4
Clone:	S207-27
Isotype:	IgG2a
Specificity:	Detects the extracellular domain of LRP4 ~215 kDa. Degradation product can be seen at ~150 kDa.
Cross-Reactivity:	Human, Mouse, Rat
Purification:	Protein G Purified

## Target Details

Target:	LRP4
---------	------

## Target Details

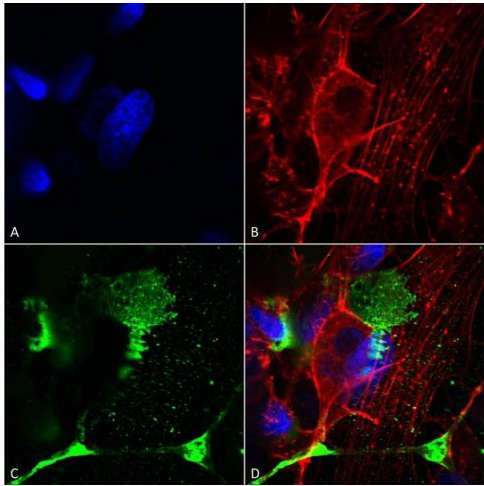
Alternative Name:	LRP4 ( <a href="#">LRP4 Products</a> )
Background:	Potential cell surface endocytic receptor, which binds and internalizes extracellular ligands for degradation by lysosomes. It is involved in the negative regulation of the canonical Wnt signaling pathway, being able to antagonize the LRP6-mediated activation of this pathway.
Gene ID:	83469
NCBI Accession:	<a href="#">NP_766256</a>
UniProt:	<a href="#">Q8VI56</a>
Pathways:	<a href="#">Skeletal Muscle Fiber Development</a>

## Application Details

Application Notes:	<ul style="list-style-type: none"><li>• WB (1:1000)</li><li>• ICC/IF (1:100)</li><li>• optimal dilutions for assays should be determined by the user.</li></ul>
Comment:	1 µg/ml of ABIN2483376 was sufficient for detection of LRP4 in 20 µg of rat brain lysate by colorimetric immunoblot analysis using Goat anti-mouse IgG:HRP as the secondary antibody.
Restrictions:	For Research Use only

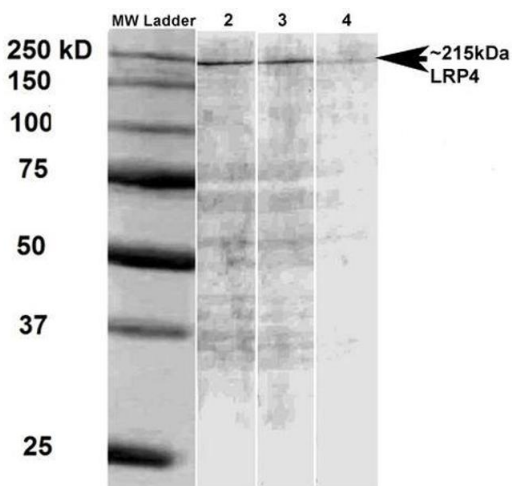
## Handling

Format:	Liquid
Concentration:	1 mg/mL
Buffer:	PBS pH 7.4, 50 % glycerol, 0.09 % sodium azide, Storage buffer may change when conjugated
Preservative:	Sodium azide
Precaution of Use:	This product contains Sodium azide: a POISONOUS AND HAZARDOUS SUBSTANCE which should be handled by trained staff only.
Storage:	4 °C
Storage Comment:	Conjugated antibodies should be stored at 4°C



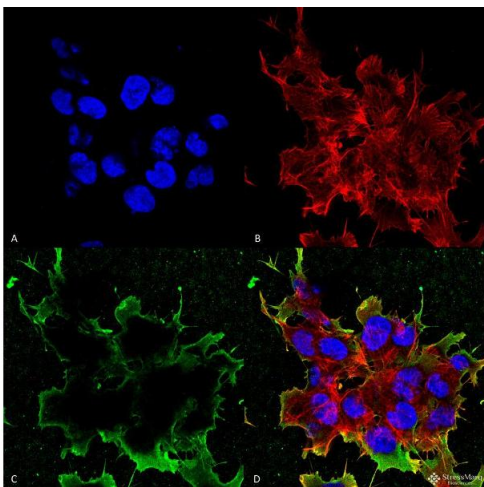
### Immunocytochemistry

**Image 1.** Immunocytochemistry/Immunofluorescence analysis using Mouse Anti-LRP4 (Extracellular) Monoclonal Antibody, Clone S207-27 (ABIN2483376). Tissue: Neuroblastoma cells (SH-SY5Y). Species: Human. Fixation: 4 % PFA for 15 min. Primary Antibody: Mouse Anti-LRP4 (Extracellular) Monoclonal Antibody (ABIN2483376) at 1:200 for overnight at 4 °C with slow rocking. Secondary Antibody: AlexaFluor 488 at 1:1000 for 1 hour at RT. Counterstain: Phalloidin-iFluor 647 (red) F-Actin stain, Hoechst (blue) nuclear stain at 1:800, 1.6 mM for 20 min at RT. (A) Hoechst (blue) nuclear stain. (B) Phalloidin-iFluor 647 (red) F-Actin stain. (C) LRP4 (Extracellular) Antibody (D) Composite.



### Western Blotting

**Image 2.** Western Blot analysis of Rat brain membrane lysate showing detection of LRP4 protein using Mouse Anti-LRP4 Monoclonal Antibody, Clone S207-27 . Primary Antibody: Mouse Anti-LRP4 Monoclonal Antibody at 1:500, 1:1000, and 1:2000.



### Immunofluorescence (fixed cells)

**Image 3.** Immunocytochemistry/Immunofluorescence analysis using Mouse Anti-LRP4 (Extracellular) Monoclonal Antibody, Clone S207-27 . Tissue: Neuroblastoma cell line (SK-N-BE). Species: Human. Fixation: 4% Formaldehyde for 15 min at RT. Primary Antibody: Mouse Anti-LRP4 (Extracellular) Monoclonal Antibody at 1:100 for 60 min at RT. Secondary Antibody: Goat Anti-Mouse ATTO 488 at 1:100 for 60 min at RT. Counterstain: Phalloidin Texas Red F-Actin stain; DAPI (blue) nuclear stain at 1:1000, 1:5000 for 60min RT, 5min RT. Localization: Membrane. Magnification:

60X. (A) DAPI (blue) nuclear stain (B) Phalloidin Texas Red F-Actin stain (C) LRP4 (Extracellular) Antibody (D) Composite.

Please check the [product details page](#) for more images. Overall 4 images are available for ABIN2483376.