

Datasheet for ABIN2484071

anti-CACNA1D antibody (AA 859-875) (PE)[Go to Product page](#)**3** Images

Overview

| | |
|----------------------|---|
| Quantity: | 100 µg |
| Target: | CACNA1D |
| Binding Specificity: | AA 859-875 |
| Reactivity: | Rat |
| Host: | Mouse |
| Clonality: | Monoclonal |
| Conjugate: | This CACNA1D antibody is conjugated to PE |
| Application: | Immunohistochemistry (IHC), Western Blotting (WB), Immunoprecipitation (IP), Immunofluorescence (IF), Immunocytochemistry (ICC), Antibody Array (AA) |

Product Details

| | |
|-------------------|---|
| Immunogen: | Fusion protein amino acids 859-875 of rat Cav1.3 |
| Clone: | S48 |
| Isotype: | IgG2a kappa |
| Specificity: | Detects ~250 kDa. No cross-reactivity against Cav1.2. |
| Cross-Reactivity: | Human, Mouse, Rat |
| Purification: | Protein G Purified |

Target Details

| | |
|---------|---------|
| Target: | CACNA1D |
|---------|---------|

Target Details

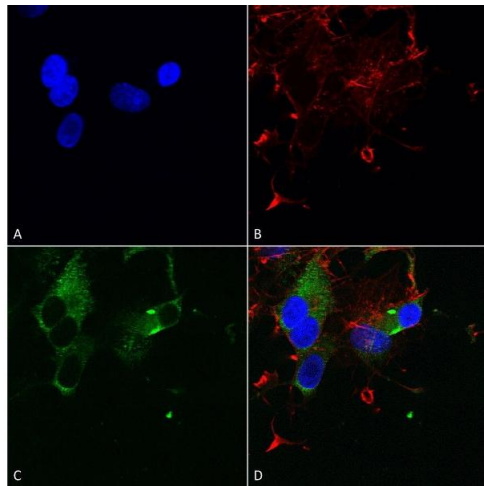
| | |
|-------------------|--|
| Alternative Name: | Cav1.3 (CACNA1D Products) |
| Background: | CaV1.3, also known as the calcium channel, voltage-dependent, L type, alpha 1D subunit (CACNA1D), is a human gene. CaV1.3 subunits are primarily expressed in neurons and neuroendocrine cells. Some studies suggest however that CaV1.3 is also found in the atria, and may figure prominently in atrial arrhythmias (1). CaV1.3 also carries the primary sensory receptors of the mammalian cochlea, and are also expressed in the electromotile outer hair cells (2). |
| Gene ID: | 29716 |
| NCBI Accession: | NP_058994 |
| UniProt: | P27732 |
| Pathways: | Sensory Perception of Sound |

Application Details

| | |
|--------------------|---|
| Application Notes: | <ul style="list-style-type: none">• WB (1:1000)• IHC (1:1000)• ICC/IF (1:100)• optimal dilutions for assays should be determined by the user. |
| Comment: | 1 µg/ml of ABIN2484071 was sufficient for detection of Cav1.3 in 10 µg of rat brain lysate by colorimetric immunoblot analysis using Goat anti-mouse IgG:HRP as the secondary antibody. |
| Restrictions: | For Research Use only |

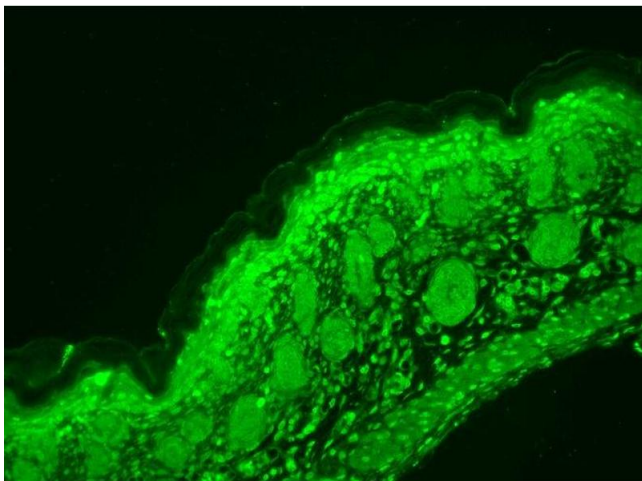
Handling

| | |
|--------------------|--|
| Format: | Liquid |
| Concentration: | 1 mg/mL |
| Buffer: | PBS pH 7.4, 50 % glycerol, 0.09 % sodium azide, Storage buffer may change when conjugated |
| Preservative: | Sodium azide |
| Precaution of Use: | This product contains Sodium azide: a POISONOUS AND HAZARDOUS SUBSTANCE which should be handled by trained staff only. |
| Storage: | 4 °C |
| Storage Comment: | Conjugated antibodies should be stored at 4°C |



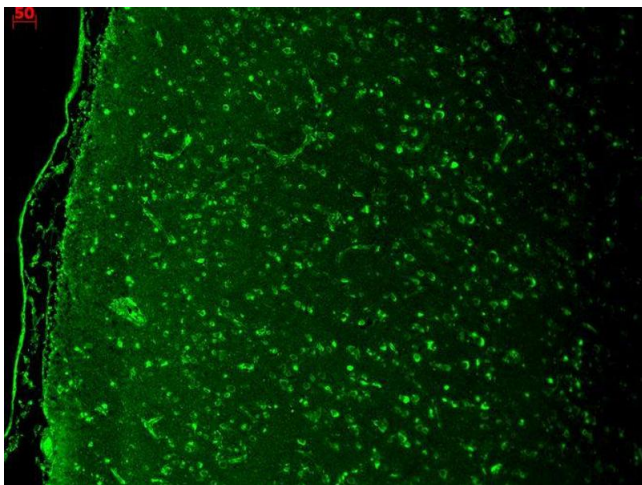
Immunocytochemistry

Image 1. Immunocytochemistry/Immunofluorescence analysis using Mouse Anti-Cav1.3 Monoclonal Antibody, Clone S48 (ABIN2484071). Tissue: Neuroblastoma cells (SH-SY5Y). Species: Human. Fixation: 4 % PFA for 15 min. Primary Antibody: Mouse Anti-Cav1.3 Monoclonal Antibody (ABIN2484071) at 1:50 for overnight at 4 °C with slow rocking. Secondary Antibody: AlexaFluor 488 at 1:1000 for 1 hour at RT. Counterstain: Phalloidin-iFluor 647 (red) F-Actin stain, Hoechst (blue) nuclear stain at 1:800, 1.6 mM for 20 min at RT. (A) Hoechst (blue) nuclear stain. (B) Phalloidin-iFluor 647 (red) F-Actin stain. (C) Cav1.3 Antibody (D) Composite.



Immunohistochemistry

Image 2. Immunohistochemistry analysis using Mouse Anti-CaV1.3 Calcium Channel Monoclonal Antibody, Clone S48A-9 . Tissue: backskin. Species: Mouse. Fixation: Bouin's Fixative and paraffin-embedded. Primary Antibody: Mouse Anti-CaV1.3 Calcium Channel Monoclonal Antibody at 1:100 for 1 hour at RT. Secondary Antibody: FITC Goat Anti-Mouse (green) at 1:50 for 1 hour at RT.



Immunohistochemistry

Image 3. Immunohistochemistry analysis using Mouse Anti-CaV1.3 Calcium Channel Monoclonal Antibody, Clone S48A-9 . Tissue: hippocampus. Species: Human. Fixation: Bouin's Fixative and paraffin-embedded. Primary Antibody: Mouse Anti-CaV1.3 Calcium Channel Monoclonal Antibody at 1:1000 for 1 hour at RT. Secondary Antibody: FITC Goat Anti-Mouse (green) at 1:50 for 1 hour at RT.