

Datasheet for ABIN2484302

anti-HMOX1 antibody (AA 1-30) (Alkaline Phosphatase (AP))[Go to Product page](#)

5 Images

Overview

| | |
|----------------------|--|
| Quantity: | 100 µg |
| Target: | HMOX1 |
| Binding Specificity: | AA 1-30 |
| Reactivity: | Human |
| Host: | Mouse |
| Clonality: | Monoclonal |
| Conjugate: | This HMOX1 antibody is conjugated to Alkaline Phosphatase (AP) |
| Application: | Western Blotting (WB), Immunohistochemistry (IHC), Immunoprecipitation (IP), ELISA, Immunocytochemistry (ICC), Immunofluorescence (IF) |

Product Details

| | |
|-------------------|---|
| Immunogen: | Human HO-1 synthetic peptide, amino acids 1-30 |
| Clone: | 1F12-A6 |
| Isotype: | IgG1 kappa |
| Specificity: | Detects 32 kDa. Does not cross-react with HO-2. |
| Cross-Reactivity: | Cow, Dog, Guinea Pig, Hamster, Human, Monkey, Mouse, Pig, Rabbit, Rat |
| Purification: | Protein G Purified |

Target Details

| | |
|---------|-------|
| Target: | HMOX1 |
|---------|-------|

Target Details

Alternative Name: HO-1 ([HMOX1 Products](#))

Background: Heme-oxygenase is a ubiquitous enzyme that catalyzes the initial and rate-limiting steps in heme catabolism yielding equimolar amounts of biliverdin, iron and carbon monoxide. Biliverdin is subsequently converted to bilirubin and the free iron is sequestered to ferritin (1). These products have important physiological effects as carbon monoxide is a potent vasodilator, biliverdin and bilirubin are potent antioxidants, and the free iron increases oxidative stress and regulates the expression of many mRNAs (2). There are three isoforms of heme-oxygenase, HO-1, HO-2 and HO-3, however HO-1 and HO-2 are the major isoforms as they both have been identified in mammals (3). HO-1, also known as heat shock protein 32, is an inducible isoform activated by most oxidative stress inducers, cytokines, inflammatory agents and heat shock. HO-2 is a constitutive isoform which is expressed under homeostatic conditions. HO-1 is also considered to be a cytoprotective factor in that free heme is highly reactive and cytotoxic, and secondly, carbon monoxide is a mediator inhibiting the inflammatory process and bilirubin is a scavenger for reactive oxygen, both of which are the end products of heme catalyzation (4). It has also been shown that HO-1 deficiency may cause reduced stress defense, a pro-inflammatory tendency (5), susceptibility to atherosclerotic lesion formation (6), endothelial cell injury, and growth retardation (7). Up-regulation of HO-1 is therefore said to be one of the major defense mechanisms of oxidative stress (4).

Gene ID: 3162

NCBI Accession: [NP_002124](#)

UniProt: [P09601](#)

Pathways: [Transition Metal Ion Homeostasis](#), [Regulation of Leukocyte Mediated Immunity](#), [Positive Regulation of Immune Effector Process](#), [Production of Molecular Mediator of Immune Response](#), [SARS-CoV-2 Protein Interactome](#)

Application Details

Application Notes:

- WB (1:1000)
- IHC (1:100)
- ICC/IF (1:100)
- optimal dilutions for assays should be determined by the user.

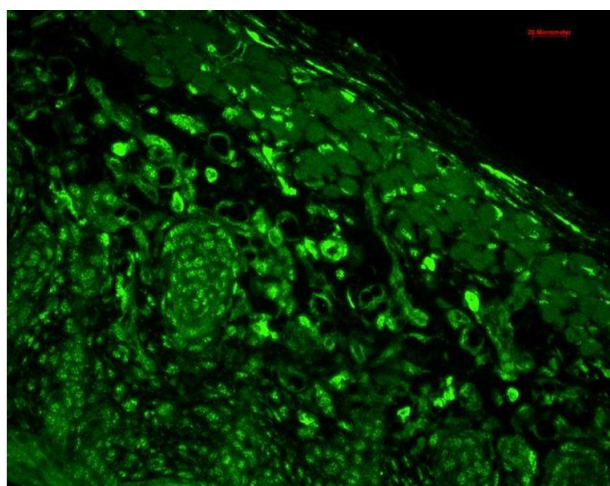
Comment: 1 µg/ml was sufficient for detection of HO-1 in 10 µg of mixed human cell line lysate by colorimetric immunoblot analysis using Goat Anti-Mouse IgG:HRP as the secondary.

Restrictions: For Research Use only

Handling

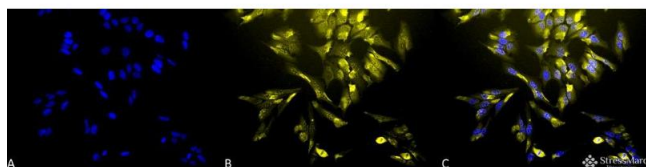
| | |
|--------------------|--|
| Format: | Liquid |
| Concentration: | 1 mg/mL |
| Buffer: | PBS pH 7.4, 50 % glycerol, 0.09 % sodium azide, Storage buffer may change when conjugated |
| Preservative: | Sodium azide |
| Precaution of Use: | This product contains Sodium azide: a POISONOUS AND HAZARDOUS SUBSTANCE which should be handled by trained staff only. |
| Storage: | 4 °C |
| Storage Comment: | Conjugated antibodies should be stored at 4°C |

Images



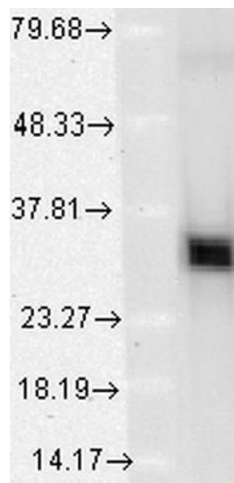
Immunohistochemistry

Image 1. Immunohistochemistry analysis using Mouse Anti-HO-1 Monoclonal Antibody, Clone 1F12-A6 . Tissue: backskin. Species: Mouse. Fixation: Bouin's Fixative and paraffin-embedded. Primary Antibody: Mouse Anti-HO-1 Monoclonal Antibody at 1:100 for 1 hour at RT. Secondary Antibody: FITC Goat Anti-Mouse (green) at 1:50 for 1 hour at RT. Localization: muscle, dermis, hair follicles, epidermis: nuclear everywhere and some cytoplasmic staining.



Immunofluorescence (fixed cells)

Image 2. Immunocytochemistry/Immunofluorescence analysis using Mouse Anti-HO-1 Monoclonal Antibody, Clone 1F12-A6 . Tissue: HeLa Cells. Species: Human. Fixation: 2% Formaldehyde for 20 min at RT. Primary Antibody: Mouse Anti-HO-1 Monoclonal Antibody at 1:100 for 12 hours at 4°C. Secondary Antibody: R-PE Goat Anti-Mouse (yellow) at 1:200 for 2 hours at RT. Counterstain: DAPI (blue) nuclear stain at 1:40000 for 2 hours at RT. Localization: Microsome. Endoplasmic reticulum. Localizes to the nucleus upon hypoxia. Magnification: 20x. (A) DAPI (blue) nuclear stain. (B) Anti-HO-1 Antibody. (C) Composite.



Western Blotting

Image 3. Western Blot analysis of Human HeLa cell lysates showing detection of HO-1 protein using Mouse Anti-HO-1 Monoclonal Antibody, Clone 1F12-A6 . Load: 15 µg. Block: 1.5% BSA for 30 minutes at RT. Primary Antibody: Mouse Anti-HO-1 Monoclonal Antibody at 1:1000 for 2 hours at RT. Secondary Antibody: Sheep Anti-Mouse IgG: HRP for 1 hour at RT.

Please check the [product details page](#) for more images. Overall 5 images are available for ABIN2484302.