



Datasheet for ABIN2484438

anti-SLC5A5 antibody (AA 468-643) (Alkaline Phosphatase (AP))



[Go to Product page](#)

5 Images

Overview

Quantity:	100 µg
Target:	SLC5A5
Binding Specificity:	AA 468-643
Reactivity:	Human
Host:	Mouse
Clonality:	Monoclonal
Conjugate:	This SLC5A5 antibody is conjugated to Alkaline Phosphatase (AP)
Application:	Western Blotting (WB), Immunohistochemistry (IHC), Antibody Array (AA)

Product Details

Immunogen:	Mannose binding protein hNIS fusion (AA468-643)
Clone:	14F
Isotype:	IgG1
Specificity:	Detects ~97 kDa, non-glycosylated version at 68 kDa. Other minor bands associated with hNIS at 160 kDa, and degradation products at ~30 kDa, and ~15 kDa.
Cross-Reactivity:	Human, Mouse, Rat
Purification:	Protein G Purified

Target Details

Target:	SLC5A5
---------	--------

Target Details

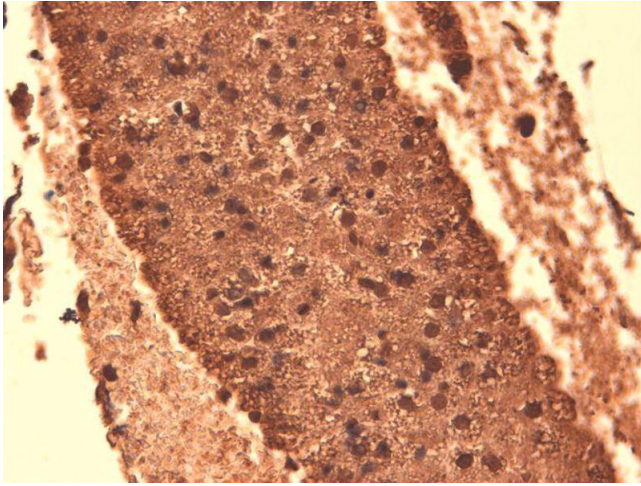
Alternative Name:	Sodium Iodide Symporter (SLC5A5 Products)
Background:	The sodium iodide symporter (NIS) is an ion pump that actively transports iodide across the basolateral membrane into thyroid epithelial cells (1, 2). This is important step in the process of iodide organification and the formation of triiodothyronine and thyroxine (3).
Gene ID:	6528
NCBI Accession:	NP_000444
UniProt:	Q92911

Application Details

Application Notes:	<ul style="list-style-type: none">• WB (1:1000)• IHC (1:1000)• optimal dilutions for assays should be determined by the user.
Comment:	1 µg/ml of ABIN2484438 was sufficient for detection of hNIS in 20 µg of transfected COS-7 cell membrane lysate by ECL immunoblot analysis using Goat anti-mouse IgG:HRP as the secondary antibody.
Restrictions:	For Research Use only

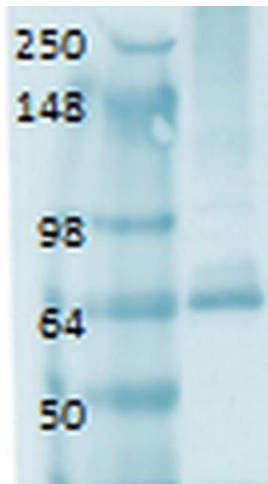
Handling

Format:	Liquid
Concentration:	1 mg/mL
Buffer:	PBS pH 7.4, 50 % glycerol, 0.09 % sodium azide, Storage buffer may change when conjugated
Preservative:	Sodium azide
Precaution of Use:	This product contains Sodium azide: a POISONOUS AND HAZARDOUS SUBSTANCE which should be handled by trained staff only.
Storage:	4 °C
Storage Comment:	Conjugated antibodies should be stored at 4°C



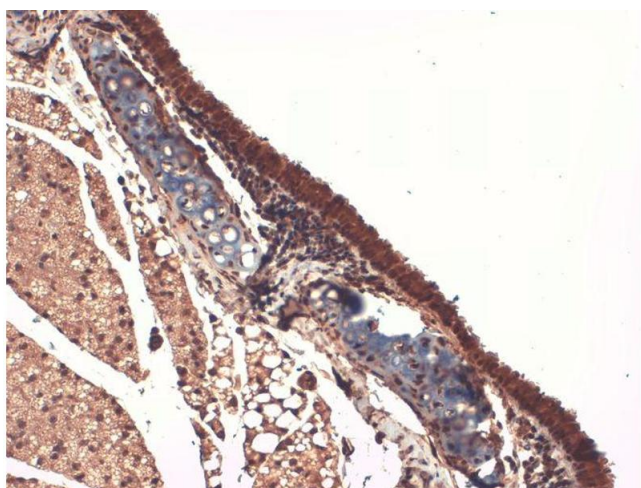
Immunohistochemistry

Image 1. Immunohistochemistry analysis using Mouse Anti-Sodium Iodide Symporter Monoclonal Antibody, Clone 14F . Tissue: Thyroid. Species: Mouse. Fixation: 10% Formalin Solution for 12-24 hours at RT. Primary Antibody: Mouse Anti-Sodium Iodide Symporter Monoclonal Antibody at 1:1000 for 1 hour at RT. Secondary Antibody: HRP/DAB Detection System: Biotinylated Goat Anti-Mouse, Streptavidin Peroxidase, DAB Chromogen (brown) for 30 minutes at RT. Counterstain: Mayer Hematoxylin (purple/blue) nuclear stain at 250-500 µl for 5 minutes at RT.



Western Blotting

Image 2. Western Blot analysis of Human thyroid lysate showing detection of Sodium Iodide Symporter protein using Mouse Anti-Sodium Iodide Symporter Monoclonal Antibody, Clone 14F . Primary Antibody: Mouse Anti-Sodium Iodide Symporter Monoclonal Antibody at 1:1000.



Immunohistochemistry

Image 3. Immunohistochemistry analysis using Mouse Anti-Sodium Iodide Symporter Monoclonal Antibody, Clone 14F . Tissue: Trachea. Species: Mouse. Fixation: 10% Formalin Solution for 12-24 hours at RT. Primary Antibody: Mouse Anti-Sodium Iodide Symporter Monoclonal Antibody at 1:1000 for 1 hour at RT. Secondary Antibody: HRP/DAB Detection System: Biotinylated Goat Anti-Mouse, Streptavidin Peroxidase, DAB Chromogen (brown) for 30 minutes at RT. Counterstain: Mayer Hematoxylin (purple/blue) nuclear stain at 250-500 µl for 5 minutes at RT.

Images

Please check the [product details page](#) for more images. Overall 5 images are available for ABIN2484438.