

Datasheet for ABIN2484529
anti-CDC37 antibody (PerCP)[Go to Product page](#)

3 Images

Overview

Quantity:	100 µg
Target:	CDC37
Reactivity:	Human
Host:	Rabbit
Clonality:	Polyclonal
Conjugate:	This CDC37 antibody is conjugated to PerCP
Application:	Western Blotting (WB), Immunofluorescence (IF), Immunocytochemistry (ICC)

Product Details

Immunogen:	Native human Cdc37, full length
Specificity:	Detects ~44.5 kDa.
Cross-Reactivity:	Human
Purification:	Protein A Purified

Target Details

Target:	CDC37
Alternative Name:	CDC37 (CDC37 Products)
Background:	HSP90 co-chaperone Cdc37 is a protein that is encoded by the CDC37 gene. It has been found to form complexes with HSP90 and a variety of protein kinases including CDK4, CDK6, SRC, RAF1, MOK and eIF-2 alpha kinases. It is thought to play a critical role in directing HSP90 to its target kinases (1, 2). CDC37 is necessary for maintaining prostate tumor cell growth and

Target Details

represents a novel target in the exploration for multi-targeted therapies (3, 4).

Gene ID: 11140

NCBI Accession: [NP_008996](#)

UniProt: [Q16543](#)

Application Details

Application Notes:

- WB (1:2000)
- ICC/IF (1:200)
- optimal dilutions for assays should be determined by the user.

Comment: A 1:2000 dilution of ABIN2484529 was sufficient for detection of cdc37 in 20 µg of HeLa cell lysate by ECL immunoblot analysis.

Restrictions: For Research Use only

Handling

Format: Liquid

Concentration: 1.68 mg/mL

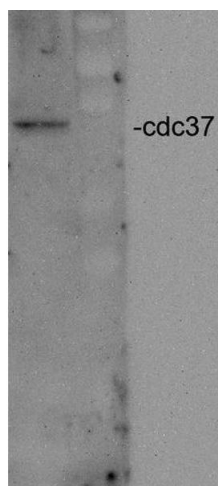
Buffer: PBS pH 7.4, 50 % glycerol, 0.09 % sodium azide, Storage buffer may change when conjugated

Preservative: Sodium azide

Precaution of Use: This product contains Sodium azide: a POISONOUS AND HAZARDOUS SUBSTANCE which should be handled by trained staff only.

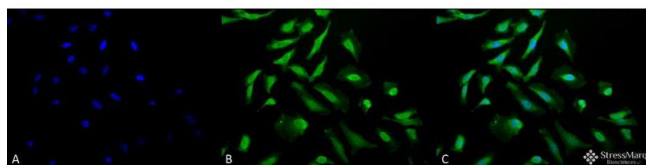
Storage: 4 °C

Storage Comment: Conjugated antibodies should be stored at 4°C



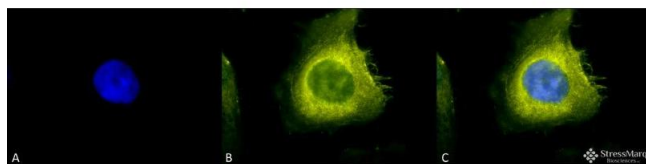
Western Blotting

Image 1. Western blot analysis of Human HeLa cell lysates showing detection of CDC37 protein using Rabbit Anti-CDC37 Polyclonal Antibody . Primary Antibody: Rabbit Anti-CDC37 Polyclonal Antibody at 1:2000.



Immunofluorescence (fixed cells)

Image 2. Immunocytochemistry/Immunofluorescence analysis using Rabbit Anti-CDC37 Polyclonal Antibody . Tissue: Heat Shocked HeLa Cells. Species: Human. Fixation: 2% Formaldehyde for 20 min at RT. Primary Antibody: Rabbit Anti-CDC37 Polyclonal Antibody at 1:200 for 12 hours at 4°C. Secondary Antibody: FITC Goat Anti-Rabbit (green) at 1:200 for 2 hours at RT. Counterstain: DAPI (blue) nuclear stain at 1:40000 for 2 hours at RT. Localization: Cytoplasm. Magnification: 20x. (A) DAPI (blue) nuclear stain. (B) Anti-CDC37 Antibody. (C) Composite. Heat Shocked at 42°C for 30 min.



Immunofluorescence (fixed cells)

Image 3. Immunocytochemistry/Immunofluorescence analysis using Rabbit Anti-CDC37 Polyclonal Antibody . Tissue: Heat Shocked HeLa Cells. Species: Human. Fixation: 2% Formaldehyde for 20 min at RT. Primary Antibody: Rabbit Anti-CDC37 Polyclonal Antibody at 1:200 for 12 hours at 4°C. Secondary Antibody: R-PE Goat Anti-Rabbit (yellow) at 1:200 for 2 hours at RT. Counterstain: DAPI (blue) nuclear stain at 1:40000 for 2 hours at RT. Localization: Cytoplasm. Magnification: 100x. (A) DAPI (blue) nuclear stain. (B) Anti-CDC37 Antibody. (C) Composite. Heat Shocked at 42°C for 30 min.