

Datasheet for ABIN2484549

**anti-CAMKII gamma antibody (Atto 390)**

## 5 Images

[Go to Product page](#)

## Overview

Quantity:	100 µg
Target:	CAMKII gamma (CAMK2G)
Reactivity:	Rat
Host:	Mouse
Clonality:	Monoclonal
Conjugate:	This CAMKII gamma antibody is conjugated to Atto 390
Application:	Western Blotting (WB), Immunohistochemistry (IHC), ELISA, Immunoprecipitation (IP), Immunofluorescence (IF), Immunocytochemistry (ICC), Radioimmunoassay (RIA)

## Product Details

Immunogen:	Partially purified rat CaMKII
Clone:	6G9
Isotype:	IgG1
Specificity:	Detects ~50-60 kDa. Recognizes both phosphorylated and non-phosphorylated forms.
Cross-Reactivity:	Cow, Human, Mouse, Rat
Purification:	Protein G Purified

## Target Details

Target:	CAMKII gamma (CAMK2G)
Alternative Name:	CaMKII ( <a href="#">CAMK2G Products</a> )

## Target Details

Background:	<p>CaMKII is an important member of the calcium/calmodulin-activated protein kinase family, functioning in neural synaptic stimulation and T-cell receptor signaling (1, 2). CaMKII is expressed in many different tissues but is specifically found in the neurons of the forebrain and its mRNA is found within the dendrites and the soma of the neuron. The CaMKII that is found in the neurons consist of two subunits of 52 (termed alpha genes) and 60 kDa (beta genes). CaMKII has catalytic and regulatory domains, as well as an ATP-binding domain, and a consensus phosphorylation site (3-7). The binding of Ca<sup>2+</sup>/calmodulin to its regulatory domain releases its auto inhibitory effect and activates the kinase (8). This kinase activation results in autophosphorylation at threonine 286 (8). The threonine phosphorylation state of CaMKII can be regulated through PP1/PKA. Whereas PP1 (protein phosphatase 1) dephosphorylates phospho-CaMKII at Thr286, PKA (protein kinase A) prevents this dephosphorylation (9). Autophosphorylation also enables CaMKII to attain an enhanced affinity for NMDA receptors in postsynaptic densities (10-12).</p>
Gene ID:	12322
NCBI Accession:	<a href="#">NP_033922</a>
UniProt:	<a href="#">P11798</a>
Pathways:	<a href="#">WNT Signaling</a> , <a href="#">Interferon-gamma Pathway</a> , <a href="#">Hormone Transport</a> , <a href="#">Myometrial Relaxation and Contraction</a> , <a href="#">Regulation of long-term Neuronal Synaptic Plasticity</a>

## Application Details

Application Notes:	<ul style="list-style-type: none"><li>• WB (1:10000)</li><li>• IHC (1:2000)</li><li>• ICC/IF (1:50)</li><li>• optimal dilutions for assays should be determined by the user.</li></ul>
Comment:	0.1 µg/ml was sufficient for detection of CamKII in 20 µg rat brain tissue extract by colorimetric immunoblot analysis using Goat Anti-Mouse IgG:AP as the secondary.
Restrictions:	For Research Use only

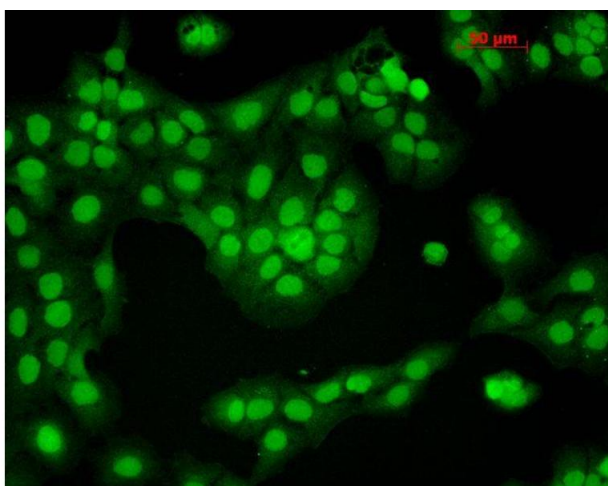
## Handling

Format:	Liquid
Concentration:	1 mg/mL
Buffer:	PBS pH 7.4, 50 % glycerol, 0.09 % sodium azide, Storage buffer may change when conjugated

## Handling

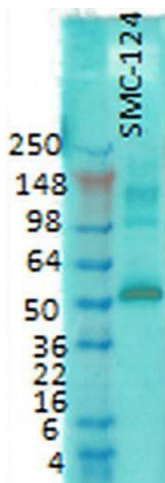
Preservative:	Sodium azide
Precaution of Use:	This product contains Sodium azide: a POISONOUS AND HAZARDOUS SUBSTANCE which should be handled by trained staff only.
Storage:	4 °C
Storage Comment:	Conjugated antibodies should be stored at 4°C

## Validation report #103875 for Immunofluorescence (IF)



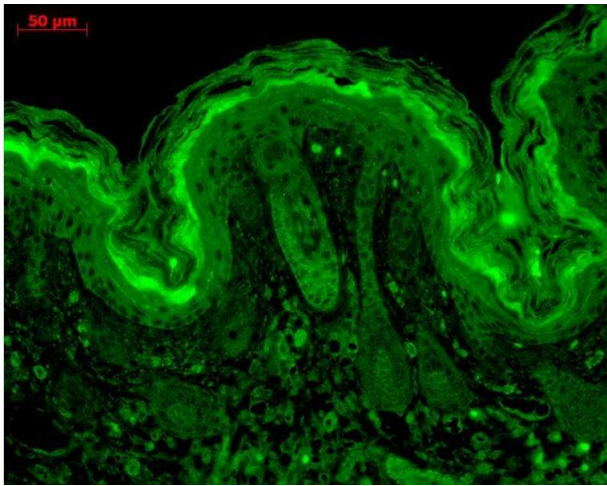
### Immunofluorescence (fixed cells)

**Image 1.** Immunocytochemistry/Immunofluorescence analysis using Mouse Anti-CaMKII Monoclonal Antibody, Clone 6G9 . Tissue: HaCaT cells. Species: Human. Fixation: Cold 100% methanol for 10 minutes at -20°C. Primary Antibody: Mouse Anti-CaMKII Monoclonal Antibody at 1:100 for 1 hour at RT. Secondary Antibody: FITC Goat Anti-Mouse (green) at 1:50 for 1 hour at RT. Localization: Nuclear Staining.



### Western Blotting

**Image 2.** Western Blot analysis of Rat brain membrane lysate showing detection of CaMKII protein using Mouse Anti-CaMKII Monoclonal Antibody, Clone 6G9 . Primary Antibody: Mouse Anti-CaMKII Monoclonal Antibody at 1:1000.



### Immunohistochemistry

**Image 3.** Immunohistochemistry analysis using Mouse Anti-CaMKII Monoclonal Antibody, Clone 6G9 . Tissue: backskin. Species: Mouse. Fixation: Bouin's Fixative and paraffin-embedded. Primary Antibody: Mouse Anti-CaMKII Monoclonal Antibody at 1:100 for 1 hour at RT. Secondary Antibody: FITC Goat Anti-Mouse (green) at 1:50 for 1 hour at RT. Localization: Hair follicles, epidermis.

Please check the [product details page](#) for more images. Overall 5 images are available for ABIN2484549.