

Datasheet for ABIN2484680
anti-TRAP1 antibody (FITC)



[Go to Product page](#)

2 Images

Overview

Quantity:	100 µg
Target:	TRAP1
Reactivity:	Human
Host:	Mouse
Clonality:	Monoclonal
Conjugate:	This TRAP1 antibody is conjugated to FITC
Application:	Western Blotting (WB), Immunofluorescence (IF), Immunocytochemistry (ICC)

Product Details

Immunogen:	Purified recombinant TRAP1
Clone:	3H4-2H6
Isotype:	IgG1 kappa
Specificity:	Detects ~75 kDa.
Cross-Reactivity:	Human, Mouse, Rat
Purification:	Protein G Purified

Target Details

Target:	TRAP1
Alternative Name:	TRAP1 (TRAP1 Products)
Background:	The 90 kDa heat shock protein (HSP90) family of proteins that play an important physiological

Target Details

role. HSP90 is involved in numerous cellular processes but is best known for its association with signal transduction machinery. A recently cloned homolog of HSP90 is the tumor necrosis factor receptor-associated protein (TRAP1). Like HSP90, TRAP1 is found to be associated with numerous proteins involved in diverse actions (1, 2). Immunofluorescence data has shown TRAP1 to be localized in the mitochondria of mammalian cells. This observation and the fact that TRAP1 is shown to have a mitochondrial targeting pre-sequence strongly implicates TRAP1 as a mitochondrial matrix protein (3).

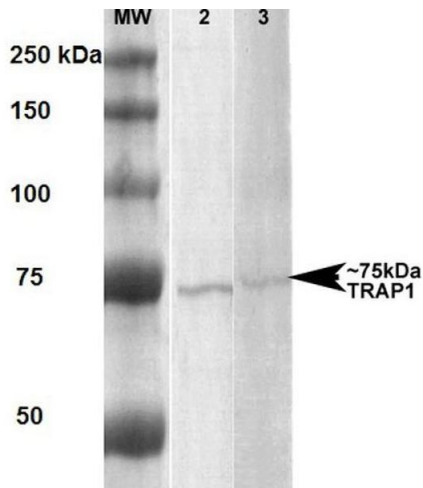
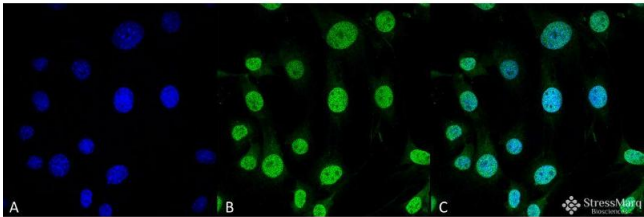
Gene ID:	10131
NCBI Accession:	NP_057376
UniProt:	Q12931

Application Details

Application Notes:	<ul style="list-style-type: none">• WB (1:1000)• ICC/IF (1:100)• optimal dilutions for assays should be determined by the user.
Comment:	1 µg/ml of ABIN2484680 was sufficient for detection of Trap-1/HSP75 in 20 µg of Human A431 lysate by ECL immunoblot analysis using Goat anti-rabbit IgG:HRP as the secondary antibody.
Restrictions:	For Research Use only

Handling

Format:	Liquid
Concentration:	1 mg/mL
Buffer:	PBS pH 7.4, 50 % glycerol, 0.09 % sodium azide, Storage buffer may change when conjugated
Preservative:	Sodium azide
Precaution of Use:	This product contains Sodium azide: a POISONOUS AND HAZARDOUS SUBSTANCE which should be handled by trained staff only.
Storage:	4 °C
Storage Comment:	Conjugated antibodies should be stored at 4°C



Immunofluorescence (fixed cells)

Image 1. Immunocytochemistry/Immunofluorescence analysis using Mouse Anti-Trap1 Monoclonal Antibody, Clone 3H4-2H6 . Tissue: Myoblast cell line C2C12 . Species: Mouse. Fixation: 4% Formaldehyde for 15 min at RT. Primary Antibody: Mouse Anti-Trap1 Monoclonal Antibody at 1:100 for 60 min at RT. Secondary Antibody: Goat Anti-Mouse ATTO 488 at 1:100 for 60 min at RT. Counterstain: DAPI (blue) nuclear stain at 1:5000 for 5 min RT. Localization: Nucleus. Magnification: 60X.

Western Blotting

Image 2. Western Blot analysis of Human, Rat Human A431 and Rat Brain Membrane cell lysates showing detection of ~75 kDa Trap1 protein using Mouse Anti-Trap1 Monoclonal Antibody, Clone 3H4-2H6 . Lane 1: MW ladder. Lane 2: Human lysate, A431. Lane 3: Rat lysate, Rat Brain Membrane (RBM). Load: 20 µg. Block: 5% milk + TBST for 1 hour at RT. Primary Antibody: Mouse Anti-Trap1 Monoclonal Antibody at 1:1000 for 1 hour at RT. Secondary Antibody: HRP Goat Anti-Rabbit at 1:2000 for 1 hour at RT. Color Development: TMB solution for 15 min at RT. Predicted/Observed Size: ~75 kDa.