



[Go to Product page](#)

Datasheet for ABIN2485003

anti-GABRA1 antibody (AA 15-34) (APC)

4 Images

Overview

Quantity:	100 µg
Target:	GABRA1
Binding Specificity:	AA 15-34
Reactivity:	Rat
Host:	Mouse
Clonality:	Monoclonal
Conjugate:	This GABRA1 antibody is conjugated to APC
Application:	Western Blotting (WB), Immunocytochemistry (ICC), Immunofluorescence (IF), Antibody Array (AA)

Product Details

Immunogen:	Synthetic peptide amino acids 15-34 (N-terminus) of rat GABA-A-R-Delta
Clone:	N151-3 (Formerly S151-3)
Isotype:	IgG2a
Specificity:	Detects ~55 kDa.
Cross-Reactivity:	Human, Mouse, Rat
Purification:	Protein G Purified

Target Details

Target:	GABRA1
---------	--------

Target Details

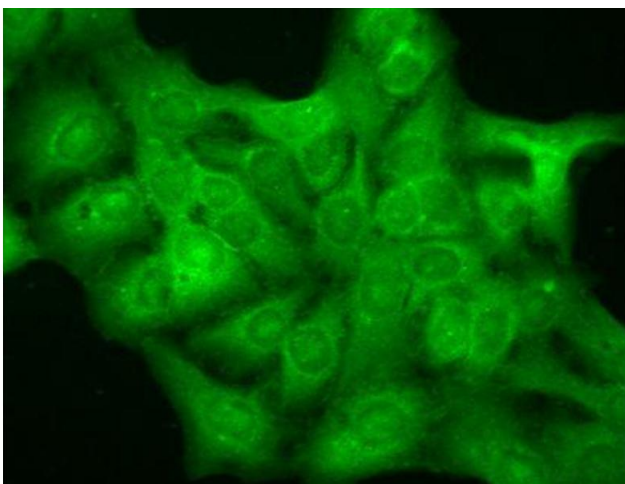
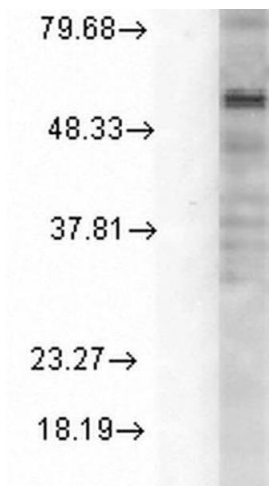
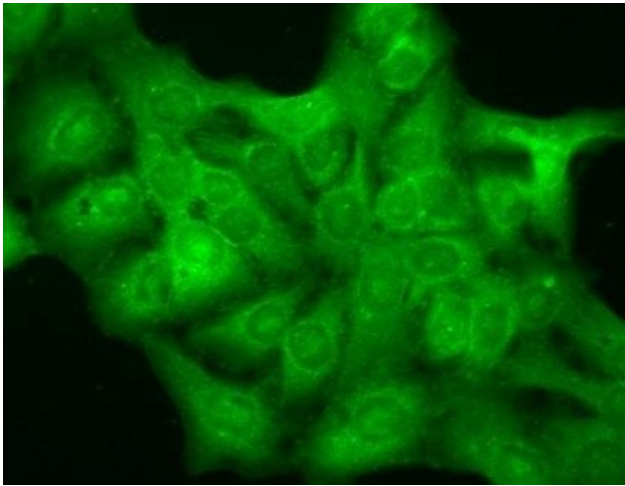
Alternative Name:	GABA A Receptor (GABRA1 Products)
Background:	The GABA-A receptor is a member of the superfamily of fast acting ligand-gated ion channels. The individual subunits of these receptors have similar sequences and structural features (1). GABA-A receptors are the major fast inhibitory neurotransmitter gated ion channels in the brain (2).
Gene ID:	29689
NCBI Accession:	NP_058985
UniProt:	P18506

Application Details

Application Notes:	<ul style="list-style-type: none">• WB (1:1000)• IHC (1:1000)• ICC/IF (1:100)• optimal dilutions for assays should be determined by the user.
Comment:	2 µg/ml of ABIN2485003 was sufficient for detection of Delta1 GABA-A receptor in 10 µg of rat brain lysate by colorimetric immunoblot analysis using goat anti-mouse IgG:HRP as the secondary antibody.
Restrictions:	For Research Use only

Handling

Format:	Liquid
Concentration:	1 mg/mL
Buffer:	PBS pH 7.4, 50 % glycerol, 0.09 % sodium azide, Storage buffer may change when conjugated
Preservative:	Sodium azide
Precaution of Use:	This product contains Sodium azide: a POISONOUS AND HAZARDOUS SUBSTANCE which should be handled by trained staff only.
Storage:	4 °C
Storage Comment:	Conjugated antibodies should be stored at 4°C



Immunocytochemistry

Image 1. Immunocytochemistry/Immunofluorescence analysis using Mouse Anti-GABA A Receptor Monoclonal Antibody, Clone N151/3 (ABIN2485003). Tissue: HaCaT cells. Species: Human. Fixation: Cold 100 % methanol for 10 minutes at -20 °C. Primary Antibody: Mouse Anti-GABA A Receptor Monoclonal Antibody (ABIN2485003) at 1:100 for 1 hour at RT. Secondary Antibody: FITC Goat Anti-Mouse (green) at 1:50 for 1 hour at RT. Localization: Diffuse cytoplasm and dull nuclei.

Western Blotting

Image 2. Western Blot analysis of Rat Cell line lysates showing detection of GABA A Receptor protein using Mouse Anti-GABA A Receptor Monoclonal Antibody, Clone S151-3 . Load: 15 µg. Block: 1.5% BSA for 30 minutes at RT. Primary Antibody: Mouse Anti-GABA A Receptor Monoclonal Antibody at 1:1000 for 2 hours at RT. Secondary Antibody: Sheep Anti-Mouse IgG: HRP for 1 hour at RT.

Immunofluorescence (fixed cells)

Image 3. Immunocytochemistry/Immunofluorescence analysis using Mouse Anti-GABA A Receptor Monoclonal Antibody, Clone S151-3 . Tissue: HaCaT cells. Species: Human. Fixation: Cold 100% methanol for 10 minutes at -20°C. Primary Antibody: Mouse Anti-GABA A Receptor Monoclonal Antibody at 1:100 for 1 hour at RT. Secondary Antibody: FITC Goat Anti-Mouse (green) at 1:50 for 1 hour at RT. Localization: Diffuse cytoplasm and dull nuclei.

Please check the [product details page](#) for more images. Overall 4 images are available for ABIN2485003.