

Datasheet for ABIN2485533

**anti-Erythrocyte Ankyrin antibody (AA 1-1881) (FITC)**

3 Images

[Go to Product page](#)

## Overview

Quantity:	100 µg
Target:	Erythrocyte Ankyrin (ANK1)
Binding Specificity:	AA 1-1881
Reactivity:	Human
Host:	Mouse
Clonality:	Monoclonal
Conjugate:	This Erythrocyte Ankyrin antibody is conjugated to FITC
Application:	Western Blotting (WB), Immunohistochemistry (IHC), Immunocytochemistry (ICC), Immunofluorescence (IF)

## Product Details

Immunogen:	Fusion protein amino acids 1-1881 (full-length) of human Ankyrin-R
Clone:	S388A-10
Isotype:	IgG2b
Specificity:	Detects ~200 kDa. Does not cross-react with Ankyrin-B or Ankyrin-G.
Cross-Reactivity:	Human, Mouse, Rat
Purification:	Protein G Purified

## Target Details

Target:	Erythrocyte Ankyrin (ANK1)
---------	----------------------------

## Target Details

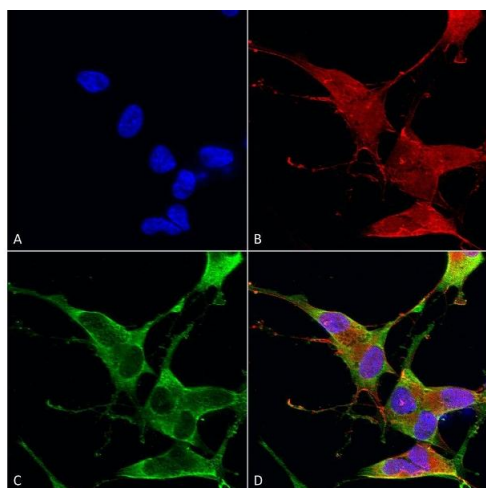
Alternative Name:	Ankyrin R ( <a href="#">ANK1 Products</a> )
Background:	Ankyrins are a family of adaptor proteins that mediate the attachment of integral membrane proteins to the spectrin-actin based membrane skeleton (1). Ankyrins have binding sites for the beta subunit of spectrin and at least 12 families of integral membrane proteins. This linkage is required to maintain the integrity of the plasma membranes and to anchor specific ion channels, ion exchangers and ion transporters in the plasma membrane. Ankyrin R, or Ank1, was first discovered in erythrocytes, but has since also been located in the brain and muscles. Mutations are associated with hereditary spherocytosis and Alzheimer's disease (2).
Gene ID:	286
NCBI Accession:	<a href="#">NP_000028</a>
UniProt:	<a href="#">P16157</a>
Pathways:	<a href="#">Synaptic Membrane</a>

## Application Details

Application Notes:	<ul style="list-style-type: none"><li>• WB (1:1000)</li><li>• optimal dilutions for assays should be determined by the user.</li></ul>
Comment:	A 1:100 dilution of ABIN2485533 was sufficient for detection of Ankyrin R in 20 µg of mouse brain lysate by ECL immunoblot analysis using Goat anti-mouse IgG:HRP as the secondary antibody.
Restrictions:	For Research Use only

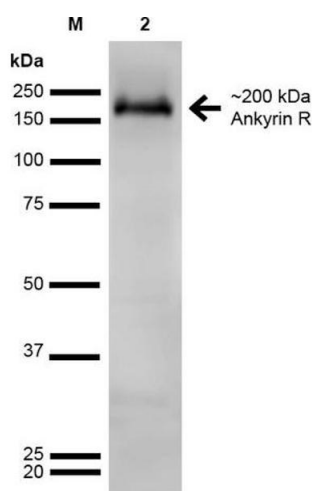
## Handling

Format:	Liquid
Concentration:	1 mg/mL
Buffer:	PBS pH 7.4, 50 % glycerol, 0.1 % sodium azide, Storage buffer may change when conjugated
Preservative:	Sodium azide
Precaution of Use:	This product contains Sodium azide: a POISONOUS AND HAZARDOUS SUBSTANCE which should be handled by trained staff only.
Storage:	4 °C
Storage Comment:	Conjugated antibodies should be stored at 4°C



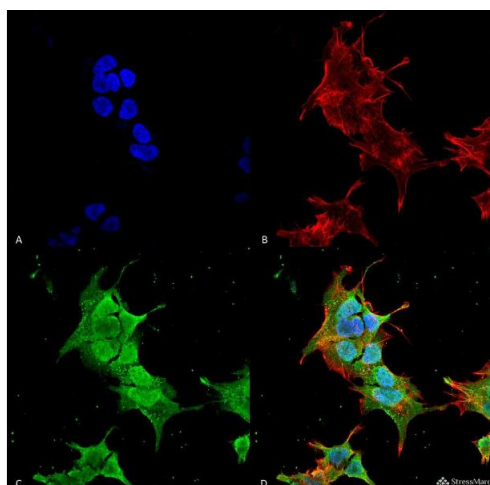
### Immunocytochemistry

**Image 1.** Immunocytochemistry/Immunofluorescence analysis using Mouse Anti-Ankyrin R Monoclonal Antibody, Clone S388A-10 (ABIN2485533). Tissue: Neuroblastoma cells (SH-SY5Y). Species: Human. Fixation: 4 % PFA for 15 min. Primary Antibody: Mouse Anti-Ankyrin R Monoclonal Antibody (ABIN2485533) at 1:100 for overnight at 4 °C with slow rocking. Secondary Antibody: AlexaFluor 488 at 1:1000 for 1 hour at RT. Counterstain: Phalloidin-iFluor 647 (red) F-Actin stain, Hoechst (blue) nuclear stain at 1:800, 1.6 mM for 20 min at RT. (A) Hoechst (blue) nuclear stain. (B) Phalloidin-iFluor 647 (red) F-Actin stain. (C) Ankyrin R Antibody (D) Composite.



### Western Blotting

**Image 2.** Western Blot analysis of Rat Brain showing detection of ~200 kDa Ankyrin-R protein using Mouse Anti-Ankyrin-R Monoclonal Antibody, Clone S388A-10. Lane 1: MW Ladder. Lane 2: Rat Brain. Load: 20 µg. Block: 2% GE Healthcare Blocker for 1 hour at RT. Primary Antibody: Mouse Anti-Ankyrin-R Monoclonal Antibody at 1:1000 for 16 hours at 4°C. Secondary Antibody: Goat Anti-Mouse IgG: HRP at 1:200 for 1 hour at RT. Color Development: ECL solution for 6 min at RT. Predicted/Observed Size: ~200 kDa.



### Immunofluorescence (fixed cells)

**Image 3.** Immunocytochemistry/Immunofluorescence analysis using Mouse Anti-Ankyrin R Monoclonal Antibody, Clone S388A-10. Tissue: Neuroblastoma cell line (SK-N-BE). Species: Human. Fixation: 4% Formaldehyde for 15 min at RT. Primary Antibody: Mouse Anti-Ankyrin R Monoclonal Antibody at 1:100 for 60 min at RT. Secondary Antibody: Goat Anti-Mouse ATTO 488 at 1:100 for 60 min at RT. Counterstain: Phalloidin Texas Red F-Actin stain; DAPI (blue)

nuclear stain at 1:1000; 1:5000 for 60 min RT, 5 min RT.  
Localization: Cytoplasm, Nucleus. Magnification: 60X. (A)  
DAPI (blue) nuclear stain (B) Phalloidin Texas Red F-Actin  
stain (C) Ankyrin R Antibody (D) Composite.