

Datasheet for ABIN2485646

anti-CACNA1C antibody (AA 1507-1733) (Atto 390)[Go to Product page](#)

7 Images

Overview

Quantity:	100 µg
Target:	CACNA1C
Binding Specificity:	AA 1507-1733
Reactivity:	Rabbit
Host:	Mouse
Clonality:	Monoclonal
Conjugate:	This CACNA1C antibody is conjugated to Atto 390
Application:	Western Blotting (WB), Immunohistochemistry (IHC), Immunoprecipitation (IP), Immunofluorescence (IF), Immunocytochemistry (ICC), Antibody Array (AA)

Product Details

Immunogen:	Fusion protein amino acids 1507-1733 (intracellular carboxyl terminus) of rabbit Cav1.2
Clone:	S57
Isotype:	IgG1
Specificity:	Detects ~240 kDa (varies with cell background due to glycosylation).
Cross-Reactivity:	Hamster, Human, Mouse, Rat
Purification:	Protein G Purified

Target Details

Target:	CACNA1C
---------	---------

Target Details

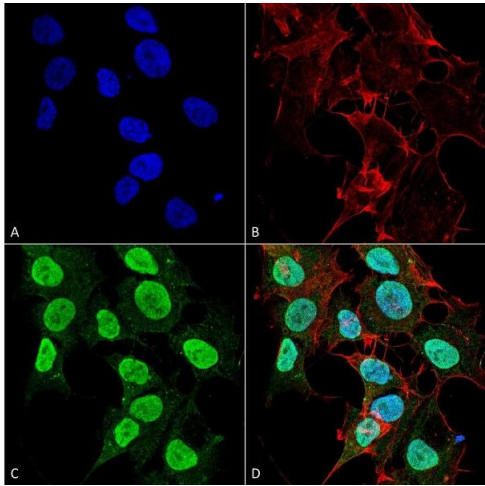
Alternative Name:	Cav1.2 (CACNA1C Products)
Background:	Cav1.2 is a cardiac L-type calcium channel, and is important for excitation and contraction of the heart (1). It may be associated with a variant of Long QT syndrome called Timothy's syndrome (2, 3) and also with Brugada syndrome. Some references also suggest it is related to bipolar disease as well (3).
Gene ID:	100101555
NCBI Accession:	NP_001129994
UniProt:	P15381
Pathways:	Hormone Transport , Carbohydrate Homeostasis

Application Details

Application Notes:	<ul style="list-style-type: none">• WB (1:1000)• IHC (1:1000)• ICC/IF (1:100)• IP (1:200)• optimal dilutions for assays should be determined by the user.
Comment:	1 µg/ml of ABIN2485646 was sufficient for detection of Cav1.2 in 10 µg of rat brain lysate by colorimetric immunoblot analysis using Goat anti-mouse IgG:HRP as the secondary antibody.
Restrictions:	For Research Use only

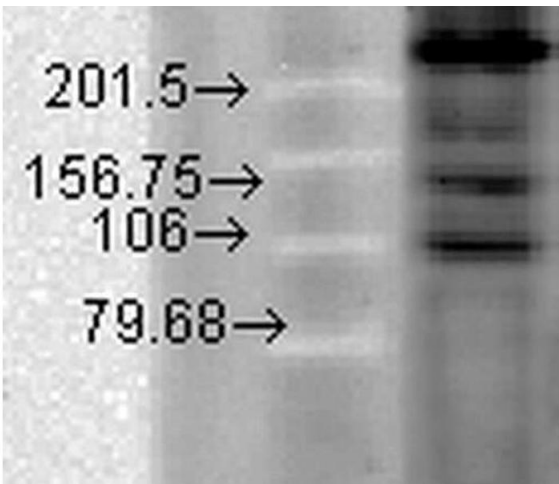
Handling

Format:	Liquid
Concentration:	1 mg/mL
Buffer:	PBS pH 7.4, 50 % glycerol, 0.1 % sodium azide, Storage buffer may change when conjugated
Preservative:	Sodium azide
Precaution of Use:	This product contains Sodium azide: a POISONOUS AND HAZARDOUS SUBSTANCE which should be handled by trained staff only.
Storage:	4 °C
Storage Comment:	Conjugated antibodies should be stored at 4°C



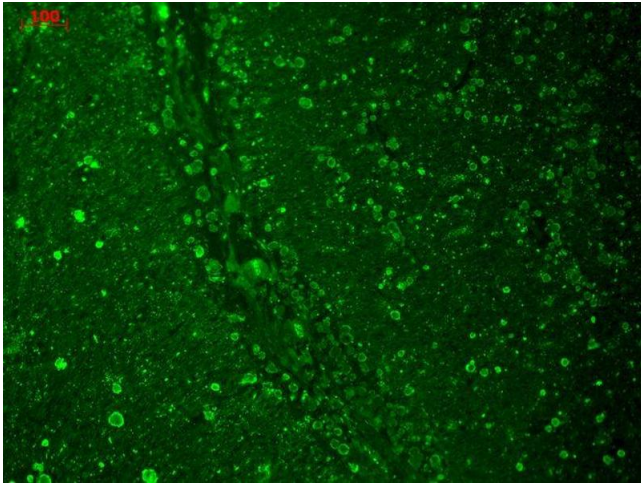
Immunocytochemistry

Image 1. Immunocytochemistry/Immunofluorescence analysis using Mouse Anti-Cav1.2 Monoclonal Antibody, Clone S57 (ABIN2485646). Tissue: Neuroblastoma cell line (SK-N-BE). Species: Human. Fixation: 4 % Formaldehyde for 15 min at RT. Primary Antibody: Mouse Anti-Cav1.2 Monoclonal Antibody (ABIN2485646) at 1:100 for 60 min at RT. Secondary Antibody: Goat Anti-Mouse ATTO 488 at 1:200 for 60 min at RT. Counterstain: Phalloidin Texas Red F-Actin stain, DAPI (blue) nuclear stain at 1:1000, 1:5000 for 60 min at RT, 5 min at RT. Localization: Cell Membrane, Membrane, Cytoplasm, Nucleoplasm. Magnification: 60X. (A) Phalloidin Texas Red F-Actin stain, DAPI (blue) nuclear stain. (B) Anti-Cav1.2 Antibody. (C) Composite. (A) DAPI (blue) nuclear stain. (B) Phalloidin Texas Red F-Actin stain. (C) Cav1.2 Antibody. (D) Composite.



Western Blotting

Image 2. Western Blot analysis of Hamster T-CHO cell lysate showing detection of CaV1.2 Calcium Channel protein using Mouse Anti-CaV1.2 Calcium Channel Monoclonal Antibody, Clone S57-46 . Primary Antibody: Mouse Anti-CaV1.2 Calcium Channel Monoclonal Antibody at 1:1000.



Immunohistochemistry

Image 3. Immunohistochemistry analysis using Mouse Anti-CaV1.2 Calcium Channel Monoclonal Antibody, Clone S57-46 . Tissue: hippocampus. Species: Human. Fixation: 10% formalin. Primary Antibody: Mouse Anti-CaV1.2 Calcium Channel Monoclonal Antibody at 1:100 for 1 hour at RT. Secondary Antibody: FITC Goat Anti-Mouse (green) at 1:50 for 1 hour at RT.

Please check the [product details page](#) for more images. Overall 7 images are available for ABIN2485646.