



[Go to Product page](#)

Datasheet for ABIN2485712

anti-KCNJ8 antibody (AA 306-424) (HRP)

3 Images

Overview

Quantity:	100 µg
Target:	KCNJ8
Binding Specificity:	AA 306-424
Reactivity:	Rat
Host:	Mouse
Clonality:	Monoclonal
Conjugate:	This KCNJ8 antibody is conjugated to HRP
Application:	Western Blotting (WB), Immunohistochemistry (IHC), Immunofluorescence (IF), Immunocytochemistry (ICC)

Product Details

Immunogen:	Fusion protein amino acids 306-424 (Cytoplasmic C-terminus) of rat Kir6.1
Clone:	S366-60
Isotype:	IgG2a
Specificity:	Detects ~45 kDa.
Cross-Reactivity:	Human, Mouse, Rat
Purification:	Protein G Purified

Target Details

Target:	KCNJ8
---------	-------

Target Details

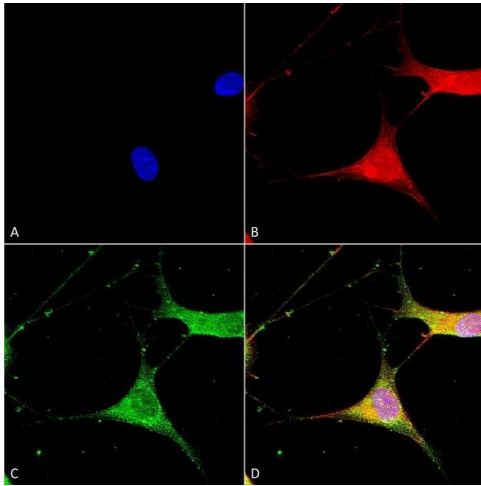
Alternative Name:	Kir6.1 (KCNJ8 Products)
Background:	Several different potassium channels are known to be involved with electrical signaling in the nervous system. One class is activated by depolarization whereas a second class is not. The latter are referred to as inwardly rectifying K ⁺ channels, and they have a greater tendency to allow potassium to flow into the cell rather than out of it. This asymmetry in potassium ion conductance plays a key role in the excitability of muscle cells and neurons. The protein encoded by this gene is an integral membrane protein and member of the inward rectifier potassium channel family (1-3). This is predominantly detected in fetal and adult hearts, and defects can be associated with J-wave syndromes, a group of heart disorders characterized by early repolarization events (4).
Gene ID:	25472
NCBI Accession:	NP_058795
UniProt:	Q63664

Application Details

Application Notes:	<ul style="list-style-type: none">• WB (1:1000)• ICC/IF (1:100)• optimal dilutions for assays should be determined by the user.
Comment:	A 1:100 dilution of ABIN2485712 was sufficient for detection of Kir6.1 in 20 µg of mouse brain lysate by ECL immunoblot analysis using Goat anti-mouse IgG:HRP as the secondary antibody.
Restrictions:	For Research Use only

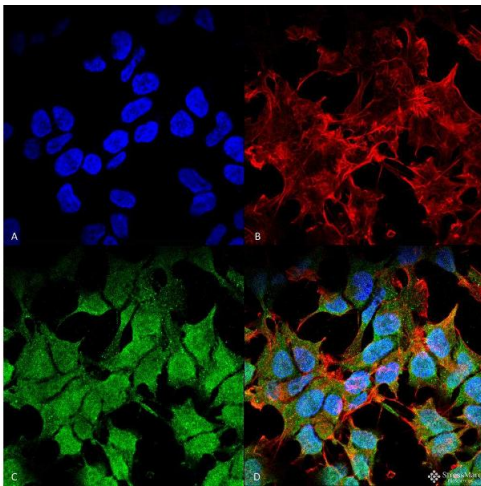
Handling

Format:	Liquid
Concentration:	1 mg/mL
Buffer:	PBS pH 7.4, 50 % glycerol, 0.1 % sodium azide, Storage buffer may change when conjugated
Preservative:	Sodium azide
Precaution of Use:	This product contains Sodium azide: a POISONOUS AND HAZARDOUS SUBSTANCE which should be handled by trained staff only.
Storage:	4 °C
Storage Comment:	Conjugated antibodies should be stored at 4°C



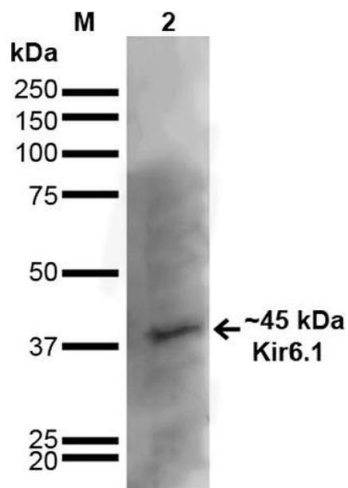
Immunocytochemistry

Image 1. Immunocytochemistry/Immunofluorescence analysis using Mouse Anti-Kir6.1 Monoclonal Antibody, Clone S366-60 (ABIN2485712). Tissue: Neuroblastoma cells (SH-SY5Y). Species: Human. Fixation: 4 % PFA for 15 min. Primary Antibody: Mouse Anti-Kir6.1 Monoclonal Antibody (ABIN2485712) at 1:100 for overnight at 4 °C with slow rocking. Secondary Antibody: AlexaFluor 488 at 1:1000 for 1 hour at RT. Counterstain: Phalloidin-iFluor 647 (red) F-Actin stain, Hoechst (blue) nuclear stain at 1:800, 1.6 mM for 20 min at RT. (A) Hoechst (blue) nuclear stain. (B) Phalloidin-iFluor 647 (red) F-Actin stain. (C) Kir6.1 Antibody (D) Composite.



Immunofluorescence (fixed cells)

Image 2. Immunocytochemistry/Immunofluorescence analysis using Mouse Anti-Kir6.1 Monoclonal Antibody, Clone S366-60 . Tissue: Neuroblastoma cell line (SK-N-BE). Species: Human. Fixation: 4% Formaldehyde for 15 min at RT. Primary Antibody: Mouse Anti-Kir6.1 Monoclonal Antibody at 1:100 for 60 min at RT. Secondary Antibody: Goat Anti-Mouse ATTO 488 at 1:100 for 60 min at RT. Counterstain: Phalloidin Texas Red F-Actin stain; DAPI (blue) nuclear stain at 1:1000, 1:5000 for 60min RT, 5min RT. Localization: Membrane. Magnification: 60X. (A) DAPI (blue) nuclear stain (B) Phalloidin Texas Red F-Actin stain (C) Kir6.1 Antibody (D) Composite.



Western Blotting

Image 3. Western Blot analysis of Rat Brain showing detection of ~45 kDa Kir6.1 protein using Mouse Anti-Kir6.1 Monoclonal Antibody, Clone S366-60 . Lane 1: MW Ladder. Lane 2: Rat Brain. Load: 20 μ g. Block: 2% GE Healthcare Blocker for 1 hour at RT. Primary Antibody: Mouse Anti-Kir6.1 Monoclonal Antibody at 1:1000 for 16 hours at 4°C. Secondary Antibody: Goat Anti-Mouse IgG: HRP at 1:200 for 1 hour at RT. Color Development: ECL solution for 6 min at RT. Predicted/Observed Size: ~45 kDa. Other Band(s): ~100 kDa.