

Datasheet for ABIN2486293

anti-SLC12A3 antibody (AA 74-95) (FITC)[Go to Product page](#)

4 Images

Overview

| | |
|----------------------|--|
| Quantity: | 100 µg |
| Target: | SLC12A3 |
| Binding Specificity: | AA 74-95 |
| Reactivity: | Rat |
| Host: | Rabbit |
| Clonality: | Polyclonal |
| Conjugate: | This SLC12A3 antibody is conjugated to FITC |
| Application: | Western Blotting (WB), Immunohistochemistry (IHC), Immunocytochemistry (ICC), Immunofluorescence (IF), Immunoelectron Microscopy (IEM) |

Product Details

| | |
|-------------------|--|
| Immunogen: | Produced against a synthetic peptide mapping to a segment of rat NCC (amino acids 74-95), N-terminal |
| Specificity: | Detects ~160 kDa. |
| Cross-Reactivity: | Dog, Human, Mouse, Rat |
| Purification: | Affinity Purified |

Target Details

| | |
|-------------------|--|
| Target: | SLC12A3 |
| Alternative Name: | NCC (SLC12A3 Products) |

Target Details

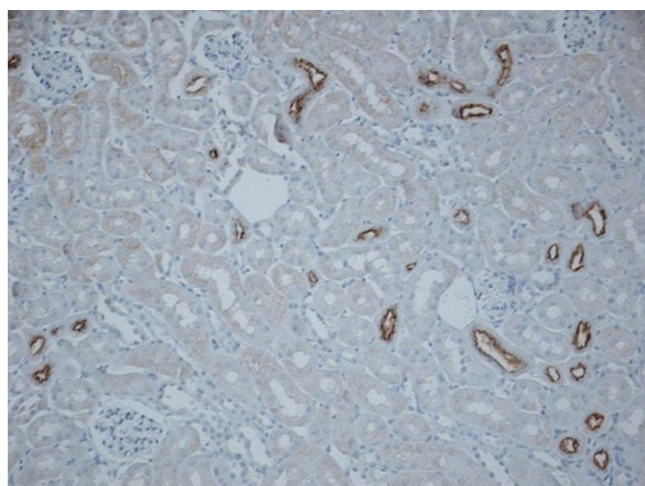
| | |
|-----------------|---|
| Background: | NCC, a thiazide-sensitive NaCl co-transporter, is found on the apical membrane of the distal convoluted tubule, where it is the principal mediator of Na ⁺ and Cl ⁻ reabsorption in this segment of the nephron. It is activated by phosphorylation, and has been implicated in renal NaCl and K ⁺ homeostasis (1). Regulation of NCC expression and phosphorylation by dietary NaCl restriction appears to involve SGK1(1). In experiments with angiotensin II-infused mice, increased sensitivity to Ang II may involved over-activity of NCC (2). Therefore, NCC is the target of thiazide diuretics used in the treatment of hypertension (1). Molecular experiments have also shown that NCC has been detected in the lens cortex, core and fiber cells of a rat (3). |
| Gene ID: | 54300, 6559 |
| NCBI Accession: | NP_062218 , NP_000330 |
| UniProt: | P55018 , P55017 |

Application Details

| | |
|--------------------|--|
| Application Notes: | <ul style="list-style-type: none">• WB (1:1000)• IHC (1:200)• optimal dilutions for assays should be determined by the user. |
| Comment: | 1 µg/ml of ABIN2486293 was sufficient for detection of NCC3 in 10 µg of rat kidney tissue lysate by colorimetric immunoblot analysis using Goat anti-rabbit IgG:HRP as the secondary antibody. |
| Restrictions: | For Research Use only |

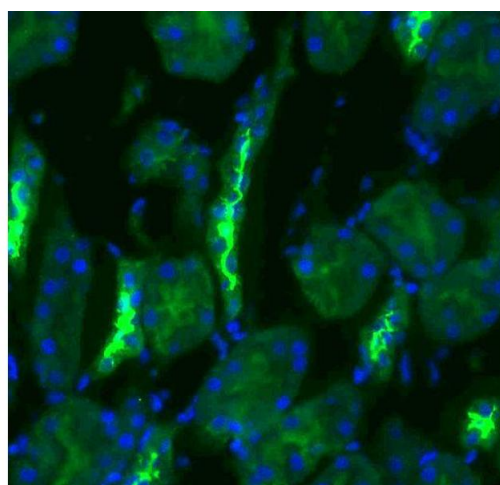
Handling

| | |
|--------------------|--|
| Format: | Liquid |
| Concentration: | 1 mg/mL |
| Buffer: | PBS, 50 % glycerol, 0.09 % sodium azide, Storage buffer may change when conjugated |
| Preservative: | Sodium azide |
| Precaution of Use: | This product contains Sodium azide: a POISONOUS AND HAZARDOUS SUBSTANCE which should be handled by trained staff only. |
| Storage: | 4 °C |
| Storage Comment: | Conjugated antibodies should be stored at 4°C |



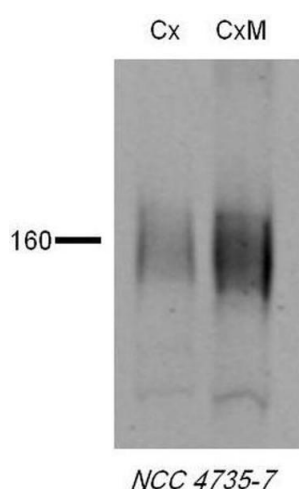
Immunohistochemistry

Image 1. Immunohistochemistry analysis using Rabbit Anti-NCC Polyclonal Antibody (ABIN2486293). Tissue: kidney tissue. Species: Mouse. Fixation: paraformaldehyde-fixed paraffin-embedded. Primary Antibody: Rabbit Anti-NCC Polyclonal Antibody (ABIN2486293) at 1:500 for Overnight at 4 °C . Secondary Antibody: Biotinylated Goat Anti-Rabbit IgG at 1:500 for 30 min at RT. Courtesy of: Brigitte Rogge.



Immunohistochemistry

Image 2. Immunohistochemistry analysis using Rabbit Anti-NCC Polyclonal Antibody . Tissue: kidney tissue. Species: Rat. Primary Antibody: Rabbit Anti-NCC Polyclonal Antibody at 1:200. Secondary Antibody: FITC Goat Anti-Rabbit (green).



Western Blotting

Image 3. Western blot analysis of Rat tissue lysates showing detection of NCC protein using Rabbit Anti-NCC Polyclonal Antibody . Primary Antibody: Rabbit Anti-NCC Polyclonal Antibody at 1:1000.

Please check the [product details page](#) for more images. Overall 4 images are available for ABIN2486293.