

Datasheet for ABIN2486485  
**anti-CENPA antibody (Atto 390)**[Go to Product page](#)

## 2 Images

## Overview

Quantity:	100 µg
Target:	CENPA
Reactivity:	Human
Host:	Mouse
Clonality:	Monoclonal
Conjugate:	This CENPA antibody is conjugated to Atto 390
Application:	Western Blotting (WB), Immunofluorescence (IF), Immunocytochemistry (ICC)

## Product Details

Immunogen:	Synthetic peptide corresponding to a portion of human CENP-A
Clone:	5A7-2E11
Isotype:	IgG1
Specificity:	Detects ~18 kDa. Recognizes Human CENP-A.
Cross-Reactivity:	Human
Purification:	Protein G Purified

## Target Details

Target:	CENPA
Alternative Name:	CENPA ( <a href="#">CENPA Products</a> )
Background:	A replicated chromosome includes two kinetochores that control chromosome segregation

## Target Details

during mitosis. The Centromere Protein-A, CENP-A, is a Histone H3-like protein that contains a C-terminal H3-like domain, which is required for centromere localization of CENP-A, and an antigenic N-terminal domain. CENP-A, originally isolated from HeLa cells, is essential for kinetochore targeting of CENP-C. In the presence of DNA CENP-A forms an octa-meric complex with histones H4, H2A, H2B. CENP-A specifically localizes to active centromeres and is a component of specialized centromeric nucleosomes, on which kinetochores are assembled. CENP-A is essential for nucleosomal packaging of centromeric DNA at interphase and functions as a centromere formation marker on the chromosome.

Gene ID: 1058

NCBI Accession: [NP\\_001035891](#)

UniProt: [P49450](#)

Pathways: [Chromatin Binding](#), [Maintenance of Protein Location](#)

## Application Details

Application Notes:

- WB (1:1000)
- ICC/IF (1:100)
- optimal dilutions for assays should be determined by the user.

Comment: 1 µg/ml of ABIN2486485 was sufficient for detection of CENPA in 20 µg of U2OS cell lysate by colorimetric immunoblot analysis using Goat anti-mouse IgG:HRP as the secondary antibody.

Restrictions: For Research Use only

## Handling

Format: Liquid

Concentration: 1 mg/mL

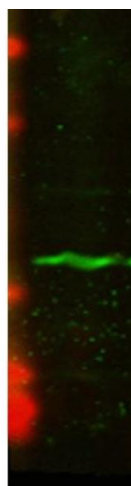
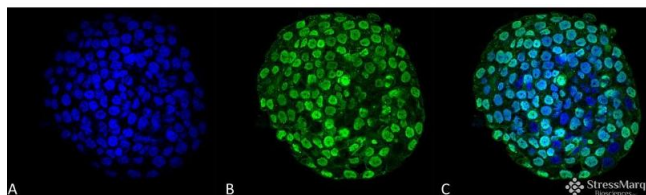
Buffer: PBS, 50 % glycerol, 0.09 % sodium azide, Storage buffer may change when conjugated

Preservative: Sodium azide

Precaution of Use: This product contains Sodium azide: a POISONOUS AND HAZARDOUS SUBSTANCE which should be handled by trained staff only.

Storage: 4 °C

Storage Comment: Conjugated antibodies should be stored at 4°C



### Immunofluorescence (fixed cells)

**Image 1.** Immunocytochemistry/Immunofluorescence analysis using Mouse Anti-CENP-A Monoclonal Antibody, Clone 5A7-2E11 . Tissue: Colon cancer cell line (HT-29). Species: Human. Fixation: 4% Formaldehyde for 15 min at RT. Primary Antibody: Mouse Anti-CENP-A Monoclonal Antibody at 1:100 for 60 min at RT. Secondary Antibody: Goat Anti-Mouse ATTO 488 at 1:100 for 60 min at RT. Counterstain: DAPI (blue) nuclear stain at 1:5000 for 5 min RT. Localization: Nucleus. Magnification: 60X.

### Western Blotting

**Image 2.** Western Blot analysis of Human U2OS cell lysate showing detection of CENP-A protein using Mouse Anti-CENP-A Monoclonal Antibody, Clone 5A7-2E11 . Primary Antibody: Mouse Anti-CENP-A Monoclonal Antibody at 1:1000.