

Datasheet for ABIN249343  
**anti-Abeta 1-42 antibody**



[Go to Product page](#)

1 Image 1 Publication

## Overview

Quantity:	100 µL
Target:	Abeta 1-42
Reactivity:	Human
Host:	Rabbit
Clonality:	Polyclonal
Conjugate:	This Abeta 1-42 antibody is un-conjugated
Application:	Western Blotting (WB), ELISA, Dot Blot (DB), Immunolocalization (IL)

## Product Details

Immunogen:	synthetic peptide chosen from human Abeta (1-42) protein. Amino acid sequence: D-A-E-F-R-H-D-S-G-Y-E-V-H-H-Q-K-L-V-F-F-A-E-D-V-G-S-N-K-G-A-I-I-G-L-M-V-G-G-V-V-I-A
Cross-Reactivity (Details):	Not reactive in: no confirmed exceptions from predicted reactivity known in the moment
Predicted Reactivity:	bovine, chicken, dog, porcine, rabbit
Characteristics:	Expected / apparent Molecular Weight of the Antigen: 4.5 kDa
Purification:	serum

## Target Details

Target:	Abeta 1-42
Alternative Name:	Amyloid-beta 42 protein (Abeta (1-42)) ( <a href="#">Abeta 1-42 Products</a> )
Background:	Alzheimer's disease (AD) is the most prevalent neurodegenerative disease in the growing

## Target Details

population of elderly people. A hallmark of AD is the accumulation of plaques in the brain of AD patients. The plaques predominantly consist of aggregates of amyloid-beta (Abeta), a peptide of 39-42 amino acids generated in vivo by specific, proteolytic cleavage of the amyloid precursor protein P05067

Molecular Weight: 4.5 kDa

## Application Details

Application Notes: 1:1000 (DB), 1:3000 (ELISA), 1-2 µg/mL (IL)

Comment: the antibody can detect Abeta (1-42), Abeta (1-28) Abeta (1-20) and Abeta (1-17). This product exhibits a low reactivity to monomeric Abeta (1-42) as determined by SDS-PAGE and Western blotting.

Restrictions: For Research Use only

## Handling

Format: Lyophilized

Reconstitution: For reconstitution add 100 µL of sterile water.

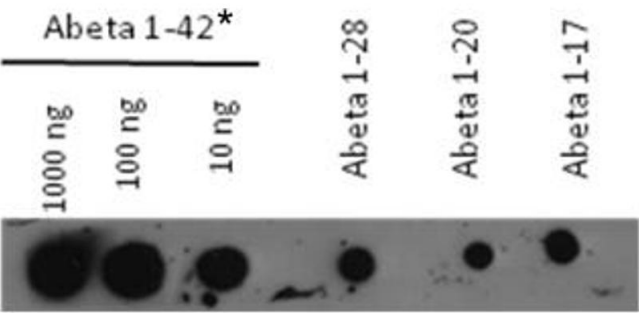
Handling Advice: Please, remember to spin tubes briefly prior to opening them to avoid any losses that might occur from lyophilized material adhering to the cap or sides of the tubes.  
Once reconstituted make aliquots to avoid repeated freeze-thaw cycles.

Storage: -20 °C

Storage Comment: store lyophilized/reconstituted at -20°C, once reconstituted make aliquots to avoid repeated freeze-thaw cycles. Please, remember to spin tubes briefly prior to opening them to avoid any losses that might occur from lyophilized material adhering to the cap or sides of the tubes.

## Publications

Product cited in: Lindhagen-Persson, Brännström, Vestling, Steinitz, Olofsson: "Amyloid-? oligomer specificity mediated by the IgM isotype--implications for a specific protective mechanism exerted by endogenous auto-antibodies." in: **PLoS ONE**, Vol. 5, Issue 11, pp. e13928, (2010) ([PubMed](#)).



**Image 1.** beta(1-42) consists of both monomeric and partly aggregated mtrl