

Datasheet for ABIN2559428  
**anti-Cathepsin H antibody (AA 116-200)**[Go to Product page](#)

## 2 Images

## Overview

Quantity:	100 µL
Target:	Cathepsin H (CTSH)
Binding Specificity:	AA 116-200
Reactivity:	Human
Host:	Rabbit
Clonality:	Polyclonal
Conjugate:	This Cathepsin H antibody is un-conjugated
Application:	Western Blotting (WB), ELISA, Immunohistochemistry (Paraffin-embedded Sections) (IHC (p)), Immunofluorescence (Cultured Cells) (IF (cc)), Immunofluorescence (Paraffin-embedded Sections) (IF (p)), Immunocytochemistry (ICC), Immunohistochemistry (Frozen Sections) (IHC (fro))

## Product Details

Immunogen:	KLH conjugated synthetic peptide derived from human Cathepsin H heavy chain
Isotype:	IgG
Predicted Reactivity:	Human,Mouse,Rat,Dog,Cow,Sheep,Pig,Horse,Rabbit
Purification:	Purified by Protein A.

## Target Details

Target:	Cathepsin H (CTSH)
Alternative Name:	Cathepsin H heavy chain ( <a href="#">CTSH Products</a> )

## Target Details

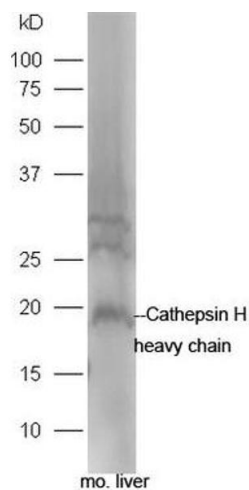
Background:	Synonyms: ACC4, ACC5, CPSB, ACC-4, ACC-5, minichain, Pro-cathepsin H, CTSH Background: Important for the overall degradation of proteins in lysosomes.
Gene ID:	1512
UniProt:	<a href="#">P09668</a>
Pathways:	<a href="#">Positive Regulation of Endopeptidase Activity</a>

## Application Details

Application Notes:	WB 1:300-5000 ELISA 1:500-1000 IHC-P 1:200-400 IHC-F 1:100-500 IF(IHC-P) 1:50-200 IF(IHC-F) 1:50-200 IF(ICC) 1:50-200 ICC 1:100-500
Restrictions:	For Research Use only

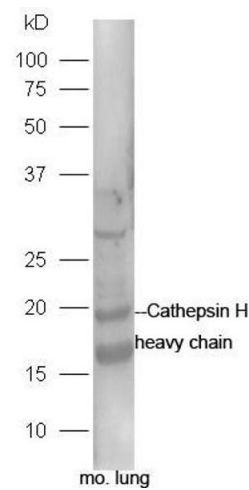
## Handling

Format:	Liquid
Concentration:	1 µg/µL
Buffer:	0.01M TBS( pH 7.4) with 1 % BSA, 0.02 % Proclin300 and 50 % Glycerol.
Preservative:	ProClin
Precaution of Use:	This product contains ProClin: a POISONOUS AND HAZARDOUS SUBSTANCE, which should be handled by trained staff only.
Storage:	4 °C, -20 °C
Storage Comment:	Shipped at 4°C. Store at -20°C for one year. Avoid repeated freeze/thaw cycles.
Expiry Date:	12 months



#### Western Blotting

**Image 1.** Mouse liver lysate probed with Rabbit Anti-Cathepsin H heavy chain Polyclonal Antibody, Unconjugated (ABIN2559428) at 1:300 in 4°C. Followed by conjugation to secondary antibody at 1:5000 for 90min at 37°C.



#### Western Blotting

**Image 2.** Mouse lung lysates probed with Rabbit Anti-Cathepsin H heavy chain Polyclonal Antibody, Unconjugated (ABIN2559428) at 1:300 in 4°C. Followed by conjugation to secondary antibody at 1:5000 for 90min at 37°C.