



[Go to Product page](#)

Datasheet for ABIN2559431
anti-CCL1 antibody (AA 51-96)

1 Image

Overview

Quantity:	100 µL
Target:	CCL1
Binding Specificity:	AA 51-96
Reactivity:	Human
Host:	Rabbit
Clonality:	Polyclonal
Conjugate:	This CCL1 antibody is un-conjugated
Application:	Western Blotting (WB), ELISA, Immunofluorescence (Cultured Cells) (IF (cc)), Immunofluorescence (Paraffin-embedded Sections) (IF (p)), Immunocytochemistry (ICC), Immunohistochemistry (Paraffin-embedded Sections) (IHC (p)), Immunohistochemistry (Frozen Sections) (IHC (fro))

Product Details

Immunogen:	KLH conjugated synthetic peptide derived from human CCL1
Isotype:	IgG
Cross-Reactivity:	Human
Purification:	Purified by Protein A.

Target Details

Target:	CCL1
Alternative Name:	CCL1 (CCL1 Products)

Target Details

Background: Synonyms: P500, SISE, TCA3, I-309, SCYA1, C-C motif chemokine 1, Small-inducible cytokine A1, T lymphocyte-secreted protein I-309, CCL1
Background: Cytokine that is chemotactic for monocytes but not for neutrophils. Binds to CCR8.

Gene ID: 6346

UniProt: [P22362](#)

Application Details

Application Notes: WB 1:300-5000
ELISA 1:500-1000
IHC-P 1:200-400
IHC-F 1:100-500
IF(IHC-P) 1:50-200
IF(IHC-F) 1:50-200
IF(ICC) 1:50-200
ICC 1:100-500

Restrictions: For Research Use only

Handling

Format: Liquid

Concentration: 1 µg/µL

Buffer: 0.01M TBS(pH 7.4) with 1 % BSA, 0.02 % Proclin300 and 50 % Glycerol.

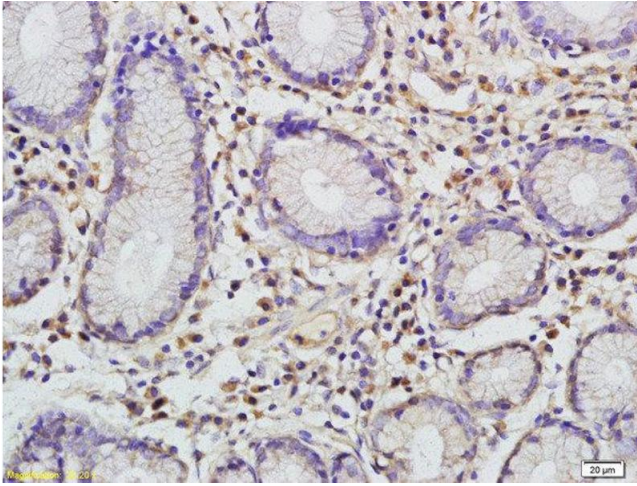
Preservative: ProClin

Precaution of Use: This product contains ProClin: a POISONOUS AND HAZARDOUS SUBSTANCE, which should be handled by trained staff only.

Storage: 4 °C, -20 °C

Storage Comment: Shipped at 4°C. Store at -20°C for one year. Avoid repeated freeze/thaw cycles.

Expiry Date: 12 months



Immunohistochemistry (Paraffin-embedded Sections)

Image 1. Formalin-fixed and paraffin embedded human gastric carcinoma labeled with Rabbit Anti-CCL1 Polyclonal Antibody, Unconjugated (ABIN2559431) at 1:200 followed by conjugation to the secondary antibody and DAB staining