

Datasheet for ABIN2559496

anti-Ras Protein-Specific Guanine Nucleotide-Releasing Factor 2 (RASGRF2) (AA 20-120) antibody[Go to Product page](#)**1** Image

Overview

Quantity:	100 µL
Target:	Ras Protein-Specific Guanine Nucleotide-Releasing Factor 2 (RASGRF2)
Binding Specificity:	AA 20-120
Reactivity:	Mouse
Host:	Rabbit
Clonality:	Polyclonal
Conjugate:	Un-conjugated
Application:	Western Blotting (WB), Immunofluorescence (Cultured Cells) (IF (cc)), Immunofluorescence (Paraffin-embedded Sections) (IF (p)), ELISA, Immunohistochemistry (Paraffin-embedded Sections) (IHC (p)), Immunohistochemistry (Frozen Sections) (IHC (fro)), Immunocytochemistry (ICC)

Product Details

Immunogen:	KLH conjugated synthetic peptide derived from human GRF2
Isotype:	IgG
Cross-Reactivity:	Mouse
Predicted Reactivity:	Human,Rat,Cow,Sheep
Purification:	Purified by Protein A.

Target Details

Target:	Ras Protein-Specific Guanine Nucleotide-Releasing Factor 2 (RASGRF2)
---------	--

Target Details

Alternative Name:	GRF2 (RASGRF2 Products)
Background:	<p>Synonyms: GRF2, RAS-GRF2, Ras-specific guanine nucleotide-releasing factor 2, Ras guanine nucleotide exchange factor 2, RASGRF2</p> <p>Background: Functions as a calcium-regulated nucleotide exchange factor activating both Ras and RAC1 through the exchange of bound GDP for GTP. Preferentially activates HRAS in vivo compared to RRAS based on their different types of prenylation. Functions in synaptic plasticity by contributing to the induction of long term potentiation.</p>
Gene ID:	5924
UniProt:	O14827
Pathways:	Neurotrophin Signaling Pathway

Application Details

Application Notes:	WB 1:300-5000 ELISA 1:500-1000 IHC-P 1:200-400 IHC-F 1:100-500 IF(IHC-P) 1:50-200 IF(IHC-F) 1:50-200 IF(ICC) 1:50-200 ICC 1:100-500
Restrictions:	For Research Use only

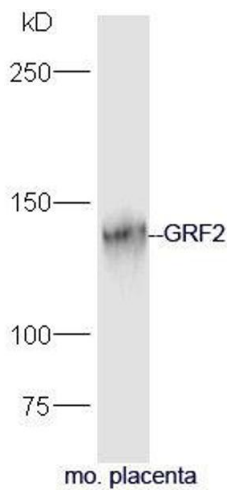
Handling

Format:	Liquid
Concentration:	1 µg/µL
Buffer:	0.01M TBS(pH 7.4) with 1 % BSA, 0.02 % Proclin300 and 50 % Glycerol.
Preservative:	ProClin
Precaution of Use:	This product contains ProClin: a POISONOUS AND HAZARDOUS SUBSTANCE, which should be handled by trained staff only.
Storage:	4 °C,-20 °C
Storage Comment:	Shipped at 4°C. Store at -20°C for one year. Avoid repeated freeze/thaw cycles.

Handling

Expiry Date: 12 months

Images



Western Blotting

Image 1. Mouse placenta lysate probed with Rabbit Anti-GRF2 Polyclonal Antibody, Unconjugated (ABIN2559496) at 1:300 in 4°C. Followed by conjugation to secondary antibody at 1:5000 for 90min at 37°C.