

Datasheet for ABIN2559502
anti-Gasdermin A antibody (AA 21-120)



[Go to Product page](#)

4 Images

Overview

Quantity:	100 µL
Target:	Gasdermin A (GSDMA)
Binding Specificity:	AA 21-120
Reactivity:	Human, Mouse, Rat
Host:	Rabbit
Clonality:	Polyclonal
Conjugate:	This Gasdermin A antibody is un-conjugated
Application:	Western Blotting (WB), ELISA, Immunofluorescence (Cultured Cells) (IF (cc)), Immunofluorescence (Paraffin-embedded Sections) (IF (p)), Immunohistochemistry (Paraffin- embedded Sections) (IHC (p)), Immunohistochemistry (Frozen Sections) (IHC (fro)), Immunocytochemistry (ICC)

Product Details

Immunogen:	KLH conjugated synthetic peptide derived from human Osteopontin
Isotype:	IgG
Cross-Reactivity:	Human, Mouse, Rat
Predicted Reactivity:	Dog,Cow,Horse
Purification:	Purified by Protein A.

Target Details

Target:	Gasdermin A (GSDMA)
---------	---------------------

Target Details

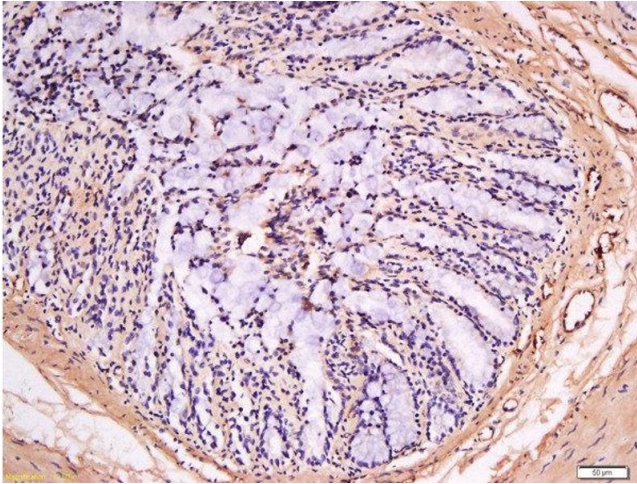
Alternative Name:	GSDMA (GSDMA Products)
Background:	Synonyms: GSDM, FKSG9, GSDM1, Gasdermin-A, Gasdermin-1, GSDMA Background: Induces apoptosis.
Gene ID:	284110
UniProt:	Q96QA5

Application Details

Application Notes:	WB 1:300-5000 ELISA 1:500-1000 IHC-P 1:200-400 IHC-F 1:100-500 IF(IHC-P) 1:50-200 IF(IHC-F) 1:50-200 IF(ICC) 1:50-200 ICC 1:100-500
Restrictions:	For Research Use only

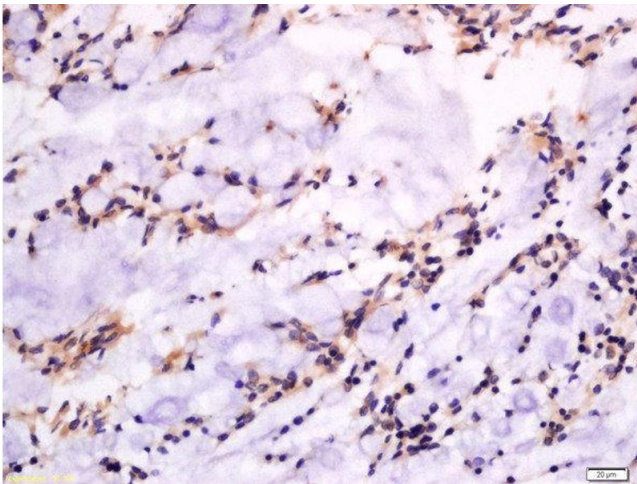
Handling

Format:	Liquid
Concentration:	1 µg/µL
Buffer:	0.01M TBS(pH 7.4) with 1 % BSA, 0.02 % Proclin300 and 50 % Glycerol.
Preservative:	ProClin
Precaution of Use:	This product contains ProClin: a POISONOUS AND HAZARDOUS SUBSTANCE, which should be handled by trained staff only.
Storage:	4 °C, -20 °C
Storage Comment:	Shipped at 4°C. Store at -20°C for one year. Avoid repeated freeze/thaw cycles.
Expiry Date:	12 months



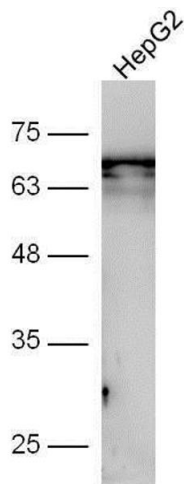
Immunohistochemistry (Paraffin-embedded Sections)

Image 1. Formalin-fixed and paraffin embedded human kidney labeled with Anti-GSDMA Polyclonal Antibody, Unconjugated at 1:300 followed by conjugation to the secondary antibody and DAB staining.



Immunohistochemistry (Paraffin-embedded Sections)

Image 2. Formalin-fixed and paraffin embedded rat rectum labeled with Anti-GSDMA Polyclonal Antibody, Unconjugated at 1:300 followed by conjugation to the secondary antibody and DAB staining.



Western Blotting

Image 3. HepG2 cell lysate probed with Anti-GSDMA Polyclonal Antibody, Unconjugated at 1:5000 for 90 min at 37°C.

Please check the [product details page](#) for more images. Overall 4 images are available for ABIN2559502.