



[Go to Product page](#)

Datasheet for ABIN2559508  
**anti-POGLUT1 antibody (AA 201-300)**

1 Image

Overview

Quantity:	100 µL
Target:	POGLUT1
Binding Specificity:	AA 201-300
Reactivity:	Mouse
Host:	Rabbit
Clonality:	Polyclonal
Conjugate:	This POGLUT1 antibody is un-conjugated
Application:	Western Blotting (WB), ELISA, Immunofluorescence (Cultured Cells) (IF (cc)), Immunofluorescence (Paraffin-embedded Sections) (IF (p)), Immunohistochemistry (Paraffin-embedded Sections) (IHC (p)), Immunohistochemistry (Frozen Sections) (IHC (fro)), Immunocytochemistry (ICC)

Product Details

Immunogen:	KLH conjugated synthetic peptide derived from human KTELC1
Isotype:	IgG
Cross-Reactivity:	Mouse
Predicted Reactivity:	Human,Rat,Dog,Cow,Sheep,Horse,Rabbit
Purification:	Purified by Protein A.

Target Details

Target:	POGLUT1
---------	---------

## Target Details

---

Alternative Name:	<a href="#">KTELC1 (POGLUT1 Products)</a>
Background:	<p>Synonyms: Rumi, CLP46, MDSRP, C3orf9, KTELC1, MDS010, hCLP46, KDELCL1, Protein O-glucosyltransferase 1, CAP10-like 46 kDa protein, KTEL motif-containing protein 1, Myelodysplastic syndromes relative protein, O-glucosyltransferase Rumi homolog, hRumi, Protein O-xylosyltransferase, POGLUT1, UNQ490/PRO1006</p> <p>Background: Dual specificity glycosyltransferase. Catalyzes the transfer of glucose and xylose from UDP-glucose and UDP-xylose, respectively, to EGF repeats, such as those found in F7, F9 and NOTCH2, on the consensus sequence C-X-S-X-P-C. Positively regulates Notch signaling without affecting Notch ligand binding.</p>
Gene ID:	56983
UniProt:	<a href="#">Q8NBL1</a>
Pathways:	<a href="#">Notch Signaling</a>

## Application Details

---

Application Notes:	WB 1:300-5000 ELISA 1:500-1000 IHC-P 1:200-400 IHC-F 1:100-500 IF(IHC-P) 1:50-200 IF(IHC-F) 1:50-200 IF(ICC) 1:50-200 ICC 1:100-500
Restrictions:	For Research Use only

## Handling

---

Format:	Liquid
Concentration:	1 µg/µL
Buffer:	0.01M TBS( pH 7.4) with 1 % BSA, 0.02 % Proclin300 and 50 % Glycerol.
Preservative:	ProClin
Precaution of Use:	This product contains ProClin: a POISONOUS AND HAZARDOUS SUBSTANCE, which should be handled by trained staff only.

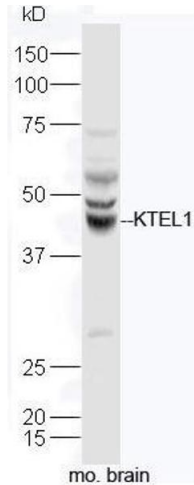
## Handling

Storage: 4 °C, -20 °C

Storage Comment: Shipped at 4°C. Store at -20°C for one year. Avoid repeated freeze/thaw cycles.

Expiry Date: 12 months

## Images



### Western Blotting

**Image 1.** Mouse brain lysates probed with Rabbit Anti-KTELC1 Polyclonal Antibody, Unconjugated at 1:5000 for 90min at 37°C.