

Datasheet for ABIN2559527
anti-LMAN1 antibody (AA 31-130)

3 Images

[Go to Product page](#)

Overview

Quantity:	100 µL
Target:	LMAN1
Binding Specificity:	AA 31-130
Reactivity:	Human
Host:	Rabbit
Clonality:	Polyclonal
Conjugate:	This LMAN1 antibody is un-conjugated
Application:	Western Blotting (WB), ELISA, Immunofluorescence (Cultured Cells) (IF (cc)), Immunofluorescence (Paraffin-embedded Sections) (IF (p)), Immunohistochemistry (Paraffin-embedded Sections) (IHC (p)), Immunocytochemistry (ICC), Immunohistochemistry (Frozen Sections) (IHC (fro))

Product Details

Immunogen:	KLH conjugated synthetic peptide derived from human LMAN1.
Isotype:	IgG
Cross-Reactivity:	Human
Predicted Reactivity:	Mouse,Rat,Dog,Cow,Sheep,Horse,Rabbit
Purification:	Purified by Protein A.

Target Details

Target:	LMAN1
---------	-------

Target Details

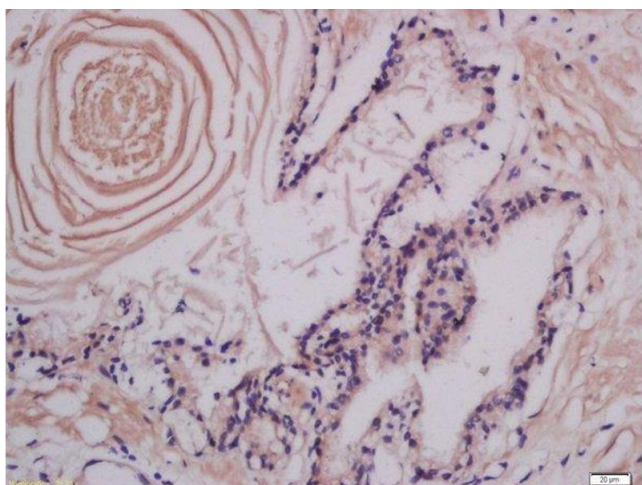
Alternative Name:	LMAN1 (LMAN1 Products)
Background:	<p>Synonyms: MR60, gp58, F5F8D, FMFD1, MCFD1, ERGIC53, ERGIC-53, Protein ERGIC-53, ER-Golgi intermediate compartment 53 kDa protein, Intracellular mannose-specific lectin MR60, Lectin mannose-binding 1, LMAN1</p> <p>Background: Mannose-specific lectin. May recognize sugar residues of glycoproteins, glycolipids, or glycosylphosphatidyl inositol anchors and may be involved in the sorting or recycling of proteins, lipids, or both. The LMAN1-MCFD2 complex forms a specific cargo receptor for the ER-to-Golgi transport of selected proteins.</p>
Gene ID:	3998
UniProt:	P49257

Application Details

Application Notes:	WB 1:300-5000 ELISA 1:500-1000 IHC-P 1:200-400 IHC-F 1:100-500 IF(IHC-P) 1:50-200 IF(IHC-F) 1:50-200 IF(ICC) 1:50-200 ICC 1:100-500
Restrictions:	For Research Use only

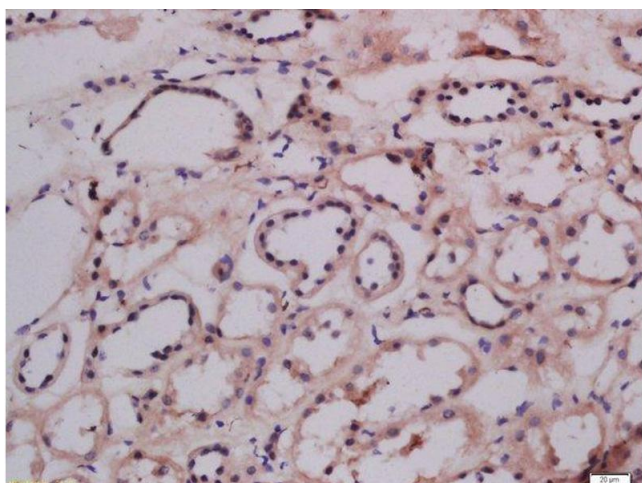
Handling

Format:	Liquid
Concentration:	1 µg/µL
Buffer:	0.01M TBS(pH 7.4) with 1 % BSA, 0.02 % Proclin300 and 50 % Glycerol.
Preservative:	ProClin
Precaution of Use:	This product contains ProClin: a POISONOUS AND HAZARDOUS SUBSTANCE, which should be handled by trained staff only.
Storage:	4 °C,-20 °C
Storage Comment:	Shipped at 4°C. Store at -20°C for one year. Avoid repeated freeze/thaw cycles.



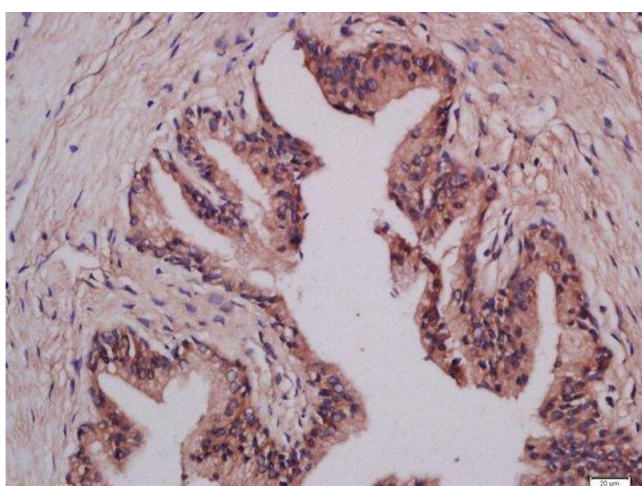
Immunohistochemistry (Paraffin-embedded Sections)

Image 1. Formalin-fixed and paraffin embedded human prostate tissue labeled with Anti-LMAN1 Polyclonal Antibody, Unconjugated at 1:300 followed by conjugation to the secondary antibody and DAB staining.



Immunohistochemistry (Paraffin-embedded Sections)

Image 2. Formalin-fixed and paraffin embedded human kidney labeled with Anti-LMAN1 Polyclonal Antibody Polyclonal Antibody, Unconjugated at 1:300 followed by conjugation to the secondary antibody and DAB staining.



Immunohistochemistry (Paraffin-embedded Sections)

Image 3. Formalin-fixed and paraffin embedded human prostate tissue labeled with Anti-LMAN1 Polyclonal Antibody, Unconjugated at 1:300 followed by conjugation to the secondary antibody and DAB staining.