

Datasheet for ABIN2559555
anti-Nephrin antibody (pTyr1217)



[Go to Product page](#)

1 Image

Overview

Quantity:	100 µL
Target:	Nephrin (NPHS1)
Binding Specificity:	pTyr1217
Reactivity:	Human
Host:	Rabbit
Clonality:	Polyclonal
Conjugate:	This Nephrin antibody is un-conjugated
Application:	Western Blotting (WB), ELISA, Immunohistochemistry (Paraffin-embedded Sections) (IHC (p))

Product Details

Immunogen:	KLH conjugated synthetic phosphopeptide derived from human Nephrin around the phosphorylation site of Tyr1217.
Isotype:	IgG
Specificity:	This phosphorylation site is homologous to that of Tyr1232 in Mouse and Tyr1228 Rat.
Cross-Reactivity:	Human
Predicted Reactivity:	Mouse,Rat
Purification:	Purified by Protein A.

Target Details

Target:	Nephrin (NPHS1)
---------	-----------------

Target Details

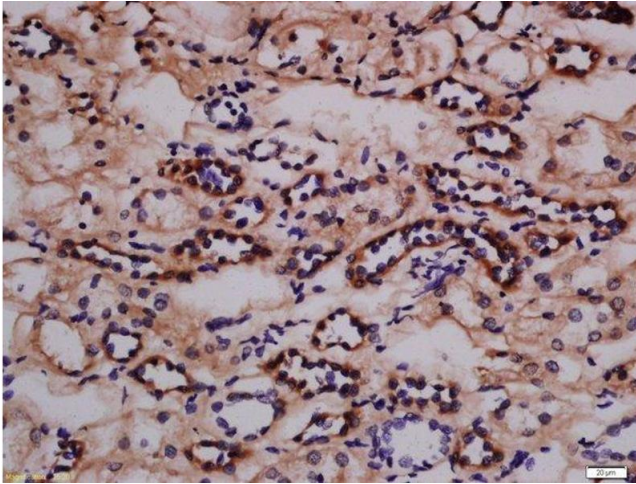
Alternative Name:	Nephrin (NPHS1 Products)
Background:	Synonyms: CNF, NPHN, nephrin, Renal glomerulus-specific cell adhesion receptor, NPHS1 Background: Seems to play a role in the development or function of the kidney glomerular filtration barrier. Regulates glomerular vascular permeability. May anchor the podocyte slit diaphragm to the actin cytoskeleton. Plays a role in skeletal muscle formation through regulation of myoblast fusion (By similarity).
Gene ID:	4868
UniProt:	O60500
Pathways:	Regulation of Actin Filament Polymerization , Skeletal Muscle Fiber Development

Application Details

Application Notes:	WB 1:300-5000 ELISA 1:500-1000 IHC-P 1:200-400
Restrictions:	For Research Use only

Handling

Format:	Liquid
Concentration:	1 µg/µL
Buffer:	0.01M TBS(pH 7.4) with 1 % BSA, 0.02 % Proclin300 and 50 % Glycerol.
Preservative:	ProClin
Precaution of Use:	This product contains ProClin: a POISONOUS AND HAZARDOUS SUBSTANCE, which should be handled by trained staff only.
Storage:	4 °C,-20 °C
Storage Comment:	Shipped at 4°C. Store at -20°C for one year. Avoid repeated freeze/thaw cycles.
Expiry Date:	12 months



Immunohistochemistry (Paraffin-embedded Sections)

Image 1. Formalin-fixed and paraffin embedded human kidney labeled with Anti-Nephrin (Tyr1217) Polyclonal Antibody, Unconjugated at 1:300 followed by conjugation to the secondary antibody and DAB staining.