

Datasheet for ABIN2559562
anti-ATG101 antibody (AA 121-218)



[Go to Product page](#)

4 Images

Overview

Quantity:	100 µL
Target:	ATG101 (C12orf44)
Binding Specificity:	AA 121-218
Reactivity:	Human
Host:	Rabbit
Clonality:	Polyclonal
Conjugate:	This ATG101 antibody is un-conjugated
Application:	Western Blotting (WB), Immunofluorescence (Cultured Cells) (IF (cc)), Immunofluorescence (Paraffin-embedded Sections) (IF (p)), ELISA, Immunohistochemistry (Paraffin-embedded Sections) (IHC (p)), Immunohistochemistry (Frozen Sections) (IHC (fro)), Immunocytochemistry (ICC)

Product Details

Immunogen:	KLH conjugated synthetic peptide derived from human ATG101
Isotype:	IgG
Cross-Reactivity:	Human
Predicted Reactivity:	Mouse,Rat,Cow,Horse,Chicken,Rabbit
Purification:	Purified by Protein A.

Target Details

Target:	ATG101 (C12orf44)
---------	-------------------

Target Details

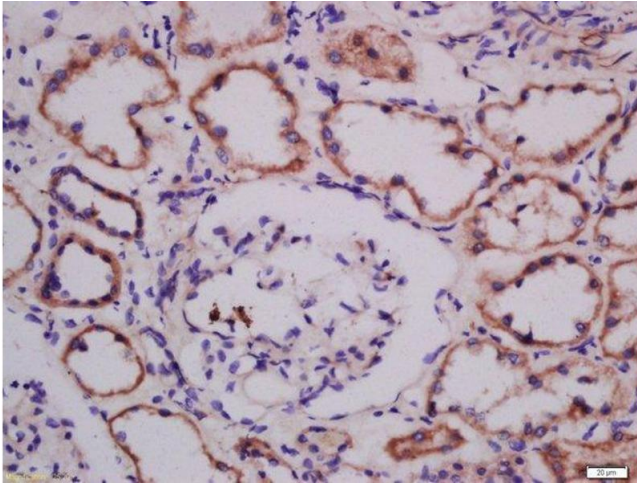
Alternative Name:	ATG101 (C12orf44 Products)
Background:	Synonyms: C12orf44, Autophagy-related protein 101, ATG101, PP894 Background: Autophagy factor required for autophagosome formation. Stabilizes ATG13, protecting it from proteasomal degradation.
Gene ID:	60673
UniProt:	Q9BSB4
Pathways:	Autophagy

Application Details

Application Notes:	WB 1:300-5000 ELISA 1:500-1000 IHC-P 1:200-400 IHC-F 1:100-500 IF(IHC-P) 1:50-200 IF(IHC-F) 1:50-200 IF(ICC) 1:50-200 ICC 1:100-500
Restrictions:	For Research Use only

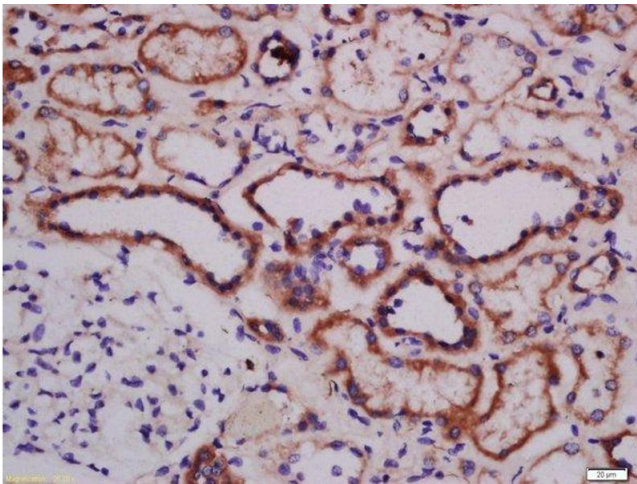
Handling

Format:	Liquid
Concentration:	1 µg/µL
Buffer:	0.01M TBS(pH 7.4) with 1 % BSA, 0.02 % Proclin300 and 50 % Glycerol.
Preservative:	ProClin
Precaution of Use:	This product contains ProClin: a POISONOUS AND HAZARDOUS SUBSTANCE, which should be handled by trained staff only.
Storage:	4 °C,-20 °C
Storage Comment:	Shipped at 4°C. Store at -20°C for one year. Avoid repeated freeze/thaw cycles.
Expiry Date:	12 months



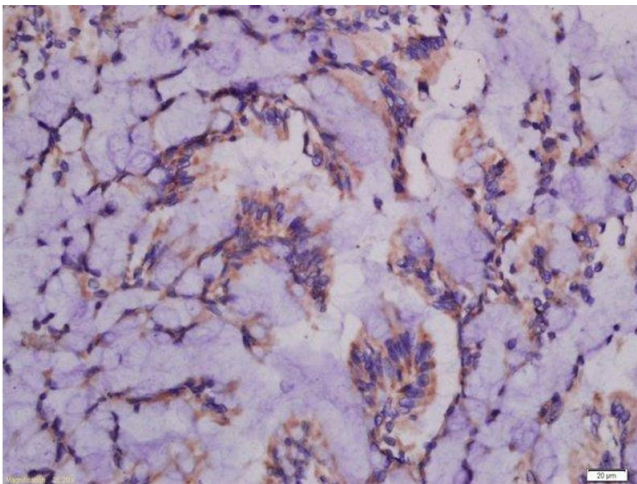
Immunohistochemistry (Paraffin-embedded Sections)

Image 1. Formalin-fixed and paraffin embedded human kidney labeled with Anti-ATG101 Polyclonal Antibody, Unconjugated at 1:300 followed by conjugation to the secondary antibody and DAB staining.



Immunohistochemistry (Paraffin-embedded Sections)

Image 2. Formalin-fixed and paraffin embedded human kidney labeled with Anti-ATG101 Polyclonal Antibody, Unconjugated at 1:300 followed by conjugation to the secondary antibody and DAB staining.



Immunohistochemistry (Paraffin-embedded Sections)

Image 3. Formalin-fixed and paraffin embedded rat intestine labeled with Anti-ATG101 Polyclonal Antibody, Unconjugated at 1:300 followed by conjugation to the secondary antibody and DAB staining.

Please check the [product details page](#) for more images. Overall 4 images are available for ABIN2559562.