



[Go to Product page](#)

Datasheet for ABIN2559624  
**anti-ELP4 antibody (AA 321-424)**

1 Image

Overview

Quantity:	100 µL
Target:	ELP4
Binding Specificity:	AA 321-424
Reactivity:	Human, Mouse, Rat
Host:	Rabbit
Clonality:	Polyclonal
Conjugate:	This ELP4 antibody is un-conjugated
Application:	Western Blotting (WB), ELISA, Immunofluorescence (Cultured Cells) (IF (cc)), Immunofluorescence (Paraffin-embedded Sections) (IF (p)), Immunocytochemistry (ICC), Immunohistochemistry (Paraffin-embedded Sections) (IHC (p)), Immunohistochemistry (Frozen Sections) (IHC (fro))

Product Details

Immunogen:	KLH conjugated synthetic peptide derived from human ELP4
Isotype:	IgG
Cross-Reactivity:	Human, Mouse, Rat
Predicted Reactivity:	Rabbit
Purification:	Purified by Protein A.

Target Details

Target:	ELP4
---------	------

## Target Details

---

Alternative Name:	ELP4 ( <a href="#">ELP4 Products</a> )
Background:	<p>Synonyms: AN, hELP4, PAXNEB, PAX6NEB, C11orf19, dJ68P15A.1, Elongator complex protein 4, PAX6 neighbor gene protein, ELP4</p> <p>Background: Acts as subunit of the RNA polymerase II elongator complex, which is a histone acetyltransferase component of the RNA polymerase II (Pol II) holoenzyme and is involved in transcriptional elongation. Elongator may play a role in chromatin remodeling and is involved in acetylation of histones H3 and probably H4.</p>
Gene ID:	26610
UniProt:	<a href="#">Q96EB1</a>

## Application Details

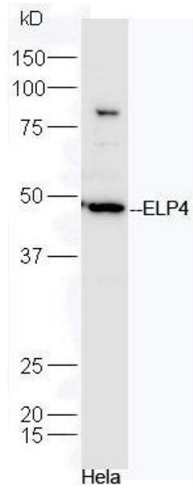
---

Application Notes:	<p>WB 1:300-5000</p> <p>ELISA 1:500-1000</p> <p>IHC-P 1:200-400</p> <p>IHC-F 1:100-500</p> <p>IF(IHC-P) 1:50-200</p> <p>IF(IHC-F) 1:50-200</p> <p>IF(ICC) 1:50-200</p> <p>ICC 1:100-500</p>
Restrictions:	For Research Use only

## Handling

---

Format:	Liquid
Concentration:	1 µg/µL
Buffer:	0.01M TBS( pH 7.4) with 1 % BSA, 0.02 % Proclin300 and 50 % Glycerol.
Preservative:	ProClin
Precaution of Use:	This product contains ProClin: a POISONOUS AND HAZARDOUS SUBSTANCE, which should be handled by trained staff only.
Storage:	4 °C,-20 °C
Storage Comment:	Shipped at 4°C. Store at -20°C for one year. Avoid repeated freeze/thaw cycles.
Expiry Date:	12 months



### Western Blotting

**Image 1.** HeLa cell lysates probed with Rabbit Anti-ELP4 Polyclonal Antibody, Unconjugated (ABIN2559624) at 1:300 in 4°C. Followed by conjugation to secondary antibody at 1:5000 for 90min at 37°C.