

Datasheet for ABIN2559633
anti-KLF11 antibody (AA 21-120)[Go to Product page](#)

1 Image

Overview

Quantity:	100 µL
Target:	KLF11
Binding Specificity:	AA 21-120
Reactivity:	Mouse, Rat
Host:	Rabbit
Clonality:	Polyclonal
Conjugate:	This KLF11 antibody is un-conjugated
Application:	Western Blotting (WB), ELISA, Immunohistochemistry (Paraffin-embedded Sections) (IHC (p)), Immunofluorescence (Cultured Cells) (IF (cc)), Immunofluorescence (Paraffin-embedded Sections) (IF (p)), Immunocytochemistry (ICC), Immunohistochemistry (Frozen Sections) (IHC (fro))

Product Details

Immunogen:	KLH conjugated synthetic peptide derived from human FKLF
Isotype:	IgG
Cross-Reactivity:	Mouse, Rat
Predicted Reactivity:	Human,Dog,Cow,Sheep,Horse
Purification:	Purified by Protein A.

Target Details

Target:	KLF11
---------	-------

Target Details

Alternative Name:	FKLF (KLF11 Products)
Background:	<p>Synonyms: FKLF, FKLF1, MODY7, TIEG2, Tieg3, Krueppel-like factor 11, Transforming growth factor-beta-inducible early growth response protein 2, TGFB-inducible early growth response protein 2, TIEG-2, KLF11</p> <p>Background: Transcription factor. Activates the epsilon- and gamma-globin gene promoters and, to a much lower degree, the beta-globin gene and represses promoters containing SP1-like binding inhibiting cell growth. Represses transcription of SMAD7 which enhances TGF-beta signaling. Induces apoptosis.</p>
Gene ID:	8462
UniProt:	O14901

Application Details

Application Notes:	WB 1:300-5000 ELISA 1:500-1000 IHC-P 1:200-400 IHC-F 1:100-500 IF(IHC-P) 1:50-200 IF(IHC-F) 1:50-200 IF(ICC) 1:50-200 ICC 1:100-500
Restrictions:	For Research Use only

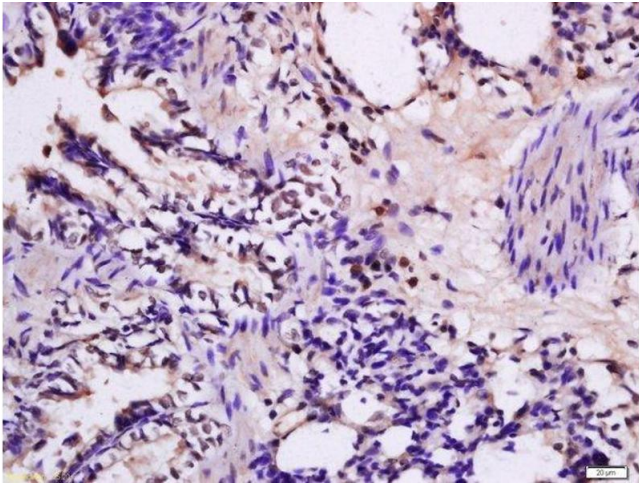
Handling

Format:	Liquid
Concentration:	1 µg/µL
Buffer:	0.01M TBS(pH 7.4) with 1 % BSA, 0.02 % Proclin300 and 50 % Glycerol.
Preservative:	ProClin
Precaution of Use:	This product contains ProClin: a POISONOUS AND HAZARDOUS SUBSTANCE, which should be handled by trained staff only.
Storage:	4 °C,-20 °C
Storage Comment:	Shipped at 4°C. Store at -20°C for one year. Avoid repeated freeze/thaw cycles.

Handling

Expiry Date: 12 months

Images



Immunohistochemistry (Paraffin-embedded Sections)

Image 1. Formalin-fixed and paraffin embedded rat lung tissue labeled with Rabbit Anti-FKLF Polyclonal Antibody, Unconjugated (ABIN2559633) at 1:200 followed by conjugation to the secondary antibody and DAB staining