

Datasheet for ABIN2559658
anti-SLC29A2 antibody (AA 221-320)[Go to Product page](#)

3 Images

Overview

Quantity:	100 µL
Target:	SLC29A2
Binding Specificity:	AA 221-320
Reactivity:	Human, Mouse, Rat
Host:	Rabbit
Clonality:	Polyclonal
Conjugate:	This SLC29A2 antibody is un-conjugated
Application:	Western Blotting (WB), Immunofluorescence (Cultured Cells) (IF (cc)), Immunofluorescence (Paraffin-embedded Sections) (IF (p)), Immunohistochemistry (Paraffin-embedded Sections) (IHC (p)), ELISA, Immunocytochemistry (ICC), Immunohistochemistry (Frozen Sections) (IHC (fro))

Product Details

Immunogen:	KLH conjugated synthetic peptide derived from human ENT2
Isotype:	IgG
Cross-Reactivity:	Human, Mouse, Rat
Purification:	Purified by Protein A.

Target Details

Target:	SLC29A2
Alternative Name:	ENT2 (SLC29A2 Products)

Target Details

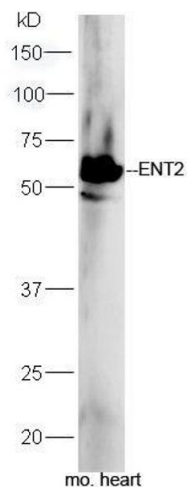
Background:	<p>Synonyms: ENT2, DER12, HNP36, Equilibrative nucleoside transporter 2, 36 kDa nucleolar protein HNP36, Delayed-early response protein 12, Equilibrative nitrobenzylmercaptapurine riboside-insensitive nucleoside transporter, Equilibrative NBMPR-insensitive nucleoside transporter, Hydrophobic nucleolar protein, 36 kDa, Nucleoside transporter, ei-type, Solute carrier family 29 member 2, SLC29A2</p> <p>Background: Mediates equilibrative transport of purine, pyrimidine nucleosides and the purine base hypoxanthine. Very less sensitive than SLC29A1 to inhibition by nitrobenzylthioinosine (NBMPR), dipyridamole, dilazep and draflazine.</p>
Gene ID:	3177
UniProt:	Q14542

Application Details

Application Notes:	<p>WB 1:300-5000</p> <p>ELISA 1:500-1000</p> <p>IHC-P 1:200-400</p> <p>IHC-F 1:100-500</p> <p>IF(IHC-P) 1:50-200</p> <p>IF(IHC-F) 1:50-200</p> <p>IF(ICC) 1:50-200</p> <p>ICC 1:100-500</p>
Restrictions:	For Research Use only

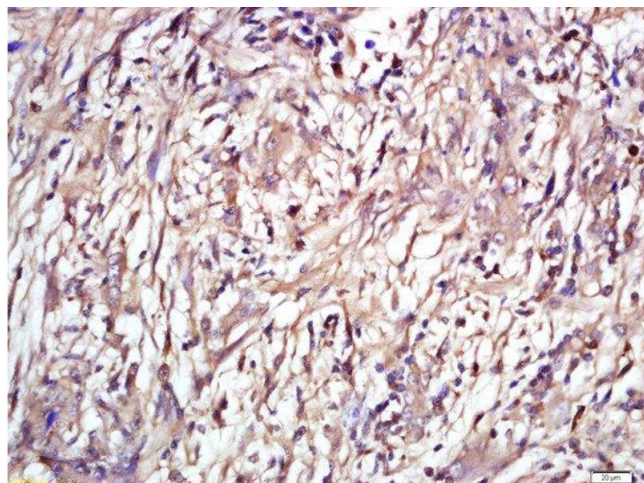
Handling

Format:	Liquid
Concentration:	1 µg/µL
Buffer:	0.01M TBS(pH 7.4) with 1 % BSA, 0.02 % Proclin300 and 50 % Glycerol.
Preservative:	ProClin
Precaution of Use:	This product contains ProClin: a POISONOUS AND HAZARDOUS SUBSTANCE, which should be handled by trained staff only.
Storage:	4 °C,-20 °C
Storage Comment:	Shipped at 4°C. Store at -20°C for one year. Avoid repeated freeze/thaw cycles.



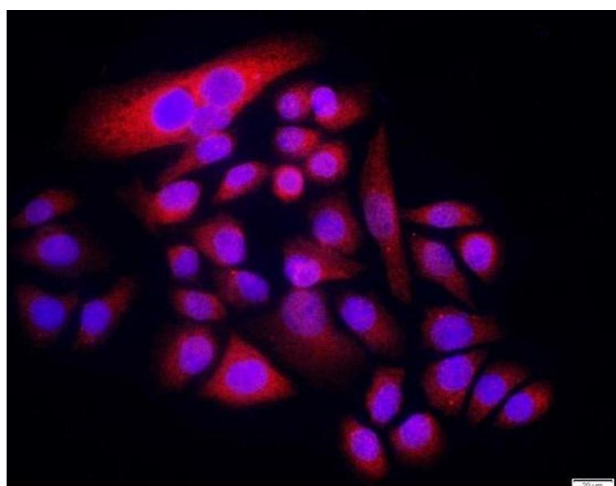
Western Blotting

Image 1. Mouse heart lysates probed with Rabbit Anti-ENT2 Polyclonal Antibody, Unconjugated (ABIN2559658) at 1:300 in 4°C. Followed by conjugation to secondary antibody at 1:5000 for 90min at 37°C.



Immunohistochemistry (Paraffin-embedded Sections)

Image 2. Formalin-fixed and paraffin embedded human laryngeal tissue labeled with Rabbit Anti-ENT2 Polyclonal Antibody, Unconjugated (ABIN2559658) at 1:200 followed by conjugation to the secondary antibody and DAB staining



Immunofluorescence (Cultured Cells)

Image 3. MCF-7 cells were stained with ENT2 Polyclonal Antibody, Unconjugated at 1:500 in PBS and incubated for two hours at 37°C followed by Goat Anti-Rabbit IgG (H+L) Cy3 conjugated secondary antibody. DAPI staining of the nucleus was done and then detected.