

Datasheet for ABIN2559699
anti-CILP antibody (AA 1051-1184)[Go to Product page](#)

1 Image

Overview

Quantity:	100 µL
Target:	CILP
Binding Specificity:	AA 1051-1184
Reactivity:	Human, Rat
Host:	Rabbit
Clonality:	Polyclonal
Conjugate:	This CILP antibody is un-conjugated
Application:	Western Blotting (WB), ELISA, Flow Cytometry (FACS), Immunocytochemistry (ICC), Immunofluorescence (Cultured Cells) (IF (cc)), Immunofluorescence (Paraffin-embedded Sections) (IF (p)), Immunohistochemistry (Frozen Sections) (IHC (fro)), Immunohistochemistry (Paraffin-embedded Sections) (IHC (p))

Product Details

Immunogen:	KLH conjugated synthetic peptide derived from human CILP
Isotype:	IgG
Specificity:	The immunogen falls within the Cartilage intermediate layer protein 1 C2 region.
Cross-Reactivity:	Human, Rat
Predicted Reactivity:	Mouse,Cow,Sheep,Horse
Purification:	Purified by Protein A.

Target Details

Target:	CILP
Alternative Name:	CILP (CILP Products)
Background:	<p>Synonyms: CILP-1, HsT18872, Cartilage intermediate layer protein 1, Cartilage intermediate-layer protein, CILP, UNQ602/PRO1188</p> <p>Background: Probably plays a role in cartilage scaffolding. May act by antagonizing TGF-beta1 (TGFB1) and IGF1 functions. Has the ability to suppress IGF1-induced proliferation and sulfated proteoglycan synthesis, and inhibits ligand-induced IGF1R autophosphorylation. May inhibit TGFB1-mediated induction of cartilage matrix genes via its interaction with TGFB1.</p> <p>Overexpression may lead to impair chondrocyte growth and matrix repair and indirectly promote inorganic pyrophosphate (PPi) supersaturation in aging and osteoarthritis cartilage.</p>
Gene ID:	8483
UniProt:	O75339

Application Details

Application Notes:	<p>WB 1:300-5000</p> <p>ELISA 1:500-1000</p> <p>FCM 1:20-100</p> <p>IHC-P 1:200-400</p> <p>IHC-F 1:100-500</p> <p>IF(IHC-P) 1:50-200</p> <p>IF(IHC-F) 1:50-200</p> <p>IF(ICC) 1:50-200</p> <p>ICC 1:100-500</p>
Restrictions:	For Research Use only

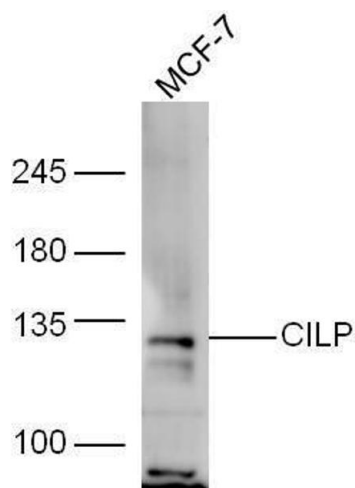
Handling

Format:	Liquid
Concentration:	1 µg/µL
Buffer:	0.01M TBS(pH 7.4) with 1 % BSA, 0.02 % Proclin300 and 50 % Glycerol.
Preservative:	ProClin
Precaution of Use:	This product contains ProClin: a POISONOUS AND HAZARDOUS SUBSTANCE, which should be handled by trained staff only.

Handling

Storage:	4 °C,-20 °C
Storage Comment:	Shipped at 4°C. Store at -20°C for one year. Avoid repeated freeze/thaw cycles.
Expiry Date:	12 months

Images



Western Blotting

Image 1. MCF-7 lysate probed with Rabbit Anti-CILP Polyclonal Antibody, Unconjugated at 1:5000 for 90min at 37°C.