

Datasheet for ABIN2559702  
**anti-CTDSP2 antibody (AA 25-150)**

## 3 Images

[Go to Product page](#)

## Overview

Quantity:	100 µL
Target:	CTDSP2
Binding Specificity:	AA 25-150
Reactivity:	Human, Rat
Host:	Rabbit
Clonality:	Polyclonal
Conjugate:	This CTDSP2 antibody is un-conjugated
Application:	ELISA, Flow Cytometry (FACS), Immunofluorescence (Cultured Cells) (IF (cc)), Immunofluorescence (Paraffin-embedded Sections) (IF (p)), Immunohistochemistry (Paraffin-embedded Sections) (IHC (p)), Immunohistochemistry (Frozen Sections) (IHC (fro)), Immunocytochemistry (ICC)

## Product Details

Immunogen:	KLH conjugated synthetic peptide derived from human CTDSP2
Isotype:	IgG
Cross-Reactivity:	Human, Rat
Predicted Reactivity:	Mouse,Cow,Sheep,Pig,Horse,Rabbit
Purification:	Purified by Protein A.

## Target Details

Target:	CTDSP2
---------	--------

## Target Details

Alternative Name:	CTDSP2 ( <a href="#">CTDSP2 Products</a> )
Background:	<p>Synonyms: OS4, PSR2, SCP2, Carboxy-terminal domain RNA polymerase II polypeptide A small phosphatase 2, Nuclear LIM interactor-interacting factor 2, NLI-interacting factor 2, Protein OS-4, Small C-terminal domain phosphatase 2, Small CTD phosphatase 2, CTDSP2, NIF2</p> <p>Background: Preferentially catalyzes the dephosphorylation of 'Ser-5' within the tandem 7 residue repeats in the C-terminal domain (CTD) of the largest RNA polymerase II subunit POLR2A. Negatively regulates RNA polymerase II transcription, possibly by controlling the transition from initiation/capping to processive transcript elongation. Recruited by REST to neuronal genes that contain RE-1 elements, leading to neuronal gene silencing in non-neuronal cells. May contribute to the development of sarcomas.</p>
Gene ID:	10106
UniProt:	<a href="#">O14595</a>
Pathways:	<a href="#">ER-Nucleus Signaling</a>

## Application Details

Application Notes:	<p>ELISA 1:500-1000</p> <p>FCM 1:20-100</p> <p>IHC-P 1:200-400</p> <p>IHC-F 1:100-500</p> <p>IF(IHC-P) 1:50-200</p> <p>IF(IHC-F) 1:50-200</p> <p>IF(ICC) 1:50-200</p> <p>ICC 1:100-500</p>
Restrictions:	For Research Use only

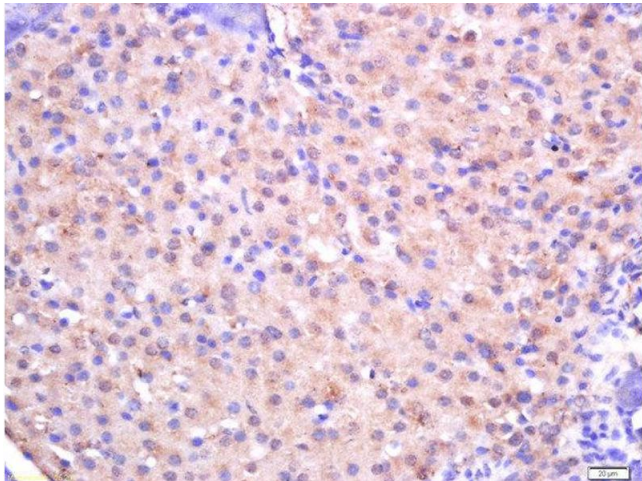
## Handling

Format:	Liquid
Concentration:	1 µg/µL
Buffer:	0.01M TBS( pH 7.4) with 1 % BSA, 0.02 % Proclin300 and 50 % Glycerol.
Preservative:	ProClin
Precaution of Use:	This product contains ProClin: a POISONOUS AND HAZARDOUS SUBSTANCE, which should be handled by trained staff only.

Handling

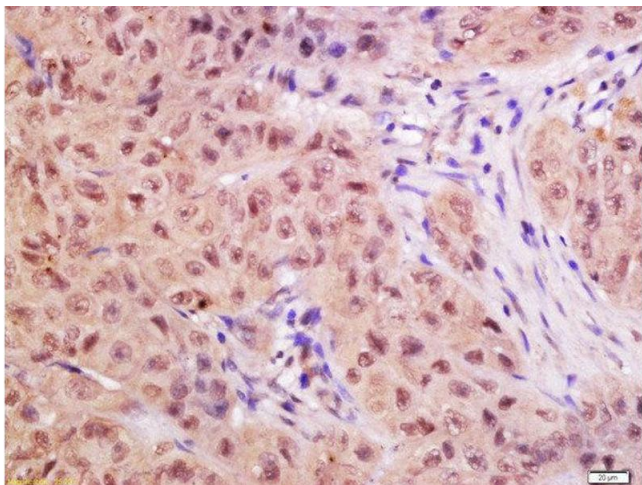
Storage:	4 °C,-20 °C
Storage Comment:	Shipped at 4°C. Store at -20°C for one year. Avoid repeated freeze/thaw cycles.
Expiry Date:	12 months

Images



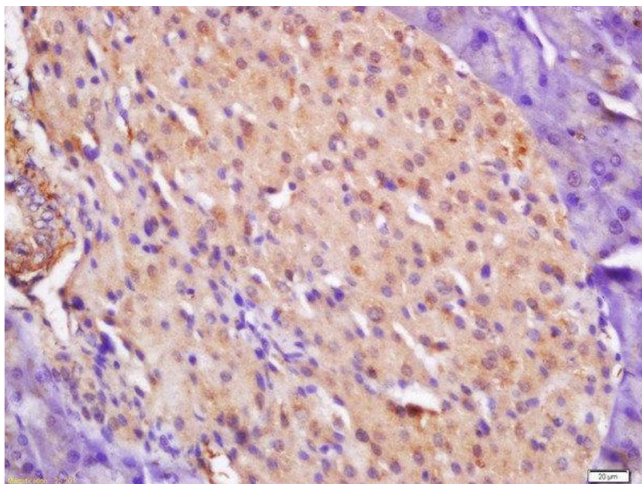
Immunohistochemistry (Paraffin-embedded Sections)

**Image 1.** Formalin-fixed and paraffin embedded rat pancreas tissue labeled with Rabbit Anti-CTDSP2 Polyclonal Antibody, Unconjugated (ABIN2559702) at 1:200 followed by conjugation to the secondary antibody and DAB staining



Immunohistochemistry (Paraffin-embedded Sections)

**Image 2.** Formalin-fixed and paraffin embedded rat pancreas labeled with Anti-CTDSP2 Polyclonal Antibody, Unconjugated at 1:200 followed by conjugation to the secondary antibody and DAB staining.



Immunohistochemistry (Paraffin-embedded Sections)

**Image 3.** Formalin-fixed and paraffin embedded human laryngocarcinoma labeled with Anti-CTDSP2 Polyclonal Antibody, Unconjugated at 1:200 followed by conjugation to the secondary antibody and DAB staining.