



[Go to Product page](#)

Datasheet for ABIN2562850

anti-GLUD1 antibody (Internal Region)

2 Images

Overview

Quantity:	100 µg
Target:	GLUD1
Binding Specificity:	Internal Region
Reactivity:	Human, Mouse, Rat, Cow, Dog
Host:	Goat
Clonality:	Polyclonal
Application:	Western Blotting (WB), Immunohistochemistry (IHC), ELISA, Immunofluorescence (IF)

Product Details

Immunogen:	Internal
Sequence:	ESEEQKRNRV RGILR
Isotype:	IgG
Purification:	Affinity purification

Target Details

Target:	GLUD1
Alternative Name:	Glutamate Dehydrogenase (GLUD1 Products)
Pathways:	Positive Regulation of Peptide Hormone Secretion , Warburg Effect

Application Details

Application Notes: Optimal working dilution should be determined by the investigator.

Restrictions: For Research Use only

Handling

Format: Liquid

Concentration: 0.5 mg/mL

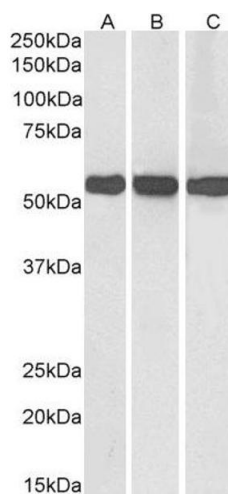
Buffer: 0.5 mg/mL in Tris saline, 0.02 % sodium azide, pH 7.3 with 0.5 % bovine serum albumin. Aliquot and store at -20 °C. Minimize freezing and thawing.

Preservative: Sodium azide

Precaution of Use: This product contains Sodium azide: a POISONOUS AND HAZARDOUS SUBSTANCE which should be handled by trained staff only.

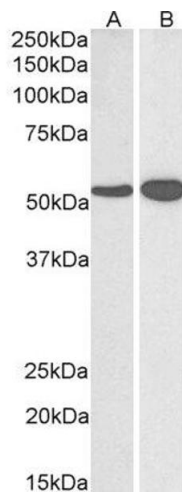
Storage: -20 °C

Images



Western Blotting

Image 1. ABIN2562850 (0.01µg/ml) staining of Human (A), Mouse (B) and Rat (C) Liver lysate (35µg protein in RIPA buffer). Primary incubation was 1 hour. Detected by chemiluminescence.



Western Blotting

Image 2. ABIN2562850 (0.03 μ g/ml) staining of Human (A) and Mouse (B) Brain lysate (35 μ g protein in RIPA buffer). Primary incubation was 1 hour. Detected by chemiluminescence.