



Datasheet for ABIN2563343
anti-IFFO2 antibody



[Go to Product page](#)

1 Image

Overview

Quantity:	100 µL
Target:	IFFO2
Reactivity:	Human, Mouse, Rat
Host:	Rabbit
Clonality:	Polyclonal
Conjugate:	This IFFO2 antibody is un-conjugated
Application:	Western Blotting (WB), Immunohistochemistry (IHC)

Product Details

Isotype:	IgG
Purification:	Affinity purification

Target Details

Target:	IFFO2
Alternative Name:	IFFO2 (IFFO2 Products)
Gene ID:	126917
UniProt:	Q5TF58

Application Details

Application Notes:	WB 1:500-1:2000, IHC 1:50-1:200
--------------------	---------------------------------

Application Details

Restrictions: For Research Use only

Handling

Format: Liquid

Concentration: 1 mg/mL

Buffer: PBS with 0.02 % sodium azide, 50 % glycerol, pH 7.4

Preservative: Sodium azide

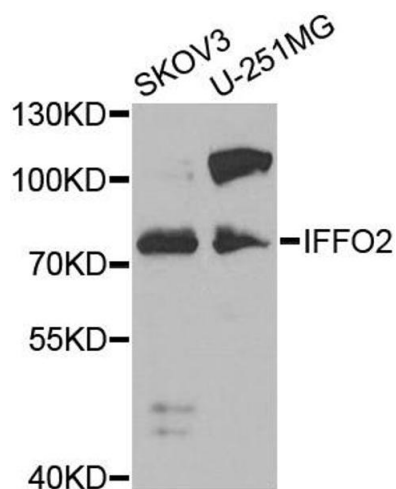
Precaution of Use: This product contains Sodium azide: a POISONOUS AND HAZARDOUS SUBSTANCE which should be handled by trained staff only.

Handling Advice: Avoid repeated freeze/thaw cycles.

Storage: -20 °C

Storage Comment: Store at -20°C.

Images



Western Blotting

Image 1. Western blot analysis of extracts of various cell lines, using IFFO2 antibody (ABIN2563343) at 1:1000 dilution. Secondary antibody: HRP Goat Anti-Rabbit IgG (H+L) at 1:10000 dilution. Lysates/proteins: 25ug per lane. Blocking buffer: 3% nonfat dry milk in TBST. Detection: ECL Basic Kit. Exposure time: 90s.