



[Go to Product page](#)

Datasheet for ABIN2564701

anti-Prefoldin-Like antibody (C-Term)

1 Image

Overview

Quantity:	100 µg
Target:	Prefoldin-Like (LOC100166573)
Binding Specificity:	C-Term
Reactivity:	Human, Cow, Dog, Mouse, Rat
Host:	Goat
Clonality:	Polyclonal
Conjugate:	This Prefoldin-Like antibody is un-conjugated
Application:	ELISA, Western Blotting (WB)

Product Details

Immunogen:	C-terminal
Sequence:	DNIREMLMAR RAQ
Isotype:	IgG
Purification:	Affinity purification

Target Details

Target:	Prefoldin-Like (LOC100166573)
Alternative Name:	Prefoldin (LOC100166573 Products)

Application Details

Application Notes: Optimal working dilution should be determined by the investigator.

Restrictions: For Research Use only

Handling

Format: Liquid

Concentration: 0.5 mg/mL

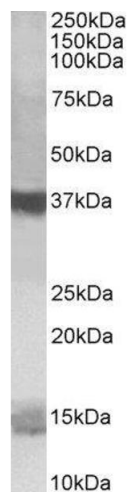
Buffer: 0.5 mg/mL in Tris saline, 0.02 % sodium azide, pH 7.3 with 0.5 % bovine serum albumin. Aliquot and store at -20 °C. Minimize freezing and thawing.

Preservative: Sodium azide

Precaution of Use: This product contains Sodium azide: a POISONOUS AND HAZARDOUS SUBSTANCE which should be handled by trained staff only.

Storage: -20 °C

Images



Western Blotting

Image 1. ABIN2564701 (1µg/ml) staining of K562 lysate (35µg protein in RIPA buffer). Primary incubation was 1 hour. Detected by chemiluminescence.