



[Go to Product page](#)

Datasheet for ABIN2565087

Integrin Alpha2b Protein (CD41) (AA 504-602) (GST tag)

1 Image

Overview

| | |
|-------------------------------|---|
| Quantity: | 10 µg |
| Target: | Integrin Alpha2b (CD41) |
| Protein Characteristics: | AA 504-602 |
| Origin: | Human |
| Source: | Wheat germ |
| Protein Type: | Recombinant |
| Purification tag / Conjugate: | This Integrin Alpha2b protein is labelled with GST tag. |
| Application: | Western Blotting (WB), ELISA, Antibody Array (AA), Affinity Purification (AP) |

Product Details

| | |
|------------------|---|
| Purpose: | ITGA2B (Human) Recombinant Protein (Q01) |
| Sequence: | CVLPQTKTPV SCFNIQMCVG ATGHNIPQKL SLNAELQLDR QKPRQGRRVL LLGSQQAGTT LNLDLGGKHS PICHTTMAFL RDEADFRDKL SPIVLSLNV |
| Characteristics: | Human ITGA2B partial ORF (NP_000410.2, 504 a.a. - 602 a.a.) recombinant protein with GST tag at N-terminal. |
| Purification: | in vitro wheat germ expression system |

Target Details

| | |
|-------------------|--|
| Target: | Integrin Alpha2b (CD41) |
| Alternative Name: | ITGA2B (CD41 Products) |

Target Details

| | |
|-----------------|--|
| Background: | Full Gene Name: integrin, alpha 2b (platelet glycoprotein IIb of IIb/IIIa complex, antigen CD41) Synonyms: CD41,CD41B,GP2B,GPIIb,GTA,HPA3 |
| Gene ID: | 3674 |
| NCBI Accession: | NM_000419 |
| Pathways: | Integrin Complex |

Application Details

| | |
|--------------------|---|
| Application Notes: | Optimal working dilution should be determined by the investigator. |
| Comment: | Preparation method: in vitro, wheat germ expression system Product Quality tested by: 12.5% SDS-PAGE Stained with Coomassie Blue |
| Restrictions: | For Research Use only |

Handling

| | |
|------------------|---|
| Buffer: | 50 mM Tris-HCl, 10 mM reduced Glutathione, pH =8.0 in the elution buffer. |
| Handling Advice: | Aliquot to avoid repeated freezing and thawing. |
| Storage: | -80 °C |
| Storage Comment: | Best use within three months from the date of receipt of this protein. |

Images

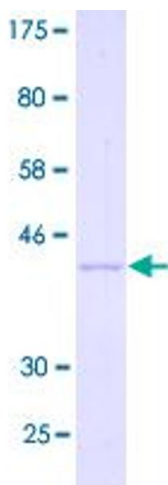


Image 1.