



[Go to Product page](#)

Datasheet for ABIN2565109

ASCL1 Protein (AA 76-170) (GST tag)

1 Image

Overview

Quantity:	10 µg
Target:	ASCL1
Protein Characteristics:	AA 76-170
Origin:	Human
Source:	Wheat germ
Protein Type:	Recombinant
Purification tag / Conjugate:	This ASCL1 protein is labelled with GST tag.
Application:	ELISA, Western Blotting (WB), Antibody Array (AA), Affinity Purification (AP)

Product Details

Purpose:	ASCL1 (Human) Recombinant Protein (Q03)
Sequence:	GGGHKSAPKQ VKRQRSSSPE LMRCKRRLNF SGFGYSLPQQ QPAAVARRNE RERNRVKLVN LGFATLREHV PNGAANKKMS KVETLRSVAE YIRAL
Characteristics:	Human ASCL1 partial ORF (NP_004307.2, 76 a.a. - 170 a.a.) recombinant protein with GST tag at N-terminal.
Purification:	in vitro wheat germ expression system

Target Details

Target:	ASCL1
Alternative Name:	ASCL1 (ASCL1 Products)

Target Details

Background:	Full Gene Name: achaete-scute complex homolog 1 (Drosophila) Synonyms: ASH1,HASH1,MASH1,bHLHa46
Gene ID:	429
NCBI Accession:	NM_004316
Pathways:	Dopaminergic Neurogenesis

Application Details

Application Notes:	Optimal working dilution should be determined by the investigator.
Comment:	Preparation method: in vitro, wheat germ expression system Product Quality tested by: 12.5% SDS-PAGE Stained with Coomassie Blue
Restrictions:	For Research Use only

Handling

Buffer:	50 mM Tris-HCl, 10 mM reduced Glutathione, pH =8.0 in the elution buffer.
Handling Advice:	Aliquot to avoid repeated freezing and thawing.
Storage:	-80 °C
Storage Comment:	Best use within three months from the date of receipt of this protein.

Images

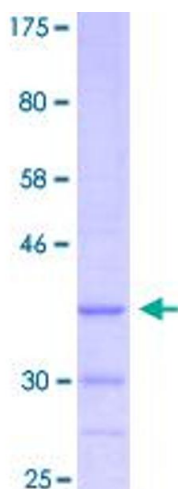


Image 1.