



[Go to Product page](#)

Datasheet for ABIN2565148

RFPL2 Protein (AA 1-288) (GST tag)

1 Image

Overview

Quantity:	25 µg
Target:	RFPL2
Protein Characteristics:	AA 1-288
Origin:	Human
Source:	Wheat germ
Protein Type:	Recombinant
Purification tag / Conjugate:	This RFPL2 protein is labelled with GST tag.
Application:	ELISA, Western Blotting (WB), Antibody Array (AA), Affinity Purification (AP)

Product Details

Purpose:	RFPL2 (Human) Recombinant Protein (P02)
Sequence:	MAALFQEASS CPVCS DYLEK PMSLECGCAV CLKCINSLQK EPHGEDLLCC YSSMVS RKNK IRRN RQLERL ASHIKELEPK LKKILQMNPR MRKFQVDMTL DANTANNFLL ISDDLRSVRS GRIRQNRQDL AERFDVSVCI LGSPRFTCGR HCWEVDVGTS TEWDLGVCRE SVHRKGRIQL TTELGFWTVS LRDGGRLSAS TVPLTFLFVD RKLQRVGIFL DMGMQNVSFF DAEGGSHVYT FRSVSAEEPL CPFLAPSIPP NGDQGVLSIC PLMNSGTTDA PVRPGEAK
Characteristics:	Human RFPL2 full-length ORF (CAK54594.1, 1 a.a. - 288 a.a.) recombinant protein with GST-tag at N-terminal.
Purification:	in vitro wheat germ expression system

Target Details

Target:	RFPL2
Alternative Name:	RFPL2 (RFPL2 Products)
Background:	Full Gene Name: ret finger protein-like 2 Synonyms: RNF79
Gene ID:	10739

Application Details

Application Notes:	Optimal working dilution should be determined by the investigator.
Comment:	Preparation method: in vitro, wheat germ expression system Product Quality tested by: 12.5% SDS-PAGE Stained with Coomassie Blue.
Restrictions:	For Research Use only

Handling

Buffer:	50 mM Tris-HCl, 10 mM reduced Glutathione, pH =8.0 in the elution buffer.
Handling Advice:	Aliquot to avoid repeated freezing and thawing.
Storage:	-80 °C
Storage Comment:	Best use within three months from the date of receipt of this protein.

Images

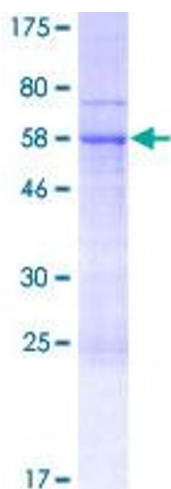


Image 1.