

Datasheet for ABIN2565165

## EPH Receptor A4 Protein (EPHA4) (AA 1-105) (GST tag)



[Go to Product page](#)

### 1 Image

#### Overview

Quantity:	10 µg
Target:	EPH Receptor A4 (EPHA4)
Protein Characteristics:	AA 1-105
Origin:	Human
Source:	Wheat germ
Protein Type:	Recombinant
Purification tag / Conjugate:	This EPH Receptor A4 protein is labelled with GST tag.
Application:	Western Blotting (WB), ELISA, Antibody Array (AA), Affinity Purification (AP)

#### Product Details

Purpose:	EPHA4 (Human) Recombinant Protein (P01)
Sequence:	MCVHRCEVC MRACLCAGVC MCIASCLGLP MNVVECYSYWR VLVFHQFQDE ELHDTVLDLET IPLERQPRDV QHPVSTRILY LHVYFVAVTL TLIRILQLWT EAFSP
Characteristics:	Human EPHA4 full-length ORF (no protein_acc, 1 a.a. - 105 a.a.) recombinant protein with GST tag at N-terminal.
Purification:	in vitro wheat germ expression system

#### Target Details

Target:	EPH Receptor A4 (EPHA4)
Alternative Name:	EPHA4 ( <a href="#">EPHA4 Products</a> )

## Target Details

Background: Full Gene Name: EPH receptor A4  
Synonyms: HEK8,SEK,TYRO1

Gene ID: 2043

Pathways: [RTK Signaling](#)

## Application Details

Application Notes: Optimal working dilution should be determined by the investigator.

Comment: Preparation method: in vitro, wheat germ expression system  
Product Quality tested by: 12.5% SDS-PAGE Stained with Coomassie Blue

Restrictions: For Research Use only

## Handling

Buffer: 50 mM Tris-HCl, 10 mM reduced Glutathione, pH =8.0 in the elution buffer.

Handling Advice: Aliquot to avoid repeated freezing and thawing.

Storage: -80 °C

Storage Comment: Best use within three months from the date of receipt of this protein.

## Images

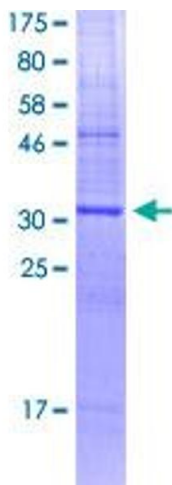


Image 1.