

Datasheet for ABIN2565240
CCR1 Protein (AA 256-355) (GST tag)



[Go to Product page](#)

1 Image

Overview

Quantity:	10 µg
Target:	CCR1
Protein Characteristics:	AA 256-355
Origin:	Human
Source:	Wheat germ
Protein Type:	Recombinant
Purification tag / Conjugate:	This CCR1 protein is labelled with GST tag.
Application:	Western Blotting (WB), ELISA, Affinity Purification (AP), Antibody Array (AA)

Product Details

Purpose:	CCR1 (Human) Recombinant Protein (Q01)
Sequence:	NLTILISVFQ DFLFTHCEEQ SRHLDLAVQV TEVIAYTHCC VNPVIYAFVG ERFRKYLRQL FHRRVAVHLV KWLPFLSVDR LERVSSTSPS TGEHELSAGF
Characteristics:	Human CCR1 partial ORF (NP_001286.1, 256 a.a. - 355 a.a.) recombinant protein with GST tag at N-terminal.
Purification:	in vitro wheat germ expression system

Target Details

Target:	CCR1
Alternative Name:	CCR1 (CCR1 Products)

Target Details

Background:	Full Gene Name: chemokine (C-C motif) receptor 1 Synonyms: CD191,CKR-1,CKR1,CMKBR1,HM145,MIP1aR,SCYAR1
Gene ID:	1230
NCBI Accession:	NM_001295

Application Details

Application Notes:	Optimal working dilution should be determined by the investigator.
Comment:	Preparation method: in vitro, wheat germ expression system Product Quality tested by: 12.5% SDS-PAGE Stained with Coomassie Blue
Restrictions:	For Research Use only

Handling

Buffer:	50 mM Tris-HCl, 10 mM reduced Glutathione, pH =8.0 in the elution buffer.
Handling Advice:	Aliquot to avoid repeated freezing and thawing.
Storage:	-80 °C
Storage Comment:	Best use within three months from the date of receipt of this protein.

Images

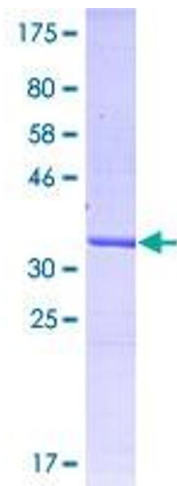


Image 1.