

Datasheet for ABIN2565277

**FOXF2 Protein (AA 346-443) (GST tag)**[Go to Product page](#)**1** Image

## Overview

Quantity:	10 µg
Target:	FOXF2
Protein Characteristics:	AA 346-443
Origin:	Human
Source:	Wheat germ
Protein Type:	Recombinant
Purification tag / Conjugate:	This FOXF2 protein is labelled with GST tag.
Application:	Western Blotting (WB), ELISA, Antibody Array (AA), Affinity Purification (AP)

## Product Details

Purpose:	FOXF2 (Human) Recombinant Protein (Q01)
Sequence:	SPYLKQPPAL TPSSNPAASA GLHSSMSSYS LEQSYLHQNA REDLSVGLPR YQHHSTPVCD RKDFVLNFNG ISSFHPSASG SYYHHHHQSV CQDIKPCV
Characteristics:	Human FOXF2 partial ORF (NP_001443.1, 346 a.a. - 443 a.a.) recombinant protein with GST tag at N-terminal.
Purification:	in vitro wheat germ expression system

## Target Details

Target:	FOXF2
Alternative Name:	FOXF2 ( <a href="#">FOXF2 Products</a> )

## Target Details

Background: Full Gene Name: forkhead box F2  
Synonyms: FKHL6,FREAC2

Gene ID: 2295

NCBI Accession: [NM\\_001452](#)

## Application Details

Application Notes: Optimal working dilution should be determined by the investigator.

Comment: Preparation method: in vitro, wheat germ expression system  
Product Quality tested by: 12.5% SDS-PAGE Stained with Coomassie Blue

Restrictions: For Research Use only

## Handling

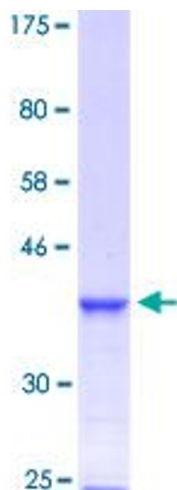
Buffer: 50 mM Tris-HCl, 10 mM reduced Glutathione, pH =8.0 in the elution buffer.

Handling Advice: Aliquot to avoid repeated freezing and thawing.

Storage: -80 °C

Storage Comment: Best use within three months from the date of receipt of this protein.

## Images



**Image 1.**