

Datasheet for ABIN2565338

ALPL (Human) IP-WB Antibody Pair



[Go to Product page](#)

1 Image

Overview

Quantity:	1 set
Target:	ALPL
Reactivity:	Human
Host:	Rabbit, Mouse
Application:	Immunoprecipitation (IP)

Product Details

Purpose:	This IP-WB antibody pair set comes with one antibody for immunoprecipitation and another to detect the precipitated protein in western blot.
Cross-Reactivity:	Human
Characteristics:	This IP-WB antibody pair set comes with one antibody for immunoprecipitation and another to detect the precipitated protein in western blot.
Components:	<p>Antibody pair set content:</p> <ol style="list-style-type: none"> 1. Antibody pair for IP: rabbit purified polyclonal anti-ALPL (300 µg) 2. Antibody pair for WB: mouse purified polyclonal anti-ALPL (50 µg)

Target Details

Target:	ALPL
Alternative Name:	ALPL (ALPL Products)
Background:	<p>Full Gene Name: alkaline phosphatase, liver/bone/kidney</p> <p>Synonyms: AP-TNAP,FLJ40094,FLJ93059,HOPS,MGC161443,MGC167935,TNAP,TNSALP</p>

Target Details

Gene ID: 249

Application Details

Application Notes: Optimal working dilution should be determined by the investigator.

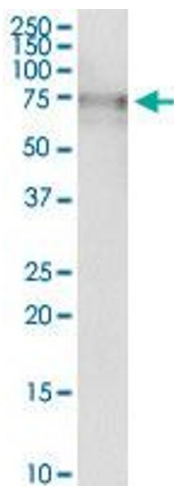
Restrictions: For Research Use only

Handling

Storage: -20 °C

Storage Comment: Store reagents of the antibody pair set at -20°C or lower. Please aliquot to avoid repeated freeze thaw cycle. Reagents should be returned to -20°C storage immediately after use.

Images



Immunoprecipitation

Image 1. Immunoprecipitation of ALPL transfected lysate using rabbit purified polyclonal anti-ALPL and Protein A Magnetic Bead (U0007), and immunoblotted with mouse purified polyclonal anti-ALPL.