



[Go to Product page](#)

Datasheet for ABIN2565349
anti-ARHGEF18 antibody (AA 1-89)

2 Images

Overview

Quantity:	100 µg
Target:	ARHGEF18
Binding Specificity:	AA 1-89
Reactivity:	Human
Host:	Mouse
Clonality:	Monoclonal
Conjugate:	This ARHGEF18 antibody is un-conjugated
Application:	ELISA, Western Blotting (WB)

Product Details

Purpose:	Mouse monoclonal antibody raised against a full-length recombinant ARHGEF18.
Immunogen:	ARHGEF18 (AAH08016.1, 1 a.a. ~ 89 a.a) full-length recombinant protein with GST tag. MW of the GST tag alone is 26 KDa.
Sequence:	MSQGMQRMHL ETLQQVDKWP LCGPLACSEL LQLTVRSLEG WRKEVLGSIK GAGTSQGGEI HPRSSSGGER AHVKPCSAPQ ALVGLGPG
Clone:	8H6
Isotype:	IgG2a
Cross-Reactivity:	Human
Characteristics:	Antibody Reactive Against Recombinant Protein.

Target Details

Target:	ARHGEF18
Alternative Name:	ARHGEF18 (ARHGEF18 Products)
Background:	Full Gene Name: rho/rac guanine nucleotide exchange factor (GEF) 18 Synonyms: KIAA0521,MGC15913,P114-RhoGEF
Gene ID:	23370
Pathways:	Neurotrophin Signaling Pathway

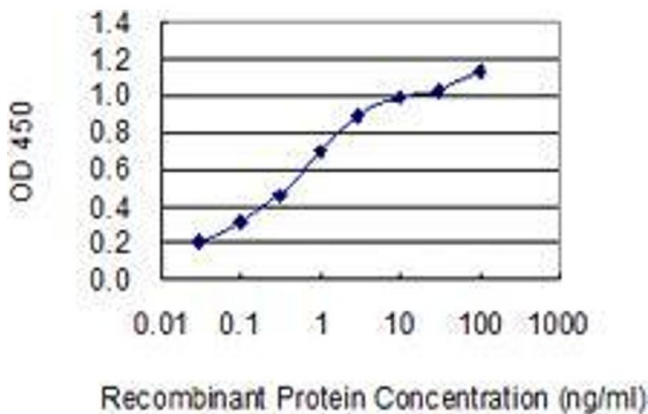
Application Details

Application Notes:	Optimal working dilution should be determined by the investigator.
Restrictions:	For Research Use only

Handling

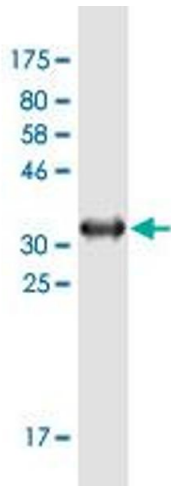
Buffer:	In 1x PBS, pH 7.4
Storage:	-20 °C
Storage Comment:	Store at -20°C or lower. Aliquot to avoid repeated freezing and thawing.

Images



ELISA

Image 1. Detection limit for recombinant GST tagged ARHGEF18 is 0.03 ng/ml as a capture antibody.



Western Blotting

Image 2. Western Blot detection against Immunogen (35.8 kDa).