



Datasheet for ABIN2565353  
**anti-ART4 antibody (AA 61-160)**



[Go to Product page](#)

3 Images

Overview

Quantity:	100 µg
Target:	ART4
Binding Specificity:	AA 61-160
Reactivity:	Human
Host:	Mouse
Clonality:	Monoclonal
Conjugate:	This ART4 antibody is un-conjugated
Application:	Western Blotting (WB), ELISA

Product Details

Purpose:	Mouse monoclonal antibody raised against a partial recombinant ART4.
Immunogen:	ART4 (NP_066549, 61 a.a. ~ 160 a.a) partial recombinant protein with GST tag. MW of the GST tag alone is 26 KDa.
Sequence:	SFDDQYQGCS KQVMEKLTQG DYFTKDIEAQ KNYFRMWQKA HLAWLNQGKV LPQNMTTTHA VAILFYTLNS NVHSDFTRAM ASVARTPQQY ERSFHFYKYLH
Clone:	2F8
Isotype:	IgG2a
Cross-Reactivity:	Human
Characteristics:	Antibody Reactive Against Recombinant Protein.

## Target Details

Target:	ART4
Alternative Name:	ART4 ( <a href="#">ART4 Products</a> )
Background:	Full Gene Name: ADP-ribosyltransferase 4 (Dombrock blood group) Synonyms: CD297,DO,DOK1
Gene ID:	420
NCBI Accession:	<a href="#">NM_021071</a>

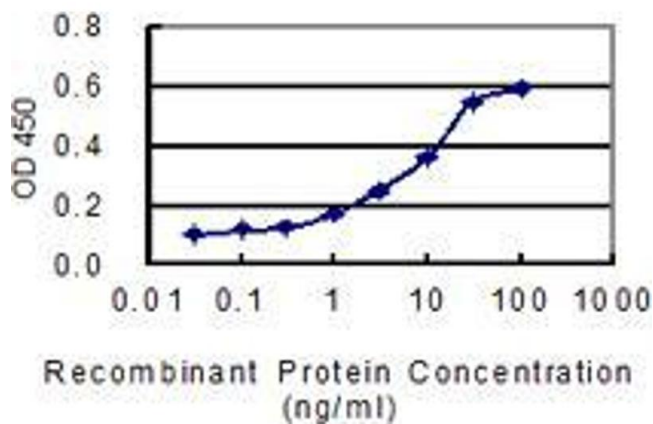
## Application Details

Application Notes:	Optimal working dilution should be determined by the investigator.
Restrictions:	For Research Use only

## Handling

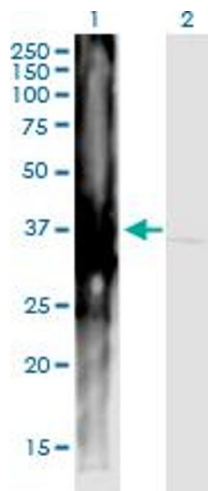
Buffer:	In 1x PBS, pH 7.4
Storage:	-20 °C
Storage Comment:	Store at -20°C or lower. Aliquot to avoid repeated freezing and thawing.

## Images



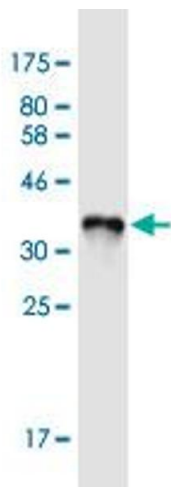
### ELISA

**Image 1.** Detection limit for recombinant GST tagged ART4 is 0.3 ng/ml as a capture antibody.



### Western Blotting

**Image 2.** Western Blot analysis of ART4 expression in transfected 293T cell line by ART4 monoclonal antibody (M01), clone 2F8. Lane 1: ART4 transfected lysate (Predicted MW: 35.9 kDa). Lane 2: Non-transfected lysate.



### Western Blotting

**Image 3.** Western Blot detection against Immunogen (36.74 kDa).