



Datasheet for ABIN2565391
anti-RSPH9 antibody (AA 1-276)



[Go to Product page](#)

2 Images

Overview

Quantity:	50 µg
Target:	RSPH9
Binding Specificity:	AA 1-276
Reactivity:	Human
Host:	Mouse
Clonality:	Polyclonal
Conjugate:	This RSPH9 antibody is un-conjugated
Application:	Western Blotting (WB), Immunofluorescence (IF)

Product Details

Purpose:	Mouse polyclonal antibody raised against a full-length human C6orf206 protein.
Immunogen:	C6orf206 (NP_689945, 1 a.a. ~ 276 a.a) full-length human protein.
Sequence:	MDADSLLSL ELASGSGQGL SPDRRASLLT SLMLVKRDYR YDRVLFWGRI LGLVADYYIA QGLSEDLAP RKTLYSLNCT EWSLLPPATE EMVAQSSVVK GRFMGDPSYE YEHTELQKVN EGEKVFEEEI VVQIKEETRL VSVIDQIDKA VAIIPRGALF KTPFGPTHVN RTFEGLSLSE AKKLSSYFHF REPVELKNKT LLEKADLDPS LDFMDSLEHD IPKGSWSIQM ERGNALVVLR SLLWPGLTFY HAPRTKNYGY VYVGTGEKNM DLPFML
Cross-Reactivity:	Human
Characteristics:	Antibody reactive against mammalian transfected lysate.

Target Details

Target:	RSPH9
Alternative Name:	C6orf206 (RSPH9 Products)
Background:	Full Gene Name: chromosome 6 open reading frame 206 Synonyms: FLJ30845,MRPS18AL1
Gene ID:	221421
NCBI Accession:	NM_152732

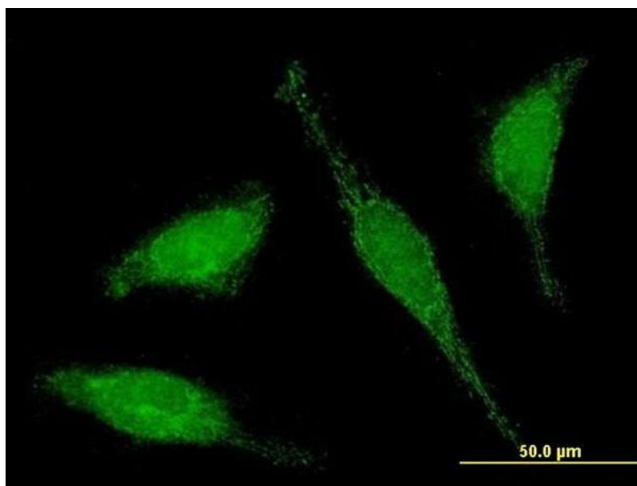
Application Details

Application Notes:	Optimal working dilution should be determined by the investigator.
Restrictions:	For Research Use only

Handling

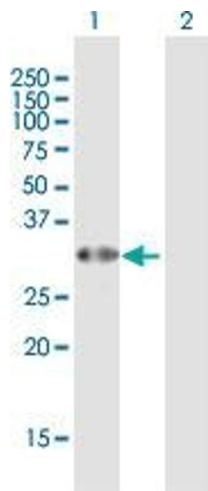
Buffer:	In 1x PBS, pH 7.4
Storage:	-20 °C
Storage Comment:	Store at -20°C or lower. Aliquot to avoid repeated freezing and thawing.

Images



Immunofluorescence

Image 1. Immunofluorescence of purified MaxPab antibody to C6orf206 on HeLa cell. [antibody concentration 10 ug/ml]



Western Blotting

Image 2. Western Blot analysis of C6orf206 expression in transfected 293T cell line by C6orf206 MaxPab polyclonal antibody.

Lane 1: C6orf206 transfected lysate(30.36 KDa).

Lane 2: Non-transfected lysate.