



[Go to Product page](#)

Datasheet for ABIN2565395
anti-C9orf169 antibody (AA 1-144)

2 Images

Overview

Quantity:	100 µg
Target:	C9orf169 (C9ORF169)
Binding Specificity:	AA 1-144
Reactivity:	Human
Host:	Mouse
Clonality:	Monoclonal
Conjugate:	This C9orf169 antibody is un-conjugated
Application:	Western Blotting (WB), ELISA

Product Details

Purpose:	Mouse monoclonal antibody raised against a full-length recombinant C9orf169.
Immunogen:	C9orf169 (NP_945352.1, 1 a.a. ~ 144 a.a) full-length recombinant protein with GST tag. MW of the GST tag alone is 26 KDa.
Sequence:	MDPQEMVVKN PYAHISIPRA HLRPDLGQQL EVASTCSSSS EMQPLPVGPC APEPTHLLQP TEVPGPKGAK GNQGAAPIQN QQAWQQPGNP YSSSRQAGL TYAGPPPVGR GDDIAHHCCC CPCCHCCHCP PFCRCHSCCC CVIS
Clone:	4E4
Isotype:	IgG2a
Cross-Reactivity:	Human
Characteristics:	Antibody Reactive Against Recombinant Protein.

Target Details

Target:	C9orf169 (C9ORF169)
Alternative Name:	C9orf169 (C9ORF169 Products)
Background:	Full Gene Name: chromosome 9 open reading frame 169 Synonyms: MGC59937
Gene ID:	375791
NCBI Accession:	NM_199001

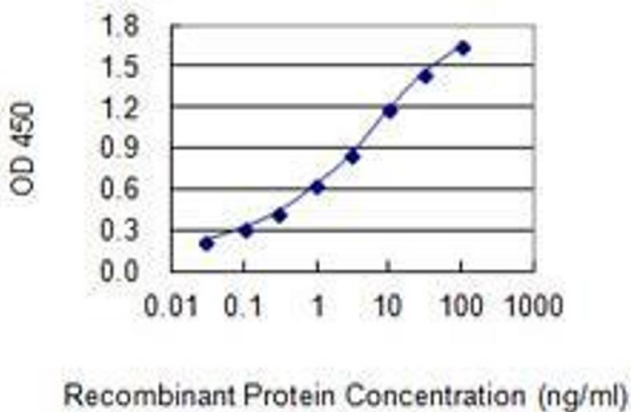
Application Details

Application Notes:	Optimal working dilution should be determined by the investigator.
Restrictions:	For Research Use only

Handling

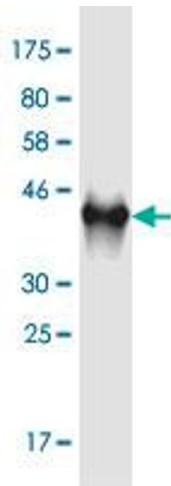
Buffer:	In 1x PBS, pH 7.4
Storage:	-20 °C
Storage Comment:	Store at -20°C or lower. Aliquot to avoid repeated freezing and thawing.

Images



ELISA

Image 1. Detection limit for recombinant GST tagged C9orf169 is 0.03 ng/ml as a capture antibody.



Western Blotting

Image 2. Western Blot detection against Immunogen (41.7 kDa).