



[Go to Product page](#)

Datasheet for ABIN2565401

anti-Cathelicidin antibody (AA 31-170)

1 Image

Overview

Quantity:	50 µg
Target:	Cathelicidin (CAMP)
Binding Specificity:	AA 31-170
Reactivity:	Human
Host:	Mouse
Clonality:	Polyclonal
Conjugate:	This Cathelicidin antibody is un-conjugated
Application:	Western Blotting (WB)

Product Details

Purpose:	Mouse polyclonal antibody raised against a full-length human CAMP protein.
Immunogen:	CAMP (AAH55089, 31 a.a. ~ 170 a.a) full-length human protein.
Sequence:	QVLSYKEAVL RAIDGINQRS SDANLYRLLD LDP RP TMDGD PDTPKVSFT VKETVCPRTT QQSPEDCDFK KDGLVKRCMG TVTLNQARGS FDISCDKDNK RFALLGDFFR KSKEKIGKEF KRIVQRIKDF LRNLVPRTES
Cross-Reactivity:	Human
Characteristics:	Antibody reactive against mammalian transfected lysate.

Target Details

Target:	Cathelicidin (CAMP)
---------	---------------------

Target Details

Alternative Name:	CAMP (CAMP Products)
Target Type:	Chemical
Background:	Full Gene Name: cathelicidin antimicrobial peptide Synonyms: CAP18,CRAMP,FALL-39,FALL39,HSD26,LL37
Gene ID:	820
Pathways:	Cellular Response to Molecule of Bacterial Origin

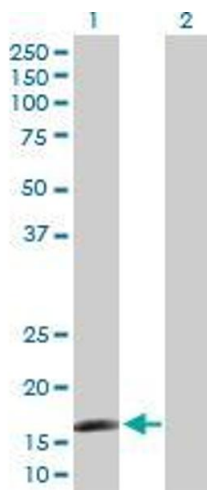
Application Details

Application Notes:	Optimal working dilution should be determined by the investigator.
Restrictions:	For Research Use only

Handling

Buffer:	In 1x PBS, pH 7.4
Storage:	-20 °C
Storage Comment:	Store at -20°C or lower. Aliquot to avoid repeated freezing and thawing.

Images



Western Blotting

Image 1. Western Blot analysis of CAMP expression in transfected 293T cell line by CAMP MaxPab polyclonal antibody.

Lane 1: CAMP transfected lysate(18.81 KDa).

Lane 2: Non-transfected lysate.