



[Go to Product page](#)

Datasheet for ABIN2565416
anti-CCNJL antibody (AA 1-121)

2 Images

Overview

Quantity:	100 µg
Target:	CCNJL
Binding Specificity:	AA 1-121
Reactivity:	Human
Host:	Mouse
Clonality:	Monoclonal
Conjugate:	This CCNJL antibody is un-conjugated
Application:	Western Blotting (WB), ELISA

Product Details

Purpose:	Mouse monoclonal antibody raised against a full-length recombinant CCNJL.
Immunogen:	CCNJL (AAH13353.1, 1 a.a. ~ 121 a.a) full-length recombinant protein with GST tag. MW of the GST tag alone is 26 KDa.
Sequence:	MVPGTPPTPT QVLFQPPAYP ALGQPATTLA QFQTPVQDLC LAYRDSLQAH RSGSLLSGST GSSLHTPYQP LQPLDMCPVP VPASLSMHMA IAAEPRHCLA TTYGSSYFSG SHMFPTGCFD R
Clone:	4E10
Isotype:	IgG1
Cross-Reactivity:	Human
Characteristics:	Antibody Reactive Against Recombinant Protein.

Target Details

Target:	CCNJL
Alternative Name:	CCNJL (CCNJL Products)
Background:	Full Gene Name: cyclin J-like Synonyms: FLJ14166
Gene ID:	79616

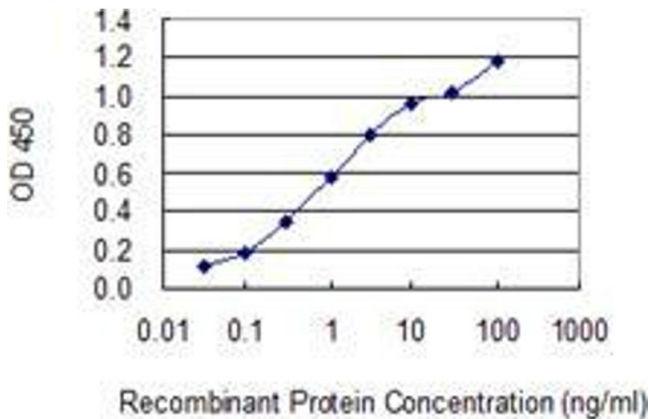
Application Details

Application Notes:	Optimal working dilution should be determined by the investigator.
Restrictions:	For Research Use only

Handling

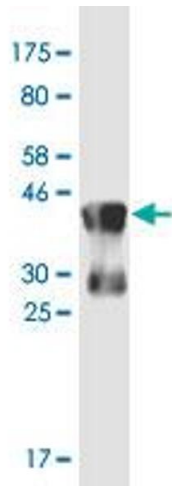
Buffer:	In 1x PBS, pH 7.4
Storage:	-20 °C
Storage Comment:	Store at -20°C or lower. Aliquot to avoid repeated freezing and thawing.

Images



ELISA

Image 1. Detection limit for recombinant GST tagged CCNJL is 0.03 ng/ml as a capture antibody.



Western Blotting

Image 2. Western Blot detection against Immunogen (39.3 kDa).