



[Go to Product page](#)

Datasheet for ABIN2565439

anti-Adipsin antibody (AA 154-253)

2 Images

Overview

Quantity:	100 µg
Target:	Adipsin (CFD)
Binding Specificity:	AA 154-253
Reactivity:	Human
Host:	Mouse
Clonality:	Monoclonal
Conjugate:	This Adipsin antibody is un-conjugated
Application:	Western Blotting (WB), ELISA

Product Details

Purpose:	Mouse monoclonal antibody raised against a partial recombinant CFD.
Immunogen:	CFD (NP_001919.2, 154 a.a. ~ 253 a.a) partial recombinant protein with GST tag. MW of the GST tag alone is 26 KDa.
Sequence:	GIVNHAGRRP DSLQHVLLPV LDRATCNRRT HHDGAITERL MCAESNRRDS CKGDSGGPLV CGGVLEGVVT SGRVCGNRK KPGIYTRVAS YAAWIDSVLA
Clone:	5F20
Isotype:	IgG2a
Cross-Reactivity:	Human
Characteristics:	Antibody Reactive Against Recombinant Protein.

Target Details

Target:	Adipsin (CFD)
Alternative Name:	CFD (CFD Products)
Background:	Full Gene Name: complement factor D (adipsin) Synonyms: ADIPSIN,ADN,DF,PFD
Gene ID:	1675
NCBI Accession:	NM_001928
Pathways:	Complement System

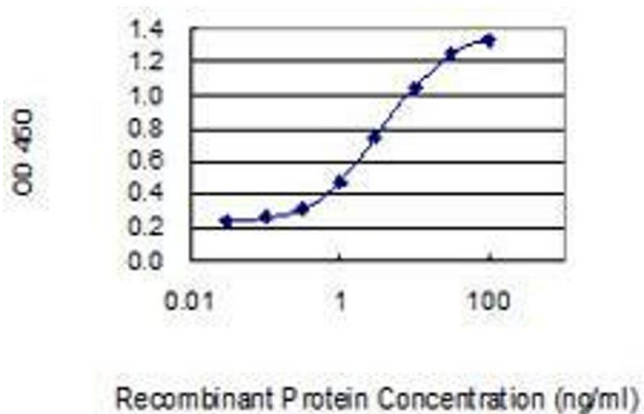
Application Details

Application Notes:	Optimal working dilution should be determined by the investigator.
Restrictions:	For Research Use only

Handling

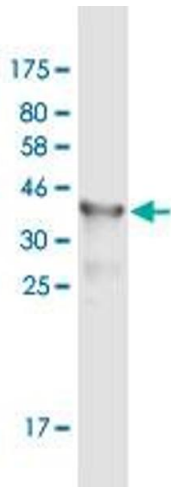
Buffer:	In 1x PBS, pH 7.4
Storage:	-20 °C
Storage Comment:	Store at -20°C or lower. Aliquot to avoid repeated freezing and thawing.

Images



ELISA

Image 1. Detection limit for recombinant GST tagged CFD is 0.03 ng/ml as a capture antibody.



Western Blotting

Image 2. Western Blot detection against Immunogen (36.63 kDa).