



Datasheet for ABIN2565441
anti-CHL1 antibody (AA 26-135)



[Go to Product page](#)

2 Images

Overview

Quantity:	100 µg
Target:	CHL1
Binding Specificity:	AA 26-135
Reactivity:	Human
Host:	Mouse
Clonality:	Monoclonal
Application:	Western Blotting (WB), ELISA

Product Details

Purpose:	Mouse monoclonal antibody raised against a partial recombinant CHL1.
Immunogen:	CHL1 (NP_006605, 26 a.a. ~ 135 a.a) partial recombinant protein with GST tag. MW of the GST tag alone is 26 KDa.
Sequence:	EIPSSVQQVP TIIKQSKVQV AAFPDEYFQI ECEAKGNPEP TFSWTKDGNP FYFTDHR IIP SNNSGTFRIP NEG HISHFQG KYRCFASNKL G IAMSEEIEF IVPSVPKFPK
Clone:	2H5
Isotype:	IgG2a kappa
Cross-Reactivity:	Human

Target Details

Target:	CHL1
---------	------

Target Details

Alternative Name:	CHL1 (CHL1 Products)
Background:	Full Gene Name: cell adhesion molecule with homology to L1CAM (close homolog of L1) Synonyms: CALL,FLJ44930,L1CAM2,MGC132578
Gene ID:	10752
NCBI Accession:	NP_006605 , NM_006614

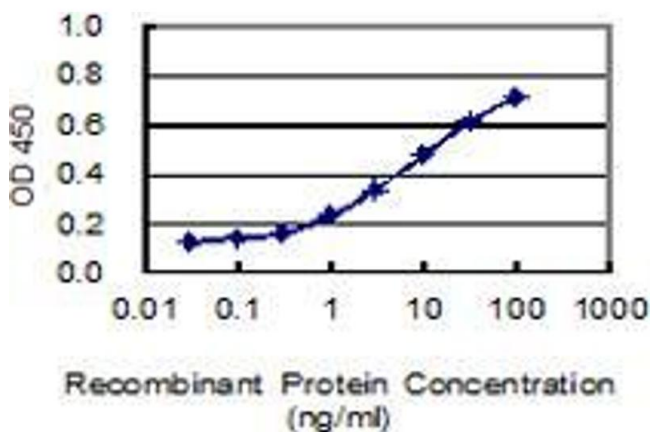
Application Details

Application Notes:	Optimal working dilution should be determined by the investigator.
Comment:	Product Quality tested by: Antibody Reactive Against Recombinant Protein.
Restrictions:	For Research Use only

Handling

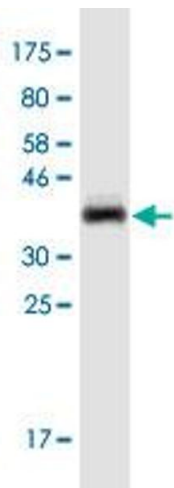
Buffer:	In 1x PBS, pH 7.4
Storage:	-20 °C
Storage Comment:	Store at -20°C or lower. Aliquot to avoid repeated freezing and thawing.

Images



ELISA

Image 1. Detection limit for recombinant GST tagged CHL1 is 0.3 ng/ml as a capture antibody.



Western Blotting

Image 2. Western Blot detection against Immunogen (37.84 kDa).