



[Go to Product page](#)

Datasheet for ABIN2565444
anti-Claudin 12 antibody (AA 1-244)

1 Image

Overview

Quantity:	50 µg
Target:	Claudin 12 (CLDN12)
Binding Specificity:	AA 1-244
Reactivity:	Human
Host:	Mouse
Clonality:	Polyclonal
Conjugate:	This Claudin 12 antibody is un-conjugated
Application:	Western Blotting (WB)

Product Details

Purpose:	Mouse polyclonal antibody raised against a full-length human CLDN12 protein.
Immunogen:	CLDN12 (AAH36754.1, 1 a.a. ~ 244 a.a) full-length human protein.
Sequence:	MGCRDVHAAT VLSFLCGIAS VAGLFAGTLL PNWRKLRIT FNRNEKNLTV YTGLWVKCAR YDGSSDCLMY DTTWYSSVDQ LDLRVLQFAL PLSMLIAMGA LLLCLIGMCN TAFRSSVPNI KLAKCLVNSA GCHLVAGLLF FLAGTVSLSP SIWVIFYNIH LNKKFEPVFS FDYAVYVTIA SAGGLFMTSL ILFIWYCTCK SLPSPFWQPL YSHPPSMHTY SQPYSARSRL SAIEDIPVV SHTT
Cross-Reactivity:	Human
Characteristics:	Antibody reactive against mammalian transfected lysate.

Target Details

Target:	Claudin 12 (CLDN12)
---------	---------------------

Target Details

Alternative Name: CLDN12 ([CLDN12 Products](#))

Background: Full Gene Name: claudin 12
Synonyms:

Gene ID: 9069

Pathways: [Cell-Cell Junction Organization](#)

Application Details

Application Notes: Optimal working dilution should be determined by the investigator.

Restrictions: For Research Use only

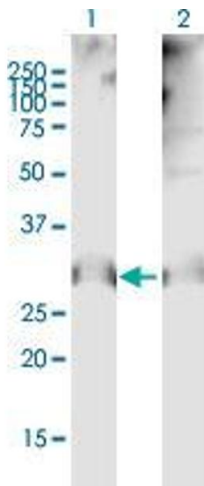
Handling

Buffer: In 1x PBS, pH 7.4

Storage: -20 °C

Storage Comment: Store at -20°C or lower. Aliquot to avoid repeated freezing and thawing.

Images



Western Blotting

Image 1. Western Blot analysis of CLDN12 expression in transfected 293T cell line by CLDN12 MaxPab polyclonal antibody.

Lane 1: CLDN12 transfected lysate(11.00 KDa).

Lane 2: Non-transfected lysate.