



[Go to Product page](#)

Datasheet for ABIN2565456
anti-COPE antibody (AA 1-308)

2 Images

Overview

Quantity:	50 µg
Target:	COPE
Binding Specificity:	AA 1-308
Reactivity:	Human
Host:	Mouse
Clonality:	Polyclonal
Conjugate:	This COPE antibody is un-conjugated
Application:	Western Blotting (WB)

Product Details

Purpose:	Mouse polyclonal antibody raised against a full-length human COPE protein.
Immunogen:	COPE (NP_009194.2, 1 a.a. ~ 308 a.a) full-length human protein.
Sequence:	MAPPAPGPAS GSGSEVDLDF DVKNAFYIGS YQQCINEAQR VKLSSPERDV ERDVFLYRAY LAQRKFGVVL DEIKPSSAPE LQAVRMFADY LAHESRRDSI VAELDREMSR SVDVTNTTFL LMAASIYLDH QNPDAALRAL HQGDSLECTA MTVQILLKLD RLDLARKELK RMQDLDEDAT LTQLATAWVS LATGGEKLQD AYYIFQEMAD KCSPTLLLLN GQAACHMAQG RWEAAEGLLQ EALDKDSGYP ETLVNLIVLS QHLGKPPEVT NRYLSQLKDA HRSHPIKEY QAKENDFDRL VLQYAPSA
Cross-Reactivity:	Human
Characteristics:	Antibody reactive against mammalian transfected lysate.

Target Details

Target:	COPE
Alternative Name:	COPE (COPE Products)
Background:	Full Gene Name: coatomer protein complex, subunit epsilon Synonyms: FLJ13241,epsilon-COP
Gene ID:	11316
NCBI Accession:	NM_007263

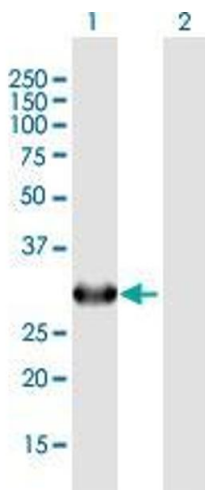
Application Details

Application Notes:	Optimal working dilution should be determined by the investigator.
Restrictions:	For Research Use only

Handling

Buffer:	In 1x PBS, pH 7.4
Storage:	-20 °C
Storage Comment:	Store at -20°C or lower. Aliquot to avoid repeated freezing and thawing.

Images

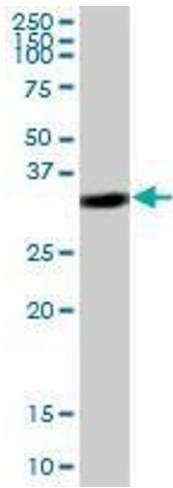


Western Blotting

Image 1. Western Blot analysis of COPE expression in transfected 293T cell line by COPE MaxPab polyclonal antibody.

Lane 1: COPE transfected lysate(33.88 kDa).

Lane 2: Non-transfected lysate.



Western Blotting

Image 2. COPE MaxPab polyclonal antibody. Western Blot analysis of COPE expression in human liver.